



SZABO SCANDIC

Part of Europa Biosite

Produktinformation



Forschungsprodukte & Biochemikalien



Zellkultur & Verbrauchsmaterial



Diagnostik & molekulare Diagnostik



Laborgeräte & Service

Weitere Information auf den folgenden Seiten!
See the following pages for more information!



Lieferung & Zahlungsart

siehe unsere [Liefer- und Versandbedingungen](#)

Zuschläge

- Mindermengenzuschlag
- Trockeneiszuschlag
- Gefahrgutzuschlag
- Expressversand

SZABO-SCANDIC HandelsgmbH

Quellenstraße 110, A-1100 Wien

T. +43(0)1 489 3961-0

F. +43(0)1 489 3961-7

mail@szabo-scandic.com

www.szabo-scandic.com

[linkedin.com/company/szaboscandic](https://www.linkedin.com/company/szaboscandic) 

SMC4 Antibody

Rabbit Polyclonal

Antigen Affinity Purified	RefSeq ID	NP_005487.2
Catalog No. A300-064A-T	Uniprot ID	Q9NTJ3
Lot No. 2	GeneID	10051

APPLICATIONS	WB, IP, ICC
SPECIES REACTIVITY	Human
AMOUNT	10 µl
CONCENTRATION	1000 µg/ml
STORAGE/SHELF LIFE	2 – 8°C / 1 year from date of receipt
PHYSICAL STATE	Liquid
BUFFER	Tris-citrate/phosphate buffer, pH 7 to 8 containing 0.09% Sodium Azide
ISOTYPE	IgG
ORIGIN	USA
PRODUCTION PROCEDURES	Antibody was affinity purified using an epitope specific to SMC4 immobilized on solid support.

The epitope recognized by A300-064A maps to a region between residue 1225 and the C-terminus (residue 1288) of human Structural Maintenance of Chromosomes 4 using the numbering given in entry NP_005487.2 (GeneID 10051).

Immunoglobulin concentration was determined using Beer's Law where 1 mg/mL IgG has an A280 of 1.4.

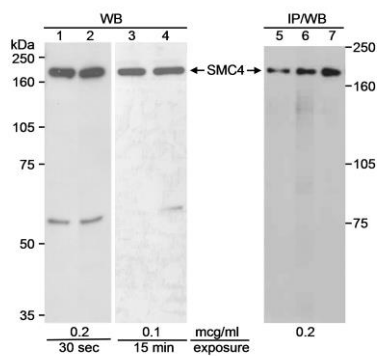
APPLICATIONS Centrifuge tube to remove product from lid. Optimal working dilutions should be determined experimentally by the investigator. Prepare working dilution immediately before use.

Western Blot	1:1000 – 1:10,000
Immunoprecipitation	6 µg/mg lysate
Immunocytochemistry	1:200 – 1:400

ADDITIONAL INFO <https://www.fortislife.com/p/A300-064A-T>

Use the link above to view SDS, a current list of citations, and other product specific information.

This document certifies that this product has met all of the quality control standards defined by Bethyl Laboratories, Inc.
Michael Spencer, PhD Date: January 31, 2024



Detection of human SMC4 by western blot and immunoprecipitation. *Samples:* Whole cell lysate (90 μ g for WB; 0.5 mg for IP/WB) from HEK293T cells (lanes 1, 3 and 5), normal human lymphoblasts (lane 2) or SMC4 transfected 239T cells (lanes 4, 6 and 7) separated on an 8% SDS-PAGE gel. *Antibodies:* Affinity purified rabbit anti-SMC4 A300-064A used at 0.2 or 0.1 μ g/ml for WB and 5 μ g for IP. *Detection:* Chemiluminescence with the indicated exposure times.