



# SZABO SCANDIC

Part of Europa Biosite

## Produktinformation



Forschungsprodukte & Biochemikalien



Zellkultur & Verbrauchsmaterial



Diagnostik & molekulare Diagnostik



Laborgeräte & Service

Weitere Information auf den folgenden Seiten!  
See the following pages for more information!



### Lieferung & Zahlungsart

siehe unsere [Liefer- und Versandbedingungen](#)

### Zuschläge

- Mindermengenzuschlag
- Trockeneiszuschlag
- Gefahrgutzuschlag
- Expressversand

### SZABO-SCANDIC HandelsgmbH

Quellenstraße 110, A-1100 Wien

T. +43(0)1 489 3961-0

F. +43(0)1 489 3961-7

[mail@szabo-scandic.com](mailto:mail@szabo-scandic.com)

[www.szabo-scandic.com](http://www.szabo-scandic.com)

[linkedin.com/company/szaboscandic](https://www.linkedin.com/company/szaboscandic) 

# XRCC1 Antibody

Rabbit Polyclonal

Antigen Affinity Purified      Protein ID    NP\_006288.1  
Catalog No.    A300-065A-T      GeneID      7515  
Lot No.      A300-065A-T-2



**APPLICATIONS**      WB  
**SPECIES REACTIVITY**      Human  
**PRESUMED REACTIVITY**      Based on 100% sequence identity, this antibody is predicted to react with Mouse and Rat  
**AMOUNT**      10 µl  
**CONCENTRATION**      1000 µg/ml  
**STORAGE/SHELF LIFE**      2 - 8° C / 1 year from date of receipt  
**PHYSICAL STATE**      Liquid  
**BUFFER**      Tris-citrate/phosphate buffer, pH 7 to 8 containing 0.09% Sodium Azide  
**ISOTYPE**      IgG  
**ORIGIN**      USA  
**PRODUCTION PROCEDURES**      Antibody was affinity purified using an epitope specific to XRCC1 immobilized on solid support.

The epitope recognized by A300-065A-T maps to a region between residue 600 and the C-terminus (residue 633) of human X-ray Repair Cross Complementing protein 1 using the numbering given in entry NP\_006288.1 (GeneID 7515).

Immunoglobulin concentration was determined by extinction coefficient: absorbance at 280 nm of 1.4 equals 1.0 mg of IgG.

**APPLICATIONS**      Centrifuge tube to remove product from lid. Optimal working dilutions should be determined experimentally by the investigator. Prepare working dilution immediately before use.

Western Blot      1:1,000 - 1:10,000

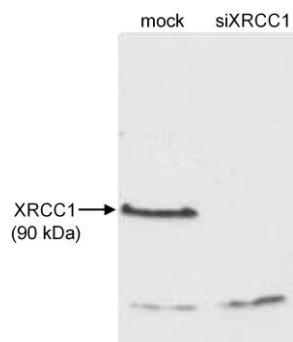
**APPLICATION NOTES**      Western blot of immunoprecipitates performed using Normal Pig Serum (Cat. No. S100-020), Goat anti-Rabbit Light Chain HRP Conjugate (Cat. No. A120-113P) and 4-8% SDS-PAGE (link to IP-western blot protocol in Additional Info section below).

Western blot of lysates performed using standard western blot reagents and 4-8% SDS-PAGE.

**ADDITIONAL INFO**      <https://www.bethyl.com/product/A300-065A-T>

Use the link above to view SDS, a current list of citations, and other product specific information. IP-western blot protocol: [https://www.bethyl.com/content/protocol\\_IP\\_WB](https://www.bethyl.com/content/protocol_IP_WB)

This document certifies that this product has met all of the quality control standards defined by Bethyl Laboratories, Inc.  
Eric McIntush, PhD | Chief Scientific Officer      Date: June 21, 2019



**Detection of human XRCC1 by western blot.** *Samples:* Whole cell extract (50 µg) from mock treated or siRNA treated HeLa cells. *Antibody:* Affinity purified rabbit anti-XRCC1 A300-065A-T used for WB at 1 µg/ml. *Detection:* Chemiluminescence.