



# SZABO SCANDIC

Part of Europa Biosite

## Produktinformation



Forschungsprodukte & Biochemikalien



Zellkultur & Verbrauchsmaterial



Diagnostik & molekulare Diagnostik



Laborgeräte & Service

Weitere Information auf den folgenden Seiten!  
See the following pages for more information!



### Lieferung & Zahlungsart

siehe unsere [Liefer- und Versandbedingungen](#)

### Zuschläge

- Mindermengenzuschlag
- Trockeneiszuschlag
- Gefahrgutzuschlag
- Expressversand

### SZABO-SCANDIC HandelsgmbH

Quellenstraße 110, A-1100 Wien

T. +43(0)1 489 3961-0

F. +43(0)1 489 3961-7

[mail@szabo-scandic.com](mailto:mail@szabo-scandic.com)

[www.szabo-scandic.com](http://www.szabo-scandic.com)

[linkedin.com/company/szaboscandic](https://www.linkedin.com/company/szaboscandic) 

# Diaphanous 1 Antibody

Rabbit Polyclonal

Antigen Affinity Purified

Protein ID NP\_005210.1

Catalog No. A300-078A

GeneID 1729

Lot No. A300-078A-1



<b>APPLICATIONS</b>	WB, IHC
<b>SPECIES REACTIVITY</b>	Human
<b>AMOUNT</b>	100 µl
<b>CONCENTRATION</b>	1000 µg/ml
<b>STORAGE/SHELF LIFE</b>	2 - 8° C / 1 year from date of receipt
<b>PHYSICAL STATE</b>	Liquid
<b>BUFFER</b>	Tris-citrate/phosphate buffer, pH 7 to 8 containing 0.09% Sodium Azide
<b>ISOTYPE</b>	IgG
<b>ORIGIN</b>	USA
<b>PRODUCTION PROCEDURES</b>	Antibody was affinity purified using an epitope specific to Diaphanous 1 immobilized on solid support.

The epitope recognized by A300-078A maps to a region between residues 1200 and the C-terminus (residue 1248) of human Diaphanous Homolog 1 using the numbering given in entry NP\_005210.1 (GeneID 1729).

Immunoglobulin concentration was determined by extinction coefficient: absorbance at 280 nm of 1.4 equals 1.0 mg of IgG.

**APPLICATIONS** Centrifuge tube to remove product from lid. Optimal working dilutions should be determined experimentally by the investigator. Prepare working dilution immediately before use.

Western Blot 1:5,000 – 1:15,000

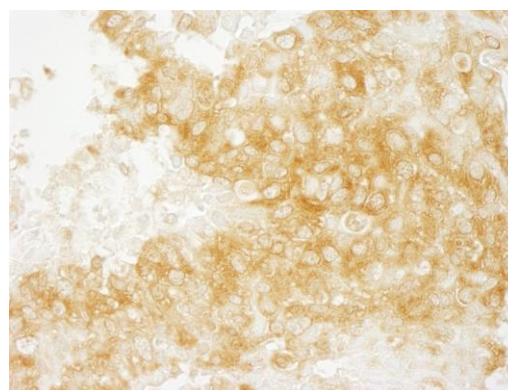
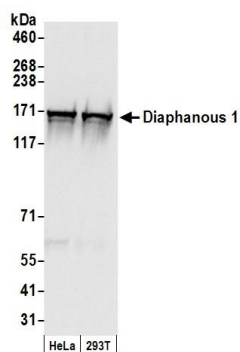
Immunohistochemistry 1:1,000 – 1:5,000. Epitope retrieval is not recommended.

**APPLICATION NOTES** Western blot of lysates performed using standard western blot reagents and 4-8% SDS-PAGE.

**IHC HUMAN CONTROLS** Breast Carcinoma, Colon Carcinoma, Ovarian Carcinoma

**ADDITIONAL INFO** <https://www.bethyl.com/product/A300-078A>  
Use the link above to view SDS, a current list of citations, and other product specific information.

This document certifies that this product has met all of the quality control standards defined by Bethyl Laboratories, Inc.  
Eric McIntush, PhD | Chief Scientific Officer Date: June 21, 2019

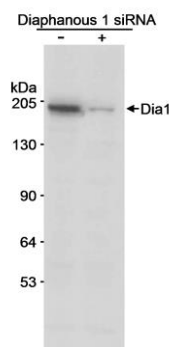


#### Detection of human Diaphanous 1 by western blot.

*Samples:* Whole cell lysate (50 µg) from HeLa and HEK293T cells prepared using NETN lysis buffer. *Antibody:* Affinity purified rabbit anti-Diaphanous 1 antibody A300-078A (lot A300-078A-1) used for WB at 0.66 µg/ml. *Detection:* Chemiluminescence with an exposure time of 1 second.

#### Detection of human Diaphanous by immunohistochemistry.

*Sample:* FFPE section of human breast carcinoma. *Antibody:* Affinity purified rabbit anti-Diaphanous (Cat. No. A300-078A) used at a dilution of 1:1,000 (1 µg/ml). *Detection:* DAB



#### Detection of human Diaphanous 1 by western blot.

*Samples:* Whole cell lysate (50 µg/lane) from untreated or siRNA treated HEK293T cells. *Antibody:* Affinity purified rabbit anti-Diaphanous 1 antibody A300-078A used at 0.1 µg/ml. *Detection:* Chemiluminescence with 10 second exposure.