



SZABO SCANDIC

Part of Europa Biosite

Produktinformation



Forschungsprodukte & Biochemikalien



Zellkultur & Verbrauchsmaterial



Diagnostik & molekulare Diagnostik



Laborgeräte & Service

Weitere Information auf den folgenden Seiten!
See the following pages for more information!



Lieferung & Zahlungsart

siehe unsere [Liefer- und Versandbedingungen](#)

Zuschläge

- Mindermengenzuschlag
- Trockeneiszuschlag
- Gefahrgutzuschlag
- Expressversand

SZABO-SCANDIC HandelsgmbH

Quellenstraße 110, A-1100 Wien

T. +43(0)1 489 3961-0

F. +43(0)1 489 3961-7

mail@szabo-scandic.com

www.szabo-scandic.com

[linkedin.com/company/szaboscandic](https://www.linkedin.com/company/szaboscandic) 

Diaphanous 2 Antibody

Rabbit Polyclonal

Antigen Affinity Purified

Protein ID NP_006720.1

Catalog No. A300-079A-T

GeneID 1730

Lot No. A300-079A-T-2



APPLICATIONS	WB
SPECIES REACTIVITY	Human
AMOUNT	20 µl (2 blots)
CONCENTRATION	100 µg/ml
STORAGE/SHELF LIFE	2 – 8° C / 1 year from date of receipt
PHYSICAL STATE	Liquid
BUFFER	Tris-buffered Saline containing 0.1% BSA and 0.09% Sodium Azide
ISOTYPE	IgG
ORIGIN	USA
PRODUCTION PROCEDURES	Antibody was affinity purified using an epitope specific to Diaphanous 2 immobilized on solid support.

The epitope recognized by A300-079A-T maps to a region between residues 50 and 100 of human Diaphanous Homolog 2 using the numbering given in entry NP_006720.1 (GeneID 1730).

APPLICATIONS Centrifuge tube to remove product from lid. Optimal working dilutions should be determined experimentally by the investigator. Prepare working dilution immediately before use.

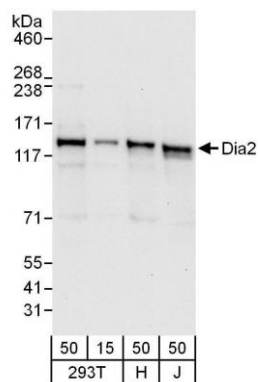
Western Blot 1:1000

APPLICATION NOTES Western blot of lysates performed using standard western blot reagents and 4-8% SDS-PAGE.

ADDITIONAL INFO <https://www.bethyl.com/product/A300-079A-T>

Use the link above to view SDS, a current list of citations, and other product specific information.

This document certifies that this product has met all of the quality control standards defined by Bethyl Laboratories, Inc.
Eric McIntush, PhD | Chief Scientific Officer Date: July 16, 2019

**Detection of human Diaphanous 2 by western blot.**

Samples: Whole cell lysate from HEK293T (15 and 50 µg), HeLa (H; 50 µg) and Jurkat (J; 50 µg) cells. *Antibody:* Affinity purified rabbit anti-Diaphanous 2 antibody A300-079A-T used at 1:1000. *Detection:* Chemiluminescence with an exposure time of 10 seconds.