



SZABO SCANDIC

Part of Europa Biosite

Produktinformation



Forschungsprodukte & Biochemikalien



Zellkultur & Verbrauchsmaterial



Diagnostik & molekulare Diagnostik



Laborgeräte & Service

Weitere Information auf den folgenden Seiten!
See the following pages for more information!



Lieferung & Zahlungsart

siehe unsere [Liefer- und Versandbedingungen](#)

Zuschläge

- Mindermengenzuschlag
- Trockeneiszuschlag
- Gefahrgutzuschlag
- Expressversand

SZABO-SCANDIC HandelsgmbH

Quellenstraße 110, A-1100 Wien

T. +43(0)1 489 3961-0

F. +43(0)1 489 3961-7

mail@szabo-scandic.com

www.szabo-scandic.com

[linkedin.com/company/szaboscandic](https://www.linkedin.com/company/szaboscandic) 

Rad21 Antibody

Rabbit Polyclonal

| | | |
|---------------------------|------------|-------------|
| Antigen Affinity Purified | RefSeq ID | NP_006256.1 |
| Catalog No. A300-080A | Uniprot ID | O60216 |
| Lot No. 11 | GeneID | 5885 |

| | |
|------------------------------|---|
| APPLICATIONS | WB, IP |
| SPECIES REACTIVITY | Human, Mouse |
| PRESUMED REACTIVITY | Based on 100% sequence identity, this antibody is predicted to react with Bovine |
| AMOUNT | 100 µl |
| CONCENTRATION | 1000 µg/ml |
| STORAGE/SHELF LIFE | 2 – 8°C / 1 year from date of receipt |
| PHYSICAL STATE | Liquid |
| BUFFER | Tris-citrate/phosphate buffer, pH 7 to 8 containing 0.09% Sodium Azide |
| ISOTYPE | IgG |
| ORIGIN | USA |
| PRODUCTION PROCEDURES | Antibody was affinity purified using an epitope specific to Rad21 immobilized on solid support. |

The epitope recognized by A300-080A maps to a region between residue 575 and the C-terminus (residue 631) human Rad21 homolog using the numbering given in entry NP_006256.1 (GeneID 5885).

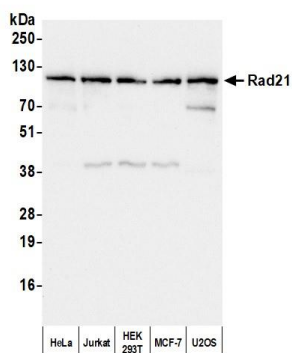
Immunoglobulin concentration was determined by extinction coefficient: absorbance at 280 nm of 1.4 equals 1.0 mg of IgG.

APPLICATIONS Centrifuge tube to remove product from lid. Optimal working dilutions should be determined experimentally by the investigator. Prepare working dilution immediately before use.

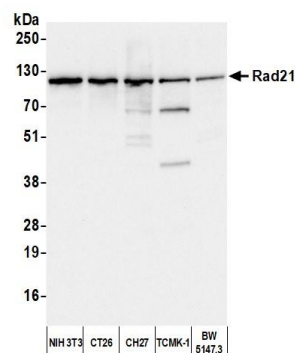
| | |
|---------------------|---------------------|
| Western Blot | 1:10,000 – 1:25,000 |
| Immunoprecipitation | 2 – 10 µg/mg lysate |

ADDITIONAL INFO <https://www.fortislife.com/p/A300-080A>
Use the link above to view SDS, a current list of citations, and other product specific information.

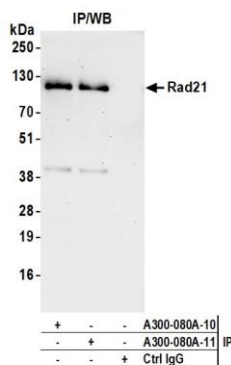
This document certifies that this product has met all of the quality control standards defined by Bethyl Laboratories, Inc.
Michael Spencer, PhD Date: April 21, 2023



Detection of human Rad21 by western blot. *Samples:* Whole cell lysate (10 μ g) from HeLa, Jurkat, HEK293T, MCF-7, and U2OS cells prepared using NETN lysis buffer. *Antibody:* Affinity purified rabbit anti-Rad21 antibody (A300-080A lot 11) used for WB at 0.04 μ g/ml. *Detection:* Chemiluminescence with an exposure time of 30 seconds.



Detection of mouse Rad21 by western blot. *Samples:* Whole cell lysate (10 μ g) from NIH 3T3, CT26, CH27, TCMK-1, and BW5147.3 cells prepared using NETN lysis buffer. *Antibody:* Affinity purified rabbit anti-Rad21 antibody (A300-080A lot 11) used for WB at 0.04 μ g/ml. *Detection:* Chemiluminescence with an exposure time of 30 seconds.



Detection of human Rad21 by western blot of immunoprecipitates. *Samples:* Whole cell lysate (1.0 mg per IP reaction; 5% of IP loaded) from HEK293T cells prepared using NETN lysis buffer. *Antibodies:* Affinity purified rabbit anti-Rad21 antibody (A300-080A lot 11) used for IP at 6 μ g per reaction. Rad21 was also immunoprecipitated by a previous lot of this antibody (A300-080A lot 10). For blotting immunoprecipitated Rad21, A300-080A was used at 0.04 μ g/ml. *Detection:* Chemiluminescence with an exposure time of 75 seconds.