



SZABO SCANDIC

Part of Europa Biosite

Produktinformation



Forschungsprodukte & Biochemikalien



Zellkultur & Verbrauchsmaterial



Diagnostik & molekulare Diagnostik



Laborgeräte & Service

Weitere Information auf den folgenden Seiten!
See the following pages for more information!



Lieferung & Zahlungsart

siehe unsere [Liefer- und Versandbedingungen](#)

Zuschläge

- Mindermengenzuschlag
- Trockeneiszuschlag
- Gefahrgutzuschlag
- Expressversand

SZABO-SCANDIC HandelsgmbH

Quellenstraße 110, A-1100 Wien

T. +43(0)1 489 3961-0

F. +43(0)1 489 3961-7

mail@szabo-scandic.com

www.szabo-scandic.com

[linkedin.com/company/szaboscandic](https://www.linkedin.com/company/szaboscandic) 

gamma-H2AX Antibody

Rabbit Polyclonal

Antigen Affinity Purified Protein ID P16104

Catalog No. A300-081A-T GeneID 3014

Lot No. A300-081A-T-23

APPLICATIONS	WB, IHC, ICC-IF
SPECIES REACTIVITY	Human, Mouse
AMOUNT	10 µl
CONCENTRATION	1000 µg/ml
STORAGE/SHELF LIFE	2 – 8°C / 1 year from date of receipt
PHYSICAL STATE	Liquid
BUFFER	Tris-citrate/phosphate buffer, pH 7 to 8 containing 0.09% Sodium Azide
ISOTYPE	IgG
ORIGIN	USA
PRODUCTION PROCEDURES	Antibody was affinity purified using an epitope specific to gamma-H2AX immobilized on solid support.

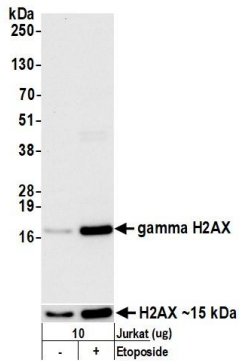
The epitope recognized by A300-081A-T maps to a region surrounding phosphorylated serine 140 of human histone H2AX using the numbering given in entry NP_002096.1 (GeneID 3014).

APPLICATIONS Centrifuge tube to remove product from lid. Optimal working dilutions should be determined experimentally by the investigator. Prepare working dilution immediately before use.

Western Blot	1:10,000 – 1:25,000
Immunohistochemistry	1:2,000 – 1:10,000. Epitope retrieval with citrate buffer pH6.0 is recommended for FFPE tissue sections.
Immunofluorescence (ICC)	1:500 – 1:5,000. Formaldehyde fixation is recommended. Permeabilization with Triton-X 100 is recommended for formaldehyde-fixed cells.

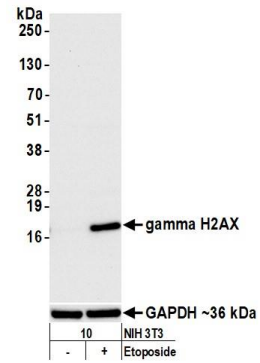
ADDITIONAL INFO <https://www.fortislife.com/p/A300-081A-T>
Use the link above to view SDS, a current list of citations, and other product specific information.

This document certifies that this product has met all of the quality control standards defined by Bethyl Laboratories, Inc.
Michael Spencer, PhD Date: August 8, 2022



Detection of human gamma H2AX by western blot.

Samples: Whole cell lysate (10 µg) from Jurkat cells treated with 100 µM etoposide (+) or mock treated (-). *Antibody:* Affinity purified rabbit anti-gamma H2AX antibody (A300-081A-T lot 23) used for WB at 1:1000. *Detection:* Chemiluminescence with an exposure time of 3 seconds. Lower Panel: Rabbit anti-H2AX recombinant monoclonal antibody [BLR059F] (A700-059).



Detection of mouse gamma H2AX by western blot.

Samples: Whole cell lysate (10 µg) from NIH 3T3 cells prepared using NETN lysis buffer. *Antibody:* Affinity purified rabbit anti-gamma H2AX antibody (A300-081A-T lot 23) used for WB at 1:1000. *Detection:* Chemiluminescence with an exposure time of 3 seconds. Lower Panel: Rabbit anti-GAPDH recombinant monoclonal antibody [BLR103H] (A700-103).