



SZABO SCANDIC

Part of Europa Biosite

Produktinformation



Forschungsprodukte & Biochemikalien



Zellkultur & Verbrauchsmaterial



Diagnostik & molekulare Diagnostik



Laborgeräte & Service

Weitere Information auf den folgenden Seiten!
See the following pages for more information!



Lieferung & Zahlungsart

siehe unsere [Liefer- und Versandbedingungen](#)

Zuschläge

- Mindermengenzuschlag
- Trockeneiszuschlag
- Gefahrgutzuschlag
- Expressversand

SZABO-SCANDIC HandelsgmbH

Quellenstraße 110, A-1100 Wien

T. +43(0)1 489 3961-0

F. +43(0)1 489 3961-7

mail@szabo-scandic.com

www.szabo-scandic.com

[linkedin.com/company/szaboscandic](https://www.linkedin.com/company/szaboscandic) 

gamma-H2AX Antibody

Rabbit Polyclonal

Antigen Affinity Purified

Protein ID P16104

Catalog No. A300-081A

GeneID 3014

Lot No. A300-081A-22



APPLICATIONS WB, IHC, ICC-IF

SPECIES REACTIVITY Human, Mouse

AMOUNT 100 µl

CONCENTRATION 1000 µg/ml

STORAGE/SHELF LIFE 2 – 8° C / 1 year from date of receipt

PHYSICAL STATE Liquid

BUFFER Tris-citrate/phosphate buffer, pH 7 to 8 containing 0.09% Sodium Azide

ISOTYPE IgG

ORIGIN USA

PRODUCTION PROCEDURES Antibody was affinity purified using an epitope specific to gamma-H2AX immobilized on solid support. Immunoglobulin concentration was determined by extinction coefficient: absorbance at 280 nm of 1.4 equals 1.0 mg of IgG.

The epitope recognized by A300-081A maps to a region surrounding phosphorylated serine 140 of human histone H2AX using the numbering given in entry NP_002096.1 (GeneID 3014).

APPLICATIONS Centrifuge tube to remove product from lid. Optimal working dilutions should be determined experimentally by the investigator. Prepare working dilution immediately before use.

Western Blot 1:10,000 – 1:25,000

Immunohistochemistry 1:2,000 to 1:10,000. Epitope retrieval with citrate buffer pH6.0 is recommended for FFPE tissue sections.

Immunofluorescence (ICC) 1:500 – 1:5,000. Formaldehyde fixation is recommended. Permeabilization with Triton-X 100 is recommended for formaldehyde-fixed cells.

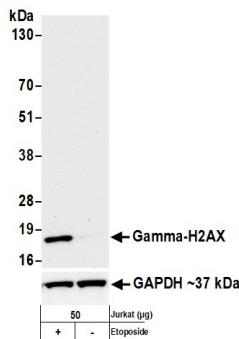
IHC HUMAN CONTROLS Breast Carcinoma, Ovarian Carcinoma, Prostate Carcinoma, Stomach Adenocarcinoma, Testicular Seminoma, HeLa Cells

IHC MOUSE CONTROLS Colon Carcinoma CT26, Hybridoma Tumor, Renal Cell Carcinoma

ADDITIONAL INFO <https://www.bethyl.com/product/A300-081A>

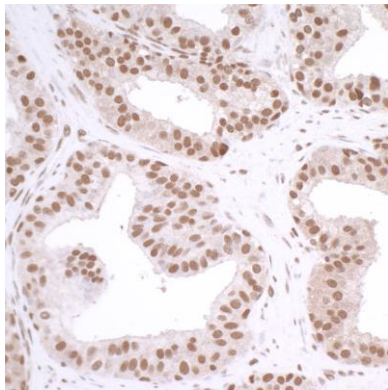
Use the link above to view SDS, a current list of citations, and other product specific information.

This document certifies that this product has met all of the quality control standards defined by Bethyl Laboratories, Inc.
Brian McWilliams, PhD Date: December 29, 2020

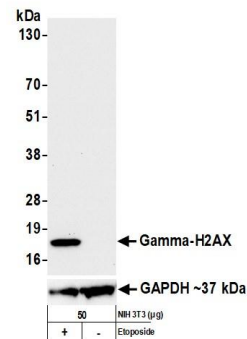


Detection of human gamma-H2AX by western blot.

Samples: Whole cell lysate (50 µg) from Jurkat cells treated with 100 µM etoposide (+) or mock treated (-). **Antibody:** Affinity purified rabbit anti-gamma-H2AX antibody (A300-081A lot 22) used for WB at 0.04 µg/ml. **Detection:** Chemiluminescence with an exposure time of 10 seconds. Lower Panel shows western blot for GAPDH using rabbit anti-GAPDH recombinant monoclonal antibody (A700-103). **Secondary:** HRP-conjugated goat anti-rabbit IgG (A120-101P).

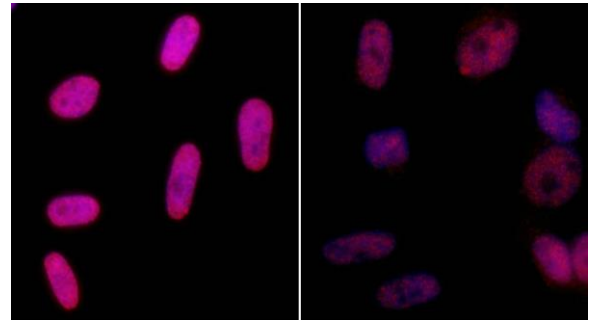


Detection of human gamma-H2AX by immunohistochemistry. **Sample:** FFPE section of human prostate carcinoma. **Antibody:** Affinity purified rabbit anti-gamma-H2AX (A300-081A lot 21) used at a dilution of 1:5,000 (0.2 µg/ml). **Detection:** DAB.

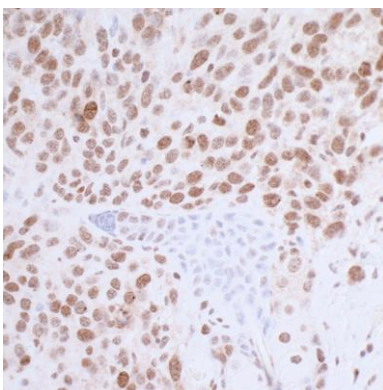


Detection of mouse gamma-H2AX by western blot.

Samples: Whole cell lysate (50 µg) from NIH 3T3 cells treated with 100 µM etoposide (+) or mock treated (-). **Antibody:** Affinity purified rabbit anti-gamma-H2AX antibody (A300-081A lot 22) used for WB at 0.04 µg/ml. **Detection:** Chemiluminescence with an exposure time of 10 seconds. Lower Panel shows western blot for GAPDH using rabbit anti-GAPDH recombinant monoclonal antibody (A700-103). **Secondary:** HRP-conjugated goat anti-rabbit IgG (A120-101P).



Detection of human gamma-H2AX by immunocytochemistry. **Samples:** Neocarzinostatin treated asynchronous HeLa cells (left) and untreated asynchronous HeLa cells (right). **Antibody:** Affinity purified rabbit anti-gamma-H2AX (A300-081A lot 12) used at a dilution of 1:5,000 (0.2 µg/ml). **Detection:** Red fluorescent Anti-rabbit IgG-DyLight® 594 conjugated used at a dilution of 1:100.



Detection of mouse gamma-H2AX by immunohistochemistry. *Sample:* FFPE section of mouse CT26 colon carcinoma. *Antibody:* Affinity purified rabbit anti-gamma-H2AX (A300-081A lot 21) used at a dilution of 1:5,000 (0.2 µg/ml). *Detection:* DAB.