



SZABO SCANDIC

Part of Europa Biosite

Produktinformation



Forschungsprodukte & Biochemikalien



Zellkultur & Verbrauchsmaterial



Diagnostik & molekulare Diagnostik



Laborgeräte & Service

Weitere Information auf den folgenden Seiten!
See the following pages for more information!



Lieferung & Zahlungsart

siehe unsere [Liefer- und Versandbedingungen](#)

Zuschläge

- Mindermengenzuschlag
- Trockeneiszuschlag
- Gefahrgutzuschlag
- Expressversand

SZABO-SCANDIC HandelsgmbH

Quellenstraße 110, A-1100 Wien

T. +43(0)1 489 3961-0

F. +43(0)1 489 3961-7

mail@szabo-scandic.com

www.szabo-scandic.com

[linkedin.com/company/szaboscandic](https://www.linkedin.com/company/szaboscandic) 

H2AX Antibody

Rabbit Polyclonal

Antigen Affinity Purified Protein ID P16104

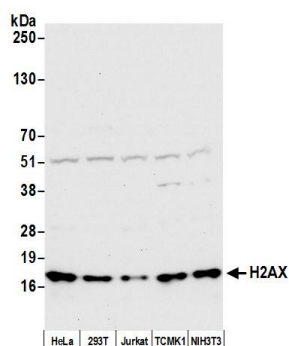
Catalog No. A300-082A GeneID 3014

Lot No. A300-082A-3



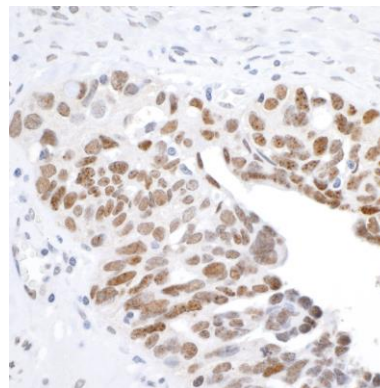
APPLICATIONS	WB, IHC, ICC, ICC-IF								
SPECIES REACTIVITY	Human, Mouse								
AMOUNT	100 µl								
CONCENTRATION	1000 µg/ml								
STORAGE/SHELF LIFE	2 – 8° C / 1 year from date of receipt								
PHYSICAL STATE	Liquid								
BUFFER	Tris-citrate/phosphate buffer, pH 7 to 8 containing 0.09% Sodium Azide								
ISOTYPE	IgG								
ORIGIN	USA								
PRODUCTION PROCEDURES	<p>Antibody was affinity purified using an epitope specific to H2AX immobilized on solid support.</p> <p>The epitope recognized by A300-082A maps to the C-terminus of human histone H2AX using the numbering given for Swiss-Prot entry P16104 (GeneID 3014).</p> <p>Immunoglobulin concentration was determined by extinction coefficient: absorbance at 280 nm of 1.4 equals 1.0 mg of IgG.</p>								
APPLICATIONS	<p>Centrifuge tube to remove product from lid. Optimal working dilutions should be determined experimentally by the investigator. Prepare working dilution immediately before use.</p> <table><tr><td>Western Blot</td><td>1:2,000 – 1:10,000</td></tr><tr><td>Immunohistochemistry</td><td>1:1,000 to 1:5,000. Epitope retrieval with citrate buffer pH6.0 is recommended for FFPE tissue sections.</td></tr><tr><td>Immunocytochemistry</td><td>1:1,000 to 1:5,000. Epitope retrieval with citrate buffer pH6.0 is recommended for FFPE cell sections.</td></tr><tr><td>Immunofluorescence (ICC)</td><td>1:400 – 1:800</td></tr></table>	Western Blot	1:2,000 – 1:10,000	Immunohistochemistry	1:1,000 to 1:5,000. Epitope retrieval with citrate buffer pH6.0 is recommended for FFPE tissue sections.	Immunocytochemistry	1:1,000 to 1:5,000. Epitope retrieval with citrate buffer pH6.0 is recommended for FFPE cell sections.	Immunofluorescence (ICC)	1:400 – 1:800
Western Blot	1:2,000 – 1:10,000								
Immunohistochemistry	1:1,000 to 1:5,000. Epitope retrieval with citrate buffer pH6.0 is recommended for FFPE tissue sections.								
Immunocytochemistry	1:1,000 to 1:5,000. Epitope retrieval with citrate buffer pH6.0 is recommended for FFPE cell sections.								
Immunofluorescence (ICC)	1:400 – 1:800								
APPLICATION NOTES	Western blot of lysates performed using standard western blot reagents and 4-12% SDS-PAGE.								
IHC HUMAN CONTROLS	Breast Carcinoma, Ovarian Carcinoma, HCT 116 Cells								
IHC MOUSE CONTROLS	Colon Carcinoma CT26, RenCa Cells								
ADDITIONAL INFO	<p>https://www.bethyl.com/product/A300-082A</p> <p>Use the link above to view SDS, a current list of citations, and other product specific information.</p>								

This document certifies that this product has met all of the quality control standards defined by Bethyl Laboratories, Inc.
Eric McIntush, PhD | Chief Scientific Officer Date: December 19, 2019



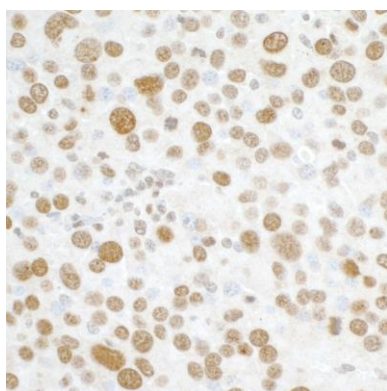
Detection of human and mouse H2AX by western blot.

Samples: Whole cell lysate (50 µg) from HeLa, HEK293T, Jurkat, TCMK-1, and NIH 3T3 cells prepared using NETN lysis buffer. *Antibody:* Affinity purified rabbit anti-H2AX antibody A300-082A (lot A300-082A-3) used for WB at 0.1 µg/ml. *Detection:* Chemiluminescence with an exposure time of 10 seconds.



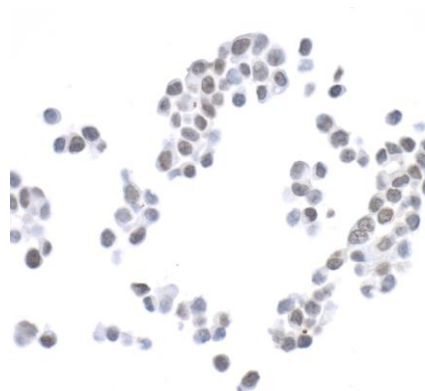
Detection of human H2AX by immunohistochemistry.

Sample: FFPE section of human ovarian carcinoma. *Antibody:* Affinity purified rabbit anti-H2AX (Cat. No. A300-082A lot 3) used at a dilution of 1:5,000 (0.2 µg/ml). *Detection:* DAB



Detection of mouse H2AX by immunohistochemistry.

Sample: FFPE section of mouse renal cell carcinoma. *Antibody:* Affinity purified rabbit anti-H2AX (Cat. No. A300-082A lot 3) used at a dilution of 1:5,000 (0.2 µg/ml). *Detection:* DAB



Detection of human H2AX by immunohistochemistry.

Sample: FFPE section of HCT 116 cell line. *Antibody:* Affinity purified rabbit anti-H2AX (Cat. No. A300-082A lot 3) used at a dilution of 1:5,000 (0.2 µg/ml). *Detection:* DAB