



SZABO SCANDIC

Part of Europa Biosite

Produktinformation



Forschungsprodukte & Biochemikalien



Zellkultur & Verbrauchsmaterial



Diagnostik & molekulare Diagnostik



Laborgeräte & Service

Weitere Information auf den folgenden Seiten!
See the following pages for more information!



Lieferung & Zahlungsart

siehe unsere [Liefer- und Versandbedingungen](#)

Zuschläge

- Mindermengenzuschlag
- Trockeneiszuschlag
- Gefahrgutzuschlag
- Expressversand

SZABO-SCANDIC HandelsgmbH

Quellenstraße 110, A-1100 Wien

T. +43(0)1 489 3961-0

F. +43(0)1 489 3961-7

mail@szabo-scandic.com

www.szabo-scandic.com

[linkedin.com/company/szaboscandic](https://www.linkedin.com/company/szaboscandic) 

Phospho MCM2 (S108) Antibody

Rabbit Polyclonal

Antigen Affinity Purified Protein ID NP_004517.2

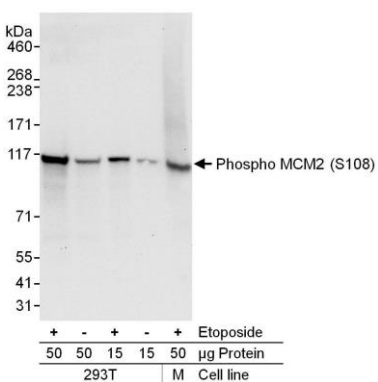
Catalog No. A300-094A-T GeneID 4171

Lot No. A300-094A-T-4



APPLICATIONS	WB, IHC
SPECIES REACTIVITY	Human, Mouse
AMOUNT	20 µl (2 blots)
CONCENTRATION	100 µg/ml
STORAGE/SHELF LIFE	2 - 8° C / 1 year from date of receipt
PHYSICAL STATE	Liquid
BUFFER	Tris-buffered Saline containing 0.1% BSA and 0.09% Sodium Azide
ISOTYPE	IgG
ORIGIN	USA
PRODUCTION PROCEDURES	Antibody was affinity purified using a synthetic peptide representing phosphorylation at Serine 108 and surrounding residues of MCM2 immobilized on solid support. Immunogen for A300-094A-T was a synthetic phosphorylated peptide, which represented a portion of human Minichromosomal Maintenance Deficient 2 surrounding Serine 108 according to the numbering given in entry NP_004517.2 (GeneID 4171).
APPLICATIONS	Centrifuge tube to remove product from lid. Optimal working dilutions should be determined experimentally by the investigator. Prepare working dilution immediately before use. Western Blot 1:1000 Immunohistochemistry 1:100 - 1:500. Epitope retrieval with citrate buffer pH 6.0 is recommended for FFPE tissue sections.
APPLICATION NOTES	Western blot of lysates performed using standard western blot reagents and 4-8% SDS-PAGE.
ADDITIONAL INFO	https://www.bethyl.com/product/A300-094A-T Use the link above to view SDS, a current list of citations, and other product specific information.

This document certifies that this product has met all of the quality control standards defined by Bethyl Laboratories, Inc.
Eric McIntush, PhD | Chief Scientific Officer Date: June 21, 2019



Detection of human and mouse Phospho μ M2 (S108) by western blot. *Samples:* Whole cell lysate (15 or 50 μ g) from HEK293T cells or mouse NIH 3T3 (M) cells treated with 100 μ M etoposide for 2 hours (+) or mock treated (-) cells. *Antibody:* Affinity purified rabbit anti-phospho μ M2 (S108) antibody A300-094A-T used at 1:1000. *Detection:* Chemiluminescence with an exposure time of 10 seconds.