



SZABO SCANDIC

Part of Europa Biosite

Produktinformation



Forschungsprodukte & Biochemikalien



Zellkultur & Verbrauchsmaterial



Diagnostik & molekulare Diagnostik



Laborgeräte & Service

Weitere Information auf den folgenden Seiten!
See the following pages for more information!



Lieferung & Zahlungsart

siehe unsere [Liefer- und Versandbedingungen](#)

Zuschläge

- Mindermengenzuschlag
- Trockeneiszuschlag
- Gefahrgutzuschlag
- Expressversand

SZABO-SCANDIC HandelsgmbH

Quellenstraße 110, A-1100 Wien

T. +43(0)1 489 3961-0

F. +43(0)1 489 3961-7

mail@szabo-scandic.com

www.szabo-scandic.com

[linkedin.com/company/szaboscandic](https://www.linkedin.com/company/szaboscandic)



Phospho MCM2 (S108) Antibody

Rabbit Polyclonal

Antigen Affinity Purified	RefSeq ID	NP_004517.2
Catalog No. A300-094A	Uniprot ID	P49736
Lot No. 5	GenelD	4171

APPLICATIONS	WB, IP, IHC
SPECIES REACTIVITY	Human, Mouse
AMOUNT	100 µl
CONCENTRATION	1000 µg/ml
STORAGE/SHELF LIFE	2 – 8°C / 1 year from date of receipt
PHYSICAL STATE	Liquid
BUFFER	Tris-citrate/phosphate buffer, pH 7 to 8 containing 0.09% Sodium Azide
ISOTYPE	IgG
ORIGIN	USA
PRODUCTION PROCEDURES	Antibody was affinity purified using a synthetic peptide representing phosphorylation at Serine 108 and surrounding residues of MCM2 immobilized on solid support.

Immunogen A300-094A was a synthetic phosphorylated peptide, which represented a portion of human Minichromosomal Maintenance Deficient 2 surrounding Serine 108 according to the numbering given in entry NP_004517.2 (GenelD 4171).

Immunoglobulin concentration was determined by extinction coefficient: absorbance at 280 nm of 1.4 equals 1.0 mg of IgG.

APPLICATIONS Centrifuge tube to remove product from lid. Optimal working dilutions should be determined experimentally by the investigator. Prepare working dilution immediately before use.

Western Blot	1:5,000 – 1:10,000
Immunoprecipitation	2 – 10 µg/mg lysate
Immunohistochemistry	1:1,000 to 1:5,000. Epitope retrieval with citrate buffer pH6.0 is recommended for FFPE tissue sections.

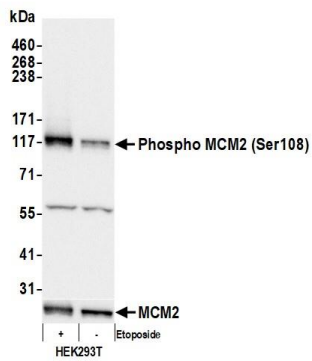
IHC HUMAN CONTROLS Breast Carcinoma, Colon Carcinoma, Glioblastoma, Non-Small Cell Lung Cancer, Ovarian Carcinoma, Prostate Carcinoma, Skin Squamous Cell Carcinoma, Testicular Seminoma

IHC MOUSE CONTROLS Plasmacytoma, Renal Cell Carcinoma, Teratoma

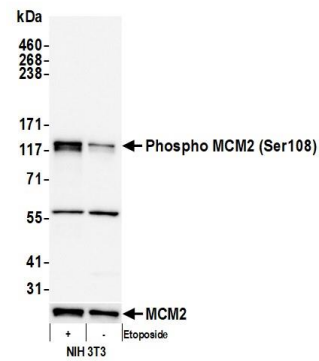
ADDITIONAL INFO <https://www.fortislifesciences.com/p/A300-094A>

Use the link above to view SDS, a current list of citations, and other product specific information.

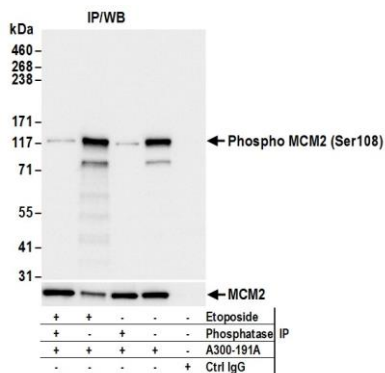
This document certifies that this product has met all of the quality control standards defined by Bethyl Laboratories, Inc.
Michael Spencer, PhD Date: June 15, 2023



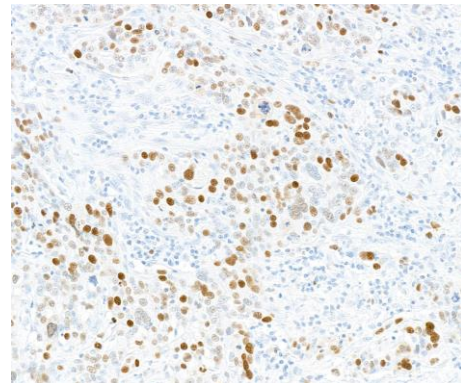
Detection of human Phospho MCM2 (Ser108) by western blot. *Samples:* Whole cell lysate (10 µg) from HEK293T cells treated with 100 µM etoposide (+) or mock treated (-). *Antibody:* Affinity purified rabbit anti-Phospho MCM2 (Ser108) antibody (A300-094A lot 5) used for WB at 0.1 µg/ml. *Detection:* Chemiluminescence with an exposure time of 1 second. Lower Panel: Rabbit anti-MCM2 antibody (A300-191A).



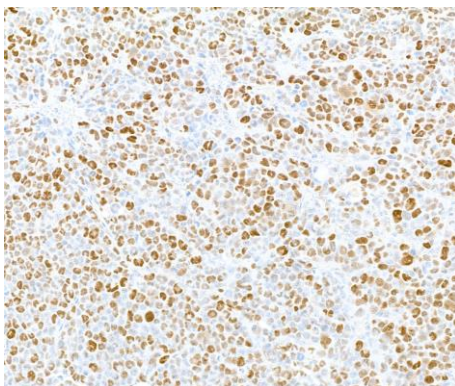
Detection of mouse Phospho MCM2 (Ser108) by western blot. *Samples:* Whole cell lysate (10 µg) from NIH 3T3 cells prepared using NETN lysis buffer. *Antibody:* Affinity purified rabbit anti-Phospho MCM2 (Ser108) antibody (A300-094A lot 5) used for WB at 1 µg/ml. *Detection:* Chemiluminescence with an exposure time of 3 seconds. Lower Panel: Rabbit anti-MCM2 antibody (A300-191A).



Detection of human Phospho MCM2 (Ser108) by western blot of immunoprecipitates. *Samples:* Whole cell lysate (1.0 mg per IP reaction; 20% of IP loaded) from HEK293T cells treated with etoposide (+) or mock treated (-). *Antibodies:* Affinity purified rabbit anti-MCM2 antibody (A300-191A) used for IP at 6 µg per reaction. Following immunoprecipitation, the IP reaction was treated with phosphatases (+) or mock treated (-). For blotting immunoprecipitated Phospho MCM2 (Ser108), A300-094A lot 5 was used at 0.1 µg/ml. *Detection:* Chemiluminescence with an exposure time of 1 second. Lower Panel: Rabbit anti-MCM2 antibody (A300-191A).



Detection of human Phospho MCM2 (S108) by immunohistochemistry. *Sample:* FFPE sections of human breast carcinoma. *Antibody:* Affinity purified rabbit anti-phospho MCM2 (S108) (Cat. No. A300-094A Lot5) used at a dilution of 1:5,000 (0.2µg/ml). *Detection:* DAB



Detection of mouse Phospho MCM2 (S108) by immunohistochemistry. *Sample:* FFPE sections of mouse plasmacytoma. *Antibody:* Affinity purified rabbit anti-phospho MCM2 (S108) (Cat. No. A300-094A Lot5) used at a dilution of 1:5,000 (0.2µg/ml). *Detection:* DAB