



SZABO SCANDIC

Part of Europa Biosite

Produktinformation



Forschungsprodukte & Biochemikalien



Zellkultur & Verbrauchsmaterial



Diagnostik & molekulare Diagnostik



Laborgeräte & Service

Weitere Information auf den folgenden Seiten!
See the following pages for more information!



Lieferung & Zahlungsart

siehe unsere [Liefer- und Versandbedingungen](#)

Zuschläge

- Mindermengenzuschlag
- Trockeneiszuschlag
- Gefahrgutzuschlag
- Expressversand

SZABO-SCANDIC HandelsgmbH

Quellenstraße 110, A-1100 Wien

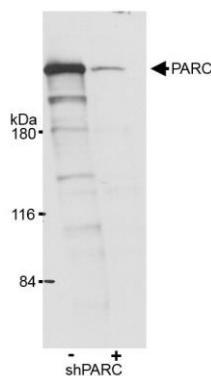
T. +43(0)1 489 3961-0

F. +43(0)1 489 3961-7

mail@szabo-scandic.com

www.szabo-scandic.com

[linkedin.com/company/szaboscandic](https://www.linkedin.com/company/szaboscandic) 



Detection of human PARC by western blot. *Samples:* Whole cell lysate (100 μ g) from untreated U2OS cells or U2OS derived cells that stably express a short hairpin RNA (shPARC) against PARC. Whole cell lysate (200 μ g) from BJAB cells. *Antibody:* Affinity purified rabbit anti-PARC antibody A300-098A-T (lot A300-098A-T-1) used at 1:1000. *Detection:* Chemiluminescence with an exposure time of less than 5 minutes.