



SZABO SCANDIC

Part of Europa Biosite

Produktinformation



Forschungsprodukte & Biochemikalien



Zellkultur & Verbrauchsmaterial



Diagnostik & molekulare Diagnostik



Laborgeräte & Service

Weitere Information auf den folgenden Seiten!
See the following pages for more information!



Lieferung & Zahlungsart

siehe unsere [Liefer- und Versandbedingungen](#)

Zuschläge

- Mindermengenzuschlag
- Trockeneiszuschlag
- Gefahrgutzuschlag
- Expressversand

SZABO-SCANDIC HandelsgmbH

Quellenstraße 110, A-1100 Wien

T. +43(0)1 489 3961-0

F. +43(0)1 489 3961-7

mail@szabo-scandic.com

www.szabo-scandic.com

[linkedin.com/company/szaboscandic](https://www.linkedin.com/company/szaboscandic) 

Menin Antibody

Rabbit Polyclonal

Antigen Affinity Purified

Protein ID NP_000235.2

Catalog No. A300-105A-T

GeneID 4221

Lot No. A300-105A-T-12



APPLICATIONS	WB, IP, IHC
PRESUMED REACTIVITY	Based on 100% sequence identity, this antibody is predicted to react with Human, Mouse, Rat, Bovine and Dog
AMOUNT	20 µl (2 blots)
CONCENTRATION	40 µg/ml
STORAGE/SHELF LIFE	2 – 8° C / 1 year from date of receipt
PHYSICAL STATE	Liquid
BUFFER	Tris-buffered Saline containing 0.1% BSA and 0.09% Sodium Azide
ISOTYPE	IgG
ORIGIN	USA
PRODUCTION PROCEDURES	Antibody was affinity purified using an epitope specific to Menin immobilized on solid support.

The epitope recognized by A300-105A-T maps to a region between residue 575 and the C-terminus (residue 615) of human Multiple Endocrine Neoplasia 1 using the numbering given in entry NP_000235.2 (GeneID 4221).

APPLICATIONS Centrifuge tube to remove product from lid. Optimal working dilutions should be determined experimentally by the investigator. Prepare working dilution immediately before use.

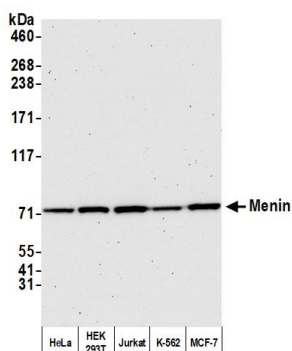
Western Blot 1:1000

Immunoprecipitation The antibody contained within A300-105A-T has been qualified for use in immunoprecipitation; however, we recommend using the alternative formulation of this antibody found as product A300-105A.

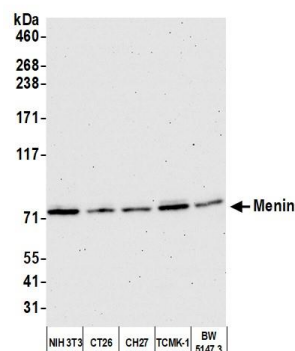
Immunohistochemistry 1:20 to 1:80. Epitope retrieval with citrate buffer pH6.0 is recommended for FFPE tissue sections.

ADDITIONAL INFO <https://www.bethyl.com/product/A300-105A-T>
Use the link above to view SDS, a current list of citations, and other product specific information.
IP-western blot protocol: https://www.bethyl.com/content/protocol_IP_WB

This document certifies that this product has met all of the quality control standards defined by Bethyl Laboratories, Inc.
Brian McWilliams, PhD Date: February 3, 2021



Detection of human Menin by western blot. Samples: Whole cell lysate (10 μ g) from HeLa, HEK293T, Jurkat, K-562, and MCF-7 cells prepared using NETN lysis buffer. **Antibody:** Affinity purified rabbit anti-Menin antibody (A300-105A-T lot 12) used for WB at 0.04 μ g/ml. **Detection:** Chemiluminescence with an exposure time of 75 seconds.



Detection of mouse Menin by western blot. Samples: Whole cell lysate (10 μ g) from NIH 3T3, CT26, CH27, TCMK-1, and BW5147.3 cells prepared using NETN lysis buffer. **Antibody:** Affinity purified rabbit anti-Menin antibody (A300-105A-T lot 12) used for WB at 0.04 μ g/ml. **Detection:** Chemiluminescence with an exposure time of 75 seconds.