



SZABO SCANDIC

Part of Europa Biosite

Produktinformation



Forschungsprodukte & Biochemikalien



Zellkultur & Verbrauchsmaterial



Diagnostik & molekulare Diagnostik



Laborgeräte & Service

Weitere Information auf den folgenden Seiten!
See the following pages for more information!



Lieferung & Zahlungsart

siehe unsere [Liefer- und Versandbedingungen](#)

Zuschläge

- Mindermengenzuschlag
- Trockeneiszuschlag
- Gefahrgutzuschlag
- Expressversand

SZABO-SCANDIC HandelsgmbH

Quellenstraße 110, A-1100 Wien

T. +43(0)1 489 3961-0

F. +43(0)1 489 3961-7

mail@szabo-scandic.com

www.szabo-scandic.com

[linkedin.com/company/szaboscandic](https://www.linkedin.com/company/szaboscandic) 

Menin Antibody

Rabbit Polyclonal

Antigen Affinity Purified

Protein ID NP_000235.2

Catalog No. A300-105A

GeneID 4221

Lot No. A300-105A-12



APPLICATIONS	WB, IP, IHC
PRESUMED REACTIVITY	Based on 100% sequence identity, this antibody is predicted to react with Human, Mouse, Rat, Bovine and Dog
AMOUNT	100 µl
CONCENTRATION	1000 µg/ml
STORAGE/SHELF LIFE	2 – 8° C / 1 year from date of receipt
PHYSICAL STATE	Liquid
BUFFER	Tris-citrate/phosphate buffer, pH 7 to 8 containing 0.09% Sodium Azide
ISOTYPE	IgG
ORIGIN	USA
PRODUCTION PROCEDURES	Antibody was affinity purified using an epitope specific to Menin immobilized on solid support.

The epitope recognized by A300-105A maps to a region between residue 575 and the C-terminus (residue 615) of human Multiple Endocrine Neoplasia 1 using the numbering given in entry NP_000235.2 (GeneID 4221).

Immunoglobulin concentration was determined by extinction coefficient: absorbance at 280 nm of 1.4 equals 1.0 mg of IgG.

APPLICATIONS Centrifuge tube to remove product from lid. Optimal working dilutions should be determined experimentally by the investigator. Prepare working dilution immediately before use.

Western Blot 1:10,000 – 1:25,000

Immunoprecipitation 2 – 10 µg/mg lysate

Immunohistochemistry 1:500 to 1:2,000. Epitope retrieval with citrate buffer pH6.0 is recommended for FFPE tissue sections.

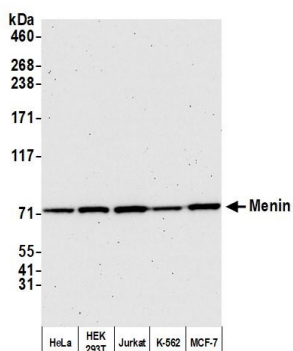
IHC HUMAN CONTROLS Breast Carcinoma, Non-Small Cell Lung Cancer, Prostate Carcinoma

ADDITIONAL INFO <https://www.bethyl.com/product/A300-105A>

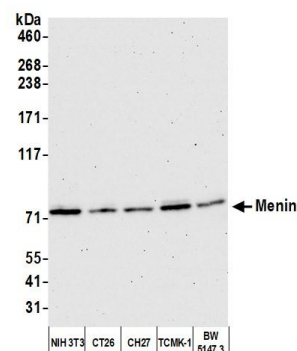
Use the link above to view SDS, a current list of citations, and other product specific information.

IP-western blot protocol: https://www.bethyl.com/content/protocol_IP_WB

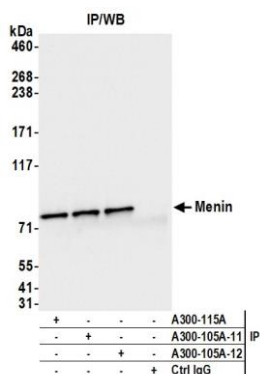
This document certifies that this product has met all of the quality control standards defined by Bethyl Laboratories, Inc.
Brian McWilliams, PhD Date: February 3, 2021



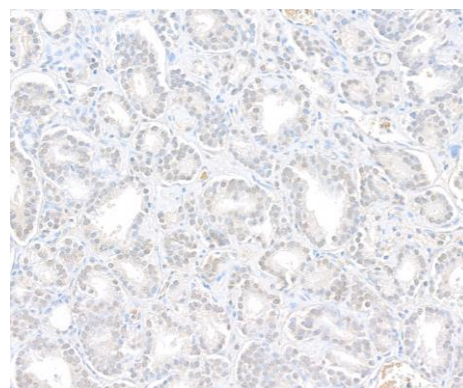
Detection of human Menin by western blot. Samples: Whole cell lysate (10 µg) from HeLa, HEK293T, Jurkat, K-562, and MCF-7 cells prepared using NETN lysis buffer. **Antibody:** Affinity purified rabbit anti-Menin antibody (A300-105A lot 12) used for WB at 0.04 µg/ml. **Detection:** Chemiluminescence with an exposure time of 75 seconds.



Detection of mouse Menin by western blot. Samples: Whole cell lysate (10 µg) from NIH 3T3, CT26, CH27, TCMK-1, and BW5147.3 cells prepared using NETN lysis buffer. **Antibody:** Affinity purified rabbit anti-Menin antibody (A300-105A lot 12) used for WB at 0.04 µg/ml. **Detection:** Chemiluminescence with an exposure time of 75 seconds.



Detection of human Menin by western blot of immunoprecipitates. Samples: Whole cell lysate (1.0 mg per IP reaction; 20% of IP loaded) from HeLa cells prepared using NETN lysis buffer. **Antibodies:** Affinity purified rabbit anti-Menin antibody A300-105A (A300-105A lot 12) used for IP at 4 µg per reaction. Menin was also immunoprecipitated by a previous lot of this antibody (A300-105A lot 11) and another rabbit anti-Menin antibody (A300-115A). For blotting immunoprecipitated Menin, A300-105A was used at 0.04 µg/ml. **Detection:** Chemiluminescence with an exposure time of 1 second.



Detection of human Menin by immunohistochemistry. Sample: FFPE section of human prostate carcinoma. **Antibody:** Affinity purified rabbit anti-Menin (A300-105A lot 12) used at a dilution of 1:1,000 (1 µg/ml). **Detection:** DAB