



# SZABO SCANDIC

Part of Europa Biosite

## Produktinformation



Forschungsprodukte & Biochemikalien



Zellkultur & Verbrauchsmaterial



Diagnostik & molekulare Diagnostik



Laborgeräte & Service

Weitere Information auf den folgenden Seiten!  
See the following pages for more information!



### Lieferung & Zahlungsart

siehe unsere [Liefer- und Versandbedingungen](#)

### Zuschläge

- Mindermengenzuschlag
- Trockeneiszuschlag
- Gefahrgutzuschlag
- Expressversand

### SZABO-SCANDIC HandelsgmbH

Quellenstraße 110, A-1100 Wien

T. +43(0)1 489 3961-0

F. +43(0)1 489 3961-7

[mail@szabo-scandic.com](mailto:mail@szabo-scandic.com)

[www.szabo-scandic.com](http://www.szabo-scandic.com)

[linkedin.com/company/szaboscandic](https://www.linkedin.com/company/szaboscandic) 

# RbBP5 Antibody

Rabbit Polyclonal

Antigen Affinity Purified

Protein ID NP\_005048.2

Catalog No. A300-109A-T

GeneID 5929

Lot No. A300-109A-T-3



**APPLICATIONS** WB, IP, IHC, ChIP, ChIP-chip, ChIP-Seq

**SPECIES REACTIVITY** Human, Mouse

**AMOUNT** 20 µl (2 blots)

**CONCENTRATION** 40 µg/ml

**PHYSICAL STATE** Liquid

**BUFFER** Tris-buffered Saline containing 0.1% BSA and 0.09% Sodium Azide

**ISOTYPE** IgG

**ORIGIN** USA

**APPLICATIONS** Centrifuge tube to remove product from lid. Optimal working dilutions should be determined experimentally by the investigator. Prepare working dilution immediately before use.

Western Blot 1:1000

Immunoprecipitation The antibody contained within A300-109A-T has been qualified for use in immunoprecipitation; however, we recommend using the alternative formulation of this antibody found as product A300-109A.

Immunohistochemistry 1:20 to 1:80. Epitope retrieval with citrate buffer pH6.0 is recommended for FFPE tissue sections.

ChIP The antibody contained within A300-109A-T has been qualified for use in ChIP, however, we recommend using the alternative formulation of this antibody found as product A300-109A.

ChIP-chip The antibody contained within A300-109A-T has been qualified for use in ChIP-chip; however, we recommend using the alternative formulation of this antibody found as product A300-109A.

ChIP-Seq The antibody contained within A300-109A-T has been qualified for use in ChIP-Seq; however, we recommend using the alternative formulation of this antibody found as product A300-109A.

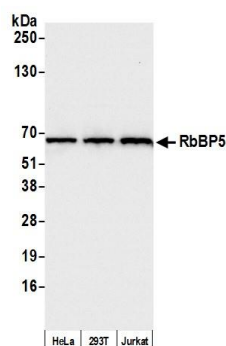
**ADDITIONAL INFO** <https://www.bethyl.com/product/A300-109A-T>

Use the link above to view SDS, a current list of citations, and other product specific information.

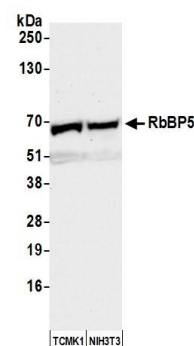
This document certifies that this product has met all of the quality control standards defined by Bethyl Laboratories, Inc.

Eric McIntush, PhD | Chief Scientific Officer

Date: July 31, 2019



**Detection of human RbBP5 by western blot.** *Samples:* Whole cell lysate (15  $\mu$ g) from HeLa, HEK293T, and Jurkat cells prepared using NETN lysis buffer. *Antibody:* Affinity purified rabbit anti-RbBP5 antibody A300-109A-M (lot A300-109A-M-3) used for WB at 1:1000. *Detection:* Chemiluminescence with an exposure time of 3 seconds.



**Detection of mouse RbBP5 by western blot.** *Samples:* Whole cell lysate (50  $\mu$ g) from TCMK-1 and NIH 3T3 cells prepared using NETN lysis buffer. *Antibody:* Affinity purified rabbit anti-RbBP5 antibody A300-109A-M (lot A300-109A-M-3) used for WB at 1:1000. *Detection:* Chemiluminescence with an exposure time of 10 seconds.