



SZABO SCANDIC

Part of Europa Biosite

Produktinformation



Forschungsprodukte & Biochemikalien



Zellkultur & Verbrauchsmaterial



Diagnostik & molekulare Diagnostik



Laborgeräte & Service

Weitere Information auf den folgenden Seiten!
See the following pages for more information!



Lieferung & Zahlungsart

siehe unsere [Liefer- und Versandbedingungen](#)

Zuschläge

- Mindermengenzuschlag
- Trockeneiszuschlag
- Gefahrgutzuschlag
- Expressversand

SZABO-SCANDIC HandelsgmbH

Quellenstraße 110, A-1100 Wien

T. +43(0)1 489 3961-0

F. +43(0)1 489 3961-7

mail@szabo-scandic.com

www.szabo-scandic.com

[linkedin.com/company/szaboscandic](https://www.linkedin.com/company/szaboscandic) 

Menin Antibody

Rabbit Polyclonal

Antigen Affinity Purified

Protein ID NP_000235.2

Catalog No. A300-115A-T

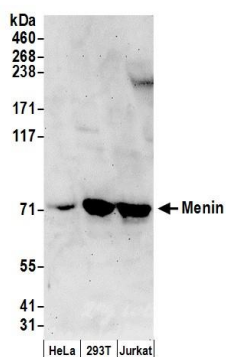
GeneID 4221

Lot No. A300-115A-T-1

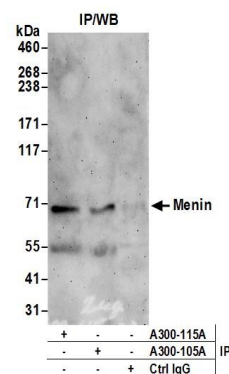


APPLICATIONS	WB, IP				
SPECIES REACTIVITY	Human				
AMOUNT	10 µl				
CONCENTRATION	1000 µg/ml				
STORAGE/SHELF LIFE	2 – 8° C / 1 year from date of receipt				
PHYSICAL STATE	Liquid				
BUFFER	Tris-citrate/phosphate buffer, pH 7 to 8 containing 0.09% Sodium Azide				
ISOTYPE	IgG				
ORIGIN	USA				
PRODUCTION PROCEDURES	<p>Antibody was affinity purified using an epitope specific to Menin immobilized on solid support.</p> <p>The epitope recognized by A300-115A-T maps to a region between residue 500 and 550 of human Multiple Endocrine Neoplasia 1 using the numbering given in entry NP_000235.2 (GeneID 4221).</p> <p>Immunoglobulin concentration was determined by extinction coefficient: absorbance at 280 nm of 1.4 equals 1.0 mg of IgG.</p>				
APPLICATIONS	<p>Centrifuge tube to remove product from lid. Optimal working dilutions should be determined experimentally by the investigator. Prepare working dilution immediately before use.</p> <table><tr><td>Western Blot</td><td>1:500 – 1:5,000</td></tr><tr><td>Immunoprecipitation</td><td>The antibody contained within A300-115A-T has been qualified for use in immunoprecipitation; however, we recommend using the alternative formulation of this antibody found as product A300-115A.</td></tr></table>	Western Blot	1:500 – 1:5,000	Immunoprecipitation	The antibody contained within A300-115A-T has been qualified for use in immunoprecipitation; however, we recommend using the alternative formulation of this antibody found as product A300-115A.
Western Blot	1:500 – 1:5,000				
Immunoprecipitation	The antibody contained within A300-115A-T has been qualified for use in immunoprecipitation; however, we recommend using the alternative formulation of this antibody found as product A300-115A.				
APPLICATION NOTES	<p>Western blot of immunoprecipitates performed using Normal Pig Serum (Cat. No. S100-020), Goat anti-Rabbit Light Chain HRP Conjugate (Cat. No. A120-113P) and 4-8% SDS-PAGE (link to IP-western blot protocol in Additional Info section below).</p> <p>Western blot of lysates performed using standard western blot reagents and 4-8% SDS-PAGE.</p>				
ADDITIONAL INFO	<p>https://www.bethyl.com/product/A300-115A-T</p> <p>Use the link above to view SDS, a current list of citations, and other product specific information.</p> <p>IP-western blot protocol: https://www.bethyl.com/content/protocol_IP_WB</p>				

This document certifies that this product has met all of the quality control standards defined by Bethyl Laboratories, Inc.
Eric McIntush, PhD | Chief Scientific Officer Date: June 21, 2019



Detection of human Menin by western blot. *Samples:* Whole cell lysate (50 μ g) from HeLa, HEK293T, and Jurkat cells prepared using NETN lysis buffer. *Antibodies:* Affinity purified rabbit anti-Menin antibody A300-115A-T (lot A300-115A-T-1) used for WB at 2 μ g/ml. *Detection:* Chemiluminescence with an exposure time of 3 minutes.



Detection of human Menin by western blot of immunoprecipitates. *Samples:* Whole cell lysate (0.5 or 1.0 mg per IP reaction; 20% of IP loaded) from HeLa cells prepared using NETN lysis buffer. *Antibodies:* Affinity purified rabbit anti-Menin antibody A300-115A-T (lot A300-115A-T-1) used for IP at 6 μ g per reaction. Menin was also immunoprecipitated by rabbit anti-Menin antibody A300-105A. For blotting immunoprecipitated Menin, A300-115A-T was used at 2 μ g/ml. *Detection:* Chemiluminescence with an exposure time of 3 minutes.