



SZABO SCANDIC

Part of Europa Biosite

Produktinformation



Forschungsprodukte & Biochemikalien



Zellkultur & Verbrauchsmaterial



Diagnostik & molekulare Diagnostik



Laborgeräte & Service

Weitere Information auf den folgenden Seiten!
See the following pages for more information!



Lieferung & Zahlungsart

siehe unsere [Liefer- und Versandbedingungen](#)

Zuschläge

- Mindermengenzuschlag
- Trockeneiszuschlag
- Gefahrgutzuschlag
- Expressversand

SZABO-SCANDIC HandelsgmbH

Quellenstraße 110, A-1100 Wien

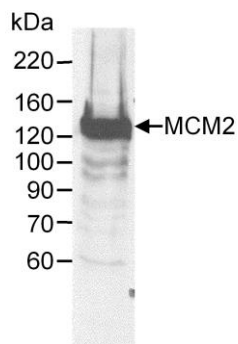
T. +43(0)1 489 3961-0

F. +43(0)1 489 3961-7

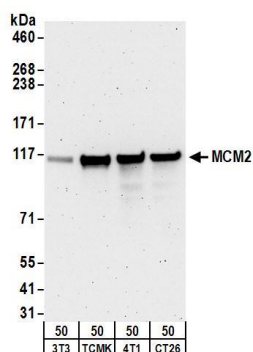
mail@szabo-scandic.com

www.szabo-scandic.com

[linkedin.com/company/szaboscandic](https://www.linkedin.com/company/szaboscandic) 



Detection of human MCM2 by western blot. *Sample:* Whole cell lysate (60 μ g) from HeLa cells. *Antibody:* Affinity purified goat anti-MCM2 A300-122A used at 0.25 μ g/ml. *Detection:* Chemiluminescence.



Detection of mouse MCM2 by western blot. *Samples:* Whole cell lysate (50 μ g) from NIH 3T3, TCMK-1, 4T1, and CT26.WT cells. *Antibodies:* Affinity purified goat anti-MCM2 antibody A300-122A (lot A300-122A-1) used for WB at 0.5 μ g/ml. *Detection:* Chemiluminescence with an exposure time of 3 minutes.