



SZABO SCANDIC

Part of Europa Biosite

Produktinformation



Forschungsprodukte & Biochemikalien



Zellkultur & Verbrauchsmaterial



Diagnostik & molekulare Diagnostik



Laborgeräte & Service

Weitere Information auf den folgenden Seiten!
See the following pages for more information!



Lieferung & Zahlungsart

siehe unsere [Liefer- und Versandbedingungen](#)

Zuschläge

- Mindermengenzuschlag
- Trockeneiszuschlag
- Gefahrgutzuschlag
- Expressversand

SZABO-SCANDIC HandelsgmbH

Quellenstraße 110, A-1100 Wien

T. +43(0)1 489 3961-0

F. +43(0)1 489 3961-7

mail@szabo-scandic.com

www.szabo-scandic.com

[linkedin.com/company/szaboscandic](https://www.linkedin.com/company/szaboscandic) 

MCM7 Antibody

Goat Polyclonal

Antigen Affinity Purified

Protein ID NP_005907.3

Catalog No. A300-128A

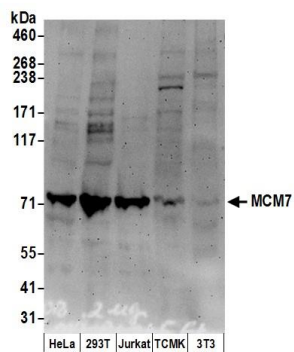
GeneID 4176

Lot No. A300-128A-2



APPLICATIONS	WB
SPECIES REACTIVITY	Human, Mouse
AMOUNT	100 μ l
CONCENTRATION	1000 μ g/ml
STORAGE/SHELF LIFE	2 - 8° C / 1 year from date of receipt
PHYSICAL STATE	Liquid
BUFFER	Tris-citrate/phosphate buffer, pH 7 to 8 containing 0.09% Sodium Azide
ISOTYPE	IgG
ORIGIN	USA
PRODUCTION PROCEDURES	Antibody was affinity purified using an epitope specific to MCM7 immobilized on solid support. The epitope recognized by A300-128A maps to a region between residues 300 and 350 of human Minichromosome Maintenance 7 using the numbering given in entry NP_005907.3 (GeneID 4176). Immunoglobulin concentration was determined by extinction coefficient: absorbance at 280 nm of 1.4 equals 1.0 mg of IgG.
APPLICATIONS	Centrifuge tube to remove product from lid. Optimal working dilutions should be determined experimentally by the investigator. Prepare working dilution immediately before use. Western Blot 1:2,000 - 1:10,000
APPLICATION NOTES	Western blot of lysates performed using standard western blot reagents and 4-8% SDS-PAGE.
ADDITIONAL INFO	https://www.bethyl.com/product/A300-128A Use the link above to view SDS, a current list of citations, and other product specific information.

This document certifies that this product has met all of the quality control standards defined by Bethyl Laboratories, Inc.
Eric McIntush, PhD | Chief Scientific Officer Date: June 21, 2019

**Detection of human and mouse MCM7 by western blot.**

Samples: Whole cell lysate (50 μ g) from HeLa, HEK293T, Jurkat, mouse TCMK-1, and mouse NIH 3T3 cells prepared using NETN lysis buffer. *Antibodies:* Affinity purified goat anti-MCM7 antibody A300-128A (lot A300-128A-2) used for WB at 0.2 μ g/ml. *Detection:* Chemiluminescence with an exposure time of 3 minutes.