



SZABO SCANDIC

Part of Europa Biosite

Produktinformation



Forschungsprodukte & Biochemikalien



Zellkultur & Verbrauchsmaterial



Diagnostik & molekulare Diagnostik



Laborgeräte & Service

Weitere Information auf den folgenden Seiten!
See the following pages for more information!



Lieferung & Zahlungsart

siehe unsere [Liefer- und Versandbedingungen](#)

Zuschläge

- Mindermengenzuschlag
- Trockeneiszuschlag
- Gefahrgutzuschlag
- Expressversand

SZABO-SCANDIC HandelsgmbH

Quellenstraße 110, A-1100 Wien

T. +43(0)1 489 3961-0

F. +43(0)1 489 3961-7

mail@szabo-scandic.com

www.szabo-scandic.com

[linkedin.com/company/szaboscandic](https://www.linkedin.com/company/szaboscandic) 

Sp1 Antibody

Rabbit Polyclonal

Antigen Affinity Purified Protein ID XP_028606.4

Catalog No. A300-133A GeneID 6667

Lot No. A300-133A-1



APPLICATIONS	WB, IP, IHC
SPECIES REACTIVITY	Human, Mouse
PRESUMED REACTIVITY	Based on 100% sequence identity, this antibody is predicted to react with Rat
AMOUNT	100 µl
CONCENTRATION	1000 µg/ml
STORAGE/SHELF LIFE	2 - 8° C / 1 year from date of receipt
PHYSICAL STATE	Liquid
BUFFER	Tris-citrate/phosphate buffer, pH 7 to 8 containing 0.09% Sodium Azide
ISOTYPE	IgG
ORIGIN	USA
PRODUCTION PROCEDURES	Antibody was affinity purified using the antigen immobilized on solid support. The epitope recognized by A300-133A maps to a region between residues 700 and 740 using the numbering given in entry XP_028606.4 (GeneID 6667). Immunoglobulin concentration was determined by extinction coefficient: absorbance at 280 nm of 1.4 equals 1.0 mg of IgG.

APPLICATIONS Centrifuge tube to remove product from lid. Optimal working dilutions should be determined experimentally by the investigator. Prepare working dilution immediately before use.

Western Blot 1:10,000 - 1:25,000

Immunoprecipitation 1 - 4 µg/mg lysate

Immunohistochemistry 1:500 - 1:2,000. Epitope retrieval with citrate buffer pH 6.0 is recommended for FFPE tissue sections.

APPLICATION NOTES Western blot of immunoprecipitates performed using Normal Pig Serum (Cat. No. S100-020), Goat anti-Rabbit Light Chain HRP Conjugate (Cat. No. A120-113P) and 4-8% SDS-PAGE (link to IP-western blot protocol in Additional Info section below).

IHC HUMAN CONTROLS Western blot of lysates performed using standard western blot reagents and 4-8% SDS-PAGE. Bladder Cell Carcinoma, Breast Carcinoma, Metastatic Lymph Node, Ovarian Carcinoma, Stomach Adenocarcinoma, Testicular Seminoma

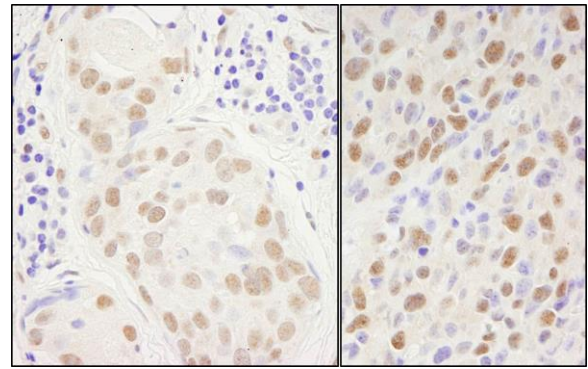
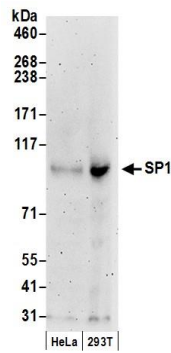
IHC MOUSE CONTROLS Squamous Cell Carcinoma

ADDITIONAL INFO <https://www.bethyl.com/product/A300-133A>

Use the link above to view SDS, a current list of citations, and other product specific information.

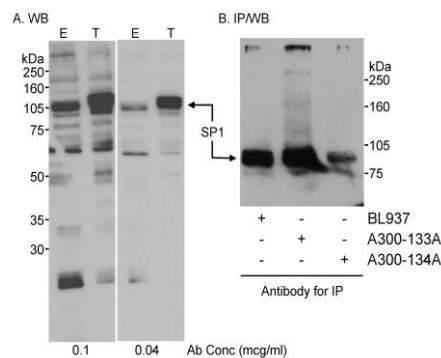
IP-western blot protocol: https://www.bethyl.com/content/protocol_IP_WB

This document certifies that this product has met all of the quality control standards defined by Bethyl Laboratories, Inc.
Eric McIntush, PhD | Chief Scientific Officer Date: June 21, 2019



Detection of human SP1 by western blot. *Samples:* Whole cell lysate (50 μ g) from HeLa and HEK293T cells prepared using NETN lysis buffer. *Antibody:* Affinity purified rabbit anti-SP1 antibody A300-133A (lot A300-133A-1) used for WB at 0.04 μ g/ml. *Detection:* Chemiluminescence with an exposure time of 3 minutes.

Detection of human and mouse SP1 by immunohistochemistry. *Sample:* FFPE sections of human breast carcinoma (left) and mouse squamous cell carcinoma (right). *Antibody:* Affinity purified rabbit anti-SP1 (Cat. No. A300-133A Lot1) used at a dilution of 1:1,000 (1 μ g/ml). *Detection:* DAB



Detection of human SP1 by western blot and immunoprecipitation. *Samples:* A. Whole cell lysate (50 μ g for E; 10 μ g for T) from HEK HEK293T cells that were mock transfected (E) or transfected with an Sp1 expression construct (T). B. Whole cell lysate (~700 μ g) from HEK 293T cells. *Antibody:* A. Affinity purified rabbit anti-Sp1 antibody A300-133A used at the indicated concentrations. B. SP1 was immunoprecipitated using affinity purified rabbit anti-SP1 antibodies BL937, A300-133A, or A300-134A using each antibody at 3.75 μ g/mg lysate. Subsequently, A300-133A was used at 0.04 μ g/ml for WB. *Detection:* Chemiluminescence with an exposure time of 10 seconds (A) or 1 min (B).