



# SZABO SCANDIC

Part of Europa Biosite

## Produktinformation



Forschungsprodukte & Biochemikalien



Zellkultur & Verbrauchsmaterial



Diagnostik & molekulare Diagnostik



Laborgeräte & Service

Weitere Information auf den folgenden Seiten!  
See the following pages for more information!



### Lieferung & Zahlungsart

siehe unsere [Liefer- und Versandbedingungen](#)

### Zuschläge

- Mindermengenzuschlag
- Trockeneiszuschlag
- Gefahrgutzuschlag
- Expressversand

### SZABO-SCANDIC HandelsgmbH

Quellenstraße 110, A-1100 Wien

T. +43(0)1 489 3961-0

F. +43(0)1 489 3961-7

[mail@szabo-scandic.com](mailto:mail@szabo-scandic.com)

[www.szabo-scandic.com](http://www.szabo-scandic.com)

[linkedin.com/company/szaboscandic](https://www.linkedin.com/company/szaboscandic) 

# Sp1 Antibody

Rabbit Polyclonal

|                           |            |             |
|---------------------------|------------|-------------|
| Antigen Affinity Purified | RefSeq ID  | XP_028606.4 |
| Catalog No. A300-134A-T   | Uniprot ID | P08047      |
| Lot No. A300-134A-T-6     | GeneID     | 6667        |

---

|                              |  |
|------------------------------|--|
| <b>APPLICATIONS</b>          | WB, IP, IHC, ChIP-Seq  |
| <b>SPECIES REACTIVITY</b>    | Human, Mouse   |
| <b>AMOUNT</b>                | 10 µl  |
| <b>CONCENTRATION</b>         | 200 µg/ml  |
| <b>STORAGE/SHELF LIFE</b>    | 2 – 8°C / 1 year from date of receipt  |
| <b>PHYSICAL STATE</b>        | Liquid   |
| <b>BUFFER</b>                | Tris-buffered Saline containing 0.1% BSA and 0.09% Sodium Azide                |
| <b>ISOTYPE</b>               | IgG  |
| <b>ORIGIN</b>                | USA  |
| <b>PRODUCTION PROCEDURES</b> | Antibody was affinity purified using the antigen immobilized on solid support. |

The epitope recognized by A300-134A-T maps to a region between residue 750 and the C-terminus (residue 785) using the numbering given in entry XP\_028606.4 (GeneID 6667).

**APPLICATIONS** Centrifuge tube to remove product from lid. Optimal working dilutions should be determined experimentally by the investigator. Prepare working dilution immediately before use.

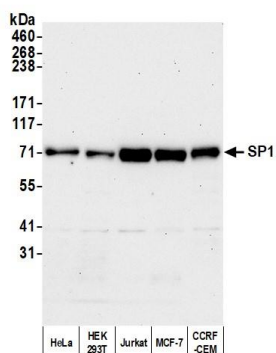
|                      |   |
|----------------------|---|
| Western Blot         | 1:2,000 – 1:10,000  |
| Immunoprecipitation  | 2 – 10 µg/mg lysate   |
| Immunohistochemistry | 1:2,000 – 1:10,000. Epitope retrieval with citrate buffer pH 6.0 is recommended for FFPE tissue sections. |
| ChIP-Seq             | 4 µg/30 µg chromatin  |

**IHC HUMAN CONTROLS** Breast Carcinoma, Ovarian Carcinoma

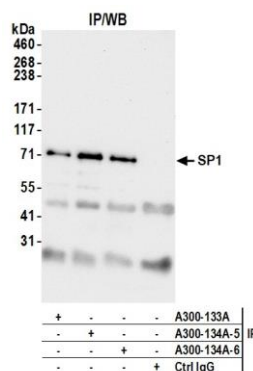
**IHC MOUSE CONTROLS** Renal Cell Carcinoma

**ADDITIONAL INFO** <https://www.fortislife.com/p/A300-134A-T>  
Use the link above to view SDS, a current list of citations, and other product specific information.

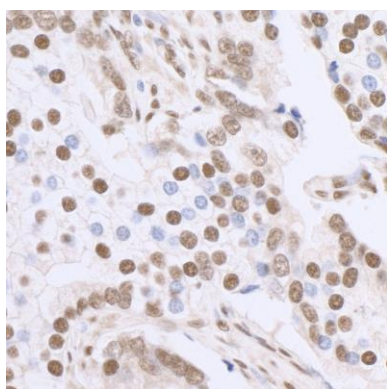
This document certifies that this product has met all of the quality control standards defined by Bethyl Laboratories, Inc.  
Michael Spencer, PhD Date: February 28, 2023



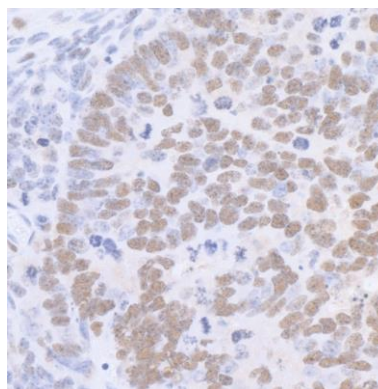
**Detection of human SP1 by western blot.** *Samples:* Whole cell lysate (50 µg) from HeLa, HEK293T, Jurkat, MCF-7, and CCRF-CEM cells prepared using NETN lysis buffer. *Antibody:* Affinity purified rabbit anti-SP1 antibody (A300-134A lot 6) used for WB at 0.1 µg/ml. *Detection:* Chemiluminescence with an exposure time of 3 minutes.



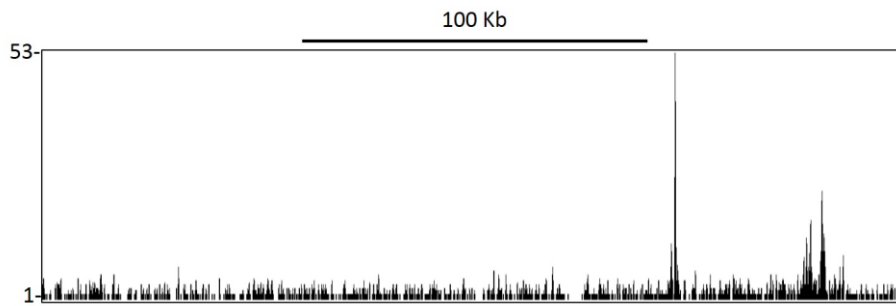
**Detection of human SP1 by western blot of immunoprecipitates.** *Samples:* Whole cell lysate (1.0 mg per IP reaction; 20% of IP loaded) from HEK293T cells prepared using NETN lysis buffer. *Antibodies:* Affinity purified rabbit anti-SP1 antibody (A300-134A lot 6) used for IP at 6 µg per reaction. SP1 was also immunoprecipitated by a previous lot of this antibody (A300-134A lot 5) and a second antibody against a different epitope of SP1 (A300-133A). For blotting immunoprecipitated SP1, A300-134A was used at 0.2 µg/ml. *Detection:* Chemiluminescence with an exposure time of 30 seconds.



**Detection of human SP1 by immunohistochemistry.** *Sample:* FFPE section of human breast carcinoma. *Antibody:* Affinity purified rabbit anti-SP1 (Cat. No. A300-134A Lot5) used at a dilution of 1:5,000 (0.2µg/ml). *Detection:* DAB



**Detection of mouse SP1 by immunohistochemistry.** *Sample:* FFPE section of mouse renal cell carcinoma. *Antibody:* Affinity purified rabbit anti-SP1 (Cat. No. A300-134A Lot5) used at a dilution of 1:5,000 (0.2µg/ml). *Detection:* DAB



**Localization of Sp1 Binding Sites by ChIP-seq.** Chromatin from acute myeloid leukemia cell line was immunoprecipitated with anti-Sp1 antibody A300-134A and analyzed by DNA sequencing. The figure illustrates the peak distribution of Sp1 binding within a 250 Kb region of chromosome 6 as detected using anti-Sp1 A300-134A. ChIP-seq validation performed by Active Motif, Carlsbad, CA.