



SZABO SCANDIC

Part of Europa Biosite

Produktinformation



Forschungsprodukte & Biochemikalien



Zellkultur & Verbrauchsmaterial



Diagnostik & molekulare Diagnostik



Laborgeräte & Service

Weitere Information auf den folgenden Seiten!
See the following pages for more information!



Lieferung & Zahlungsart

siehe unsere [Liefer- und Versandbedingungen](#)

Zuschläge

- Mindermengenzuschlag
- Trockeneiszuschlag
- Gefahrgutzuschlag
- Expressversand

SZABO-SCANDIC HandelsgmbH

Quellenstraße 110, A-1100 Wien

T. +43(0)1 489 3961-0

F. +43(0)1 489 3961-7

mail@szabo-scandic.com

www.szabo-scandic.com

[linkedin.com/company/szaboscandic](https://www.linkedin.com/company/szaboscandic) 

NF1 Antibody

Rabbit Polyclonal

Antigen Affinity Purified Protein ID NP_000258.1

Catalog No. A300-140A-T GeneID 4763

Lot No. A300-140A-T-4

APPLICATIONS WB, IP

SPECIES REACTIVITY Human, Mouse

PRESUMED REACTIVITY Based on 100% sequence identity, this antibody is predicted to react with Rat

AMOUNT 10 µl

CONCENTRATION 1000 µg/ml

STORAGE/SHELF LIFE 2 – 8°C / 1 year from date of receipt

PHYSICAL STATE Liquid

BUFFER Tris-citrate/phosphate buffer, pH 7 to 8 containing 0.09% Sodium Azide

ISOTYPE IgG

ORIGIN USA

PRODUCTION PROCEDURES Antibody was affinity purified using an epitope specific to Neurofibromin immobilized on solid support.

The epitope recognized by A300-140A-T maps to a region between residue 2760 and the C-terminus (residue 2818) of human Neurofibromin 1 using the numbering given in entry NP_000258.1 (GeneID 4763)

APPLICATIONS Centrifuge tube to remove product from lid. Optimal working dilutions should be determined experimentally by the investigator. Prepare working dilution immediately before use.

Western Blot 1:1,000 – 1:10,000

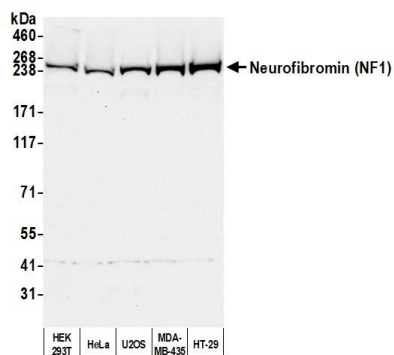
Immunoprecipitation 2 – 10 µg/mg lysate

ADDITIONAL INFO <https://www.bethyl.com/product/A300-140A-T>

Use the link above to view SDS, a current list of citations, and other product specific information.

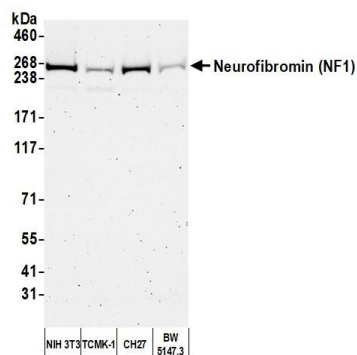
IP-western blot protocol: https://www.bethyl.com/content/protocol_IP_WB

This document certifies that this product has met all of the quality control standards defined by Bethyl Laboratories, Inc.
Michael Spencer, PhD Date: April 28, 2022



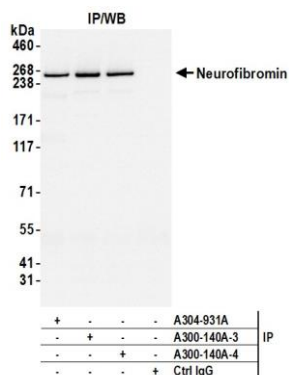
Detection of human Neurofibromin (NF1) by western blot.

Samples: Whole cell lysate (50 µg) from HEK293T, HeLa, U2OS, MDA-MB-435, and HT-29 cells prepared using NETN lysis buffer. *Antibody:* Affinity purified rabbit anti-Neurofibromin (NF1) antibody (A300-140A lot 4) used for WB at 0.1 µg/ml. *Detection:* Chemiluminescence with an exposure time of 10 seconds.



Detection of mouse Neurofibromin (NF1) by western blot.

Samples: Whole cell lysate (50 µg) from NIH 3T3, TCMK-1, CH27, and BW5147.3 cells prepared using NETN lysis buffer. *Antibody:* Affinity purified rabbit anti-Neurofibromin (NF1) antibody (A300-140A lot 4) used for WB at 0.1 µg/ml. *Detection:* Chemiluminescence with an exposure time of 3 minutes.



Detection of human Neurofibromin (NF1) by western blot of immunoprecipitates.

Samples: Whole cell lysate (1.0 mg per IP reaction; 20% of IP loaded) from HEK293T cells prepared using NETN lysis buffer. *Antibodies:* Affinity purified rabbit anti-Neurofibromin (NF1) antibody (A300-140A lot 4) used for IP at 6 µg per reaction. Neurofibromin (NF1) was also immunoprecipitated by a previous lot of this antibody (A300-140A lot 3) and a second antibody against a different epitope of Neurofibromin (NF1) (A304-931A-1). For blotting immunoprecipitated Neurofibromin (NF1), A300-140A was used at 1 µg/ml. *Detection:* Chemiluminescence with an exposure time of 1 second.