



SZABO SCANDIC

Part of Europa Biosite

Produktinformation



Forschungsprodukte & Biochemikalien



Zellkultur & Verbrauchsmaterial



Diagnostik & molekulare Diagnostik



Laborgeräte & Service

Weitere Information auf den folgenden Seiten!
See the following pages for more information!



Lieferung & Zahlungsart

siehe unsere [Liefer- und Versandbedingungen](#)

Zuschläge

- Mindermengenzuschlag
- Trockeneiszuschlag
- Gefahrgutzuschlag
- Expressversand

SZABO-SCANDIC HandelsgmbH

Quellenstraße 110, A-1100 Wien

T. +43(0)1 489 3961-0

F. +43(0)1 489 3961-7

mail@szabo-scandic.com

www.szabo-scandic.com

[linkedin.com/company/szaboscandic](https://www.linkedin.com/company/szaboscandic) 

NF1 Antibody

Rabbit Polyclonal

Antigen Affinity Purified Protein ID NP_000258.1

Catalog No. A300-140A GeneID 4763

Lot No. A300-140A-4

APPLICATIONS	WB, IP
SPECIES REACTIVITY	Human, Mouse
PRESUMED REACTIVITY	Based on 100% sequence identity, this antibody is predicted to react with Rat
AMOUNT	100 µl
CONCENTRATION	1000 µg/ml
STORAGE/SHELF LIFE	2 – 8°C / 1 year from date of receipt
PHYSICAL STATE	Liquid
BUFFER	Tris-citrate/phosphate buffer, pH 7 to 8 containing 0.09% Sodium Azide
ISOTYPE	IgG
ORIGIN	USA
PRODUCTION PROCEDURES	Antibody was affinity purified using an epitope specific to Neurofibromin immobilized on solid support.

The epitope recognized by A300-140A maps to a region between residue 2760 and the C-terminus (residue 2818) of human Neurofibromin 1 using the numbering given in entry NP_000258.1 (GeneID 4763)

Immunoglobulin concentration was determined by extinction coefficient: absorbance at 280 nm of 1.4 equals 1.0 mg of IgG.

APPLICATIONS Centrifuge tube to remove product from lid. Optimal working dilutions should be determined experimentally by the investigator. Prepare working dilution immediately before use.

Western Blot 1:1,000 – 1:10,000

Immunoprecipitation 2 – 10 µg/mg lysate

ADDITIONAL INFO <https://www.bethyl.com/product/A300-140A>

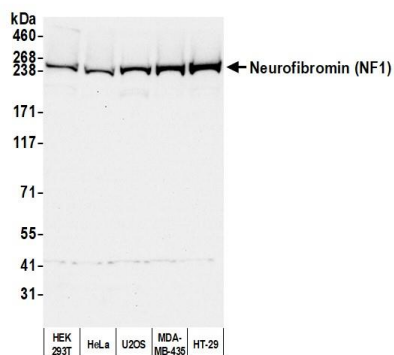
Use the link above to view SDS, a current list of citations, and other product specific information.

IP-western blot protocol: https://www.bethyl.com/content/protocol_IP_WB

This document certifies that this product has met all of the quality control standards defined by Bethyl Laboratories, Inc.

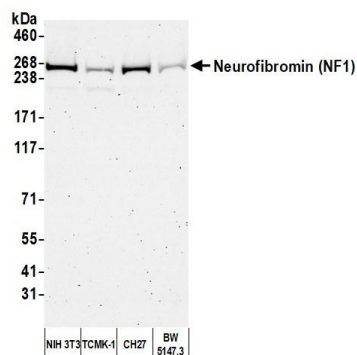
Michael Spencer, PhD

Date: April 28, 2022



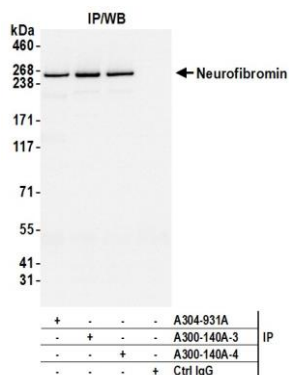
Detection of human Neurofibromin (NF1) by western blot.

Samples: Whole cell lysate (50 µg) from HEK293T, HeLa, U2OS, MDA-MB-435, and HT-29 cells prepared using NETN lysis buffer. *Antibody:* Affinity purified rabbit anti-Neurofibromin (NF1) antibody (A300-140A lot 4) used for WB at 0.1 µg/ml. *Detection:* Chemiluminescence with an exposure time of 10 seconds.



Detection of mouse Neurofibromin (NF1) by western blot.

Samples: Whole cell lysate (50 µg) from NIH 3T3, TCMK-1, CH27, and BW5147.3 cells prepared using NETN lysis buffer. *Antibody:* Affinity purified rabbit anti-Neurofibromin (NF1) antibody (A300-140A lot 4) used for WB at 0.1 µg/ml. *Detection:* Chemiluminescence with an exposure time of 3 minutes.



Detection of human Neurofibromin (NF1) by western blot of immunoprecipitates.

Samples: Whole cell lysate (1.0 mg per IP reaction; 20% of IP loaded) from HEK293T cells prepared using NETN lysis buffer. *Antibodies:* Affinity purified rabbit anti-Neurofibromin (NF1) antibody (A300-140A lot 4) used for IP at 6 µg per reaction. Neurofibromin (NF1) was also immunoprecipitated by a previous lot of this antibody (A300-140A lot 3) and a second antibody against a different epitope of Neurofibromin (NF1) (A304-931A-1). For blotting immunoprecipitated Neurofibromin (NF1), A300-140A was used at 1 µg/ml. *Detection:* Chemiluminescence with an exposure time of 1 second.