



SZABO SCANDIC

Part of Europa Biosite

Produktinformation



Forschungsprodukte & Biochemikalien



Zellkultur & Verbrauchsmaterial



Diagnostik & molekulare Diagnostik



Laborgeräte & Service

Weitere Information auf den folgenden Seiten!
See the following pages for more information!



Lieferung & Zahlungsart

siehe unsere [Liefer- und Versandbedingungen](#)

Zuschläge

- Mindermengenzuschlag
- Trockeneiszuschlag
- Gefahrgutzuschlag
- Expressversand

SZABO-SCANDIC HandelsgmbH

Quellenstraße 110, A-1100 Wien

T. +43(0)1 489 3961-0

F. +43(0)1 489 3961-7

mail@szabo-scandic.com

www.szabo-scandic.com

[linkedin.com/company/szaboscandic](https://www.linkedin.com/company/szaboscandic) 

RFC1 Antibody

Goat Polyclonal

Antigen Affinity Purified	RefSeq ID	NP_002904.3
Catalog No. A300-141A-T	Uniprot ID	P35251
Lot No. 2	GeneID	5981

APPLICATIONS	WB, IP
SPECIES REACTIVITY	Human
AMOUNT	10 µl
CONCENTRATION	1000 µg/ml
STORAGE/SHELF LIFE	2 – 8°C / 1 year from date of receipt
PHYSICAL STATE	Liquid
BUFFER	Tris-citrate/phosphate buffer, pH 7 to 8 containing 0.09% Sodium Azide
ISOTYPE	IgG
ORIGIN	USA
PRODUCTION PROCEDURES	Antibody was affinity purified using an epitope specific to RFC1 immobilized on solid support.

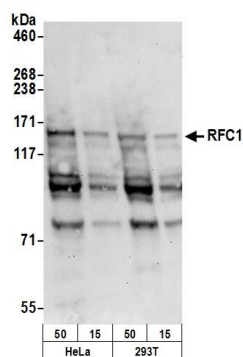
The epitope recognized by A300-141A maps to a region between residue 1100 and the C-terminus (residue 1148) of human Replication Factor C subunit 1 using the numbering given in entry NP_002904.3 (GeneID 5981).

Immunoglobulin concentration was determined using Beer's Law where 1 mg/mL IgG has an A280 of 1.4.

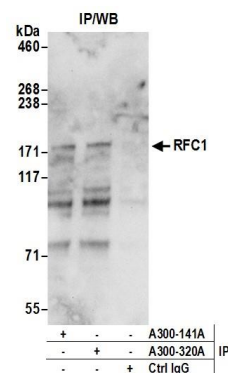
APPLICATIONS	Centrifuge tube to remove product from lid. Optimal working dilutions should be determined experimentally by the investigator. Prepare working dilution immediately before use.
	Western Blot 1:2000 – 1:10,000
	Immunoprecipitation 6 µg/mg lysate

ADDITIONAL INFO	https://www.fortislife.com/p/A300-141A-T Use the link above to view SDS, a current list of citations, and other product specific information.
------------------------	---

This document certifies that this product has met all of the quality control standards defined by Bethyl Laboratories, Inc.
Michael Spencer, PhD Date: January 31, 2024



Detection of human RFC1 by western blot. *Samples:* Whole cell lysate (50, 15 µg) from HeLa and HEK293T cells prepared using NETN lysis buffer. *Antibody:* Affinity purified goat anti-RFC1 antibody A300-141A (lot A300-141A-2) used for WB at 0.1 µg/ml. *Detection:* Chemiluminescence with an exposure time of 30 seconds.



Detection of human RFC1 by western blot of immunoprecipitates. *Samples:* Whole cell lysate (0.5 or 1.0 mg per IP reaction; 20% of IP loaded) from HeLa cells prepared using NETN lysis buffer. *Antibodies:* Affinity purified goat anti-RFC1 antibody A300-141A (lot A300-141A-2) used for IP at 6 µg per reaction. RFC1 was also immunoprecipitated by rabbit anti-RFC1 antibody A300-320A. For blotting immunoprecipitated RFC1, A300-141A was used at 0.4 µg/ml. *Detection:* Chemiluminescence with an exposure time of 10 seconds.