



SZABO SCANDIC

Part of Europa Biosite

Produktinformation



Forschungsprodukte & Biochemikalien



Zellkultur & Verbrauchsmaterial



Diagnostik & molekulare Diagnostik



Laborgeräte & Service

Weitere Information auf den folgenden Seiten!
See the following pages for more information!



Lieferung & Zahlungsart

siehe unsere [Liefer- und Versandbedingungen](#)

Zuschläge

- Mindermengenzuschlag
- Trockeneiszuschlag
- Gefahrgutzuschlag
- Expressversand

SZABO-SCANDIC HandelsgmbH

Quellenstraße 110, A-1100 Wien

T. +43(0)1 489 3961-0

F. +43(0)1 489 3961-7

mail@szabo-scandic.com

www.szabo-scandic.com

[linkedin.com/company/szaboscandic](https://www.linkedin.com/company/szaboscandic) 

Phospho XRCC1 (S461) Antibody

Rabbit Polyclonal

Antigen Affinity Purified Protein ID P18887

Catalog No. A300-147A GeneID 7515

Lot No. A300-147A-1



APPLICATIONS	WB, IHC
SPECIES REACTIVITY	Human
AMOUNT	100 µl
CONCENTRATION	1000 µg/ml
STORAGE/SHELF LIFE	2 – 8° C / 1 year from date of receipt
PHYSICAL STATE	Liquid
BUFFER	Tris-citrate/phosphate buffer, pH 7 to 8 containing 0.09% Sodium Azide
ISOTYPE	IgG
ORIGIN	USA
PRODUCTION PROCEDURES	Antibody was affinity purified using an epitope specific to phosphorylation at Ser 461 of XRCC1 immobilized on solid support.

The epitope recognized by A300-147A maps to a region of surrounding residue Ser 416 of human X-ray Repair Complementing protein 1 using the numbering given in SwissProt entry P18887 (GeneID 7515).

Immunoglobulin concentration was determined by extinction coefficient: absorbance at 280 nm of 1.4 equals 1.0 mg of IgG.

APPLICATIONS Centrifuge tube to remove product from lid. Optimal working dilutions should be determined experimentally by the investigator. Prepare working dilution immediately before use.

Western Blot 1:1,000 – 1:5,000

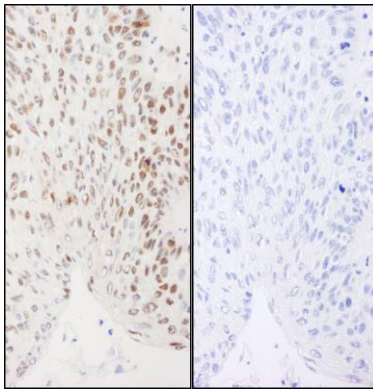
Immunohistochemistry 1:500 – 1:2,000. Epitope retrieval with citrate buffer pH 6.0 is recommended for FFPE tissue sections.

APPLICATION NOTES Western blot of lysates performed using standard western blot reagents and 4–8% SDS-PAGE.

IHC HUMAN CONTROLS Breast Carcinoma, Laryngeal Squamous Cell Carcinoma, Ovarian Carcinoma, Prostate Carcinoma

ADDITIONAL INFO <https://www.bethyl.com/product/A300-147A>
Use the link above to view SDS, a current list of citations, and other product specific information.

This document certifies that this product has met all of the quality control standards defined by Bethyl Laboratories, Inc.
Eric McIntush, PhD | Chief Scientific Officer Date: June 21, 2019



Detection of human Phospho XRCC1 (S461) by immunohistochemistry. *Samples:* FFPE serial sections of human larynx squamous cell carcinoma. Mock phosphatase treated section (left) and calf intestinal phosphatase-treated section (right). *Antibody:* Affinity purified rabbit anti-Phospho XRCC1 (S461). (Cat. No. A300-147A Lot1) used at a dilution of 1:1,000 (1 μ g/ml. *Detection:* DAB