



SZABO SCANDIC

Part of Europa Biosite

Produktinformation



Forschungsprodukte & Biochemikalien



Zellkultur & Verbrauchsmaterial



Diagnostik & molekulare Diagnostik



Laborgeräte & Service

Weitere Information auf den folgenden Seiten!
See the following pages for more information!



Lieferung & Zahlungsart

siehe unsere [Liefer- und Versandbedingungen](#)

Zuschläge

- Mindermengenzuschlag
- Trockeneiszuschlag
- Gefahrgutzuschlag
- Expressversand

SZABO-SCANDIC HandelsgmbH

Quellenstraße 110, A-1100 Wien

T. +43(0)1 489 3961-0

F. +43(0)1 489 3961-7

mail@szabo-scandic.com

www.szabo-scandic.com

[linkedin.com/company/szaboscandic](https://www.linkedin.com/company/szaboscandic) 

Phospho Rad17 (S645) Antibody

Rabbit Polyclonal

Antigen Affinity Purified Protein ID NP_002864.1

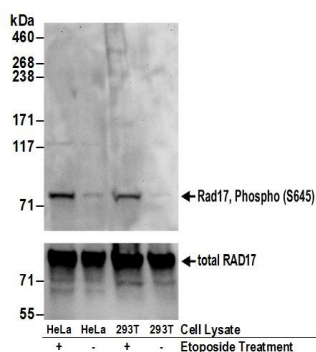
Catalog No. A300-153A-T GeneID 5884

Lot No. A300-153A-T-2



APPLICATIONS	WB, IHC
SPECIES REACTIVITY	Human, Mouse
PRESUMED REACTIVITY	Based on 100% sequence identity, this antibody is predicted to react with Orangutan
AMOUNT	20 µl (2 blots)
CONCENTRATION	400 µg/ml
STORAGE/SHELF LIFE	2 - 8° C / 1 year from date of receipt
PHYSICAL STATE	Liquid
BUFFER	Tris-buffered Saline containing 0.1% BSA and 0.09% Sodium Azide
ISOTYPE	IgG
ORIGIN	USA
PRODUCTION PROCEDURES	<p>Antibody was affinity purified using a synthetic peptide representing phosphorylation at Serine 645 and surrounding residues of Rad17 immobilized on solid support.</p> <p>Immunogen for A300-153A-T was a phosphorylated synthetic peptide, which represented a portion of human Rad17 (GeneID 5884) around serine 645 according to the numbering given in entry NP_002864.1.</p>
APPLICATIONS	<p>Centrifuge tube to remove product from lid. Optimal working dilutions should be determined experimentally by the investigator. Prepare working dilution immediately before use.</p> <p>Western Blot 1:1000</p> <p>Immunohistochemistry 1:200 - 1:800. Epitope retrieval with citrate buffer pH 6.0 is recommended for FFPE tissue sections.</p>
APPLICATION NOTES	Western blot of lysates performed using standard western blot reagents and 4-8% SDS-PAGE.
ADDITIONAL INFO	<p>https://www.bethyl.com/product/A300-153A-T</p> <p>Use the link above to view SDS, a current list of citations, and other product specific information.</p>

This document certifies that this product has met all of the quality control standards defined by Bethyl Laboratories, Inc.
Eric McIntush, PhD | Chief Scientific Officer Date: June 21, 2019



Detection of human Rad17, Phospho (S645) by western blot. *Samples:* Whole cell lysate (50 μ g) from HeLa and HEK293T cells treated with 100 μ M etoposide for 2 hours (+) or mock treated (-) cells. *Antibody:* Affinity purified rabbit anti-Rad17, Phospho (S645) antibody A300-153A-T used at 1:1000. To examine total Rad17, the membrane was reblotted with goat anti-Rad17 antibody BL239 (lower panel). *Detection:* Chemiluminescence with an exposure time of 30 seconds (upper and lower panels).