



SZABO SCANDIC

Part of Europa Biosite

Produktinformation



Forschungsprodukte & Biochemikalien



Zellkultur & Verbrauchsmaterial



Diagnostik & molekulare Diagnostik



Laborgeräte & Service

Weitere Information auf den folgenden Seiten!
See the following pages for more information!



Lieferung & Zahlungsart

siehe unsere [Liefer- und Versandbedingungen](#)

Zuschläge

- Mindermengenzuschlag
- Trockeneiszuschlag
- Gefahrgutzuschlag
- Expressversand

SZABO-SCANDIC HandelsgmbH

Quellenstraße 110, A-1100 Wien

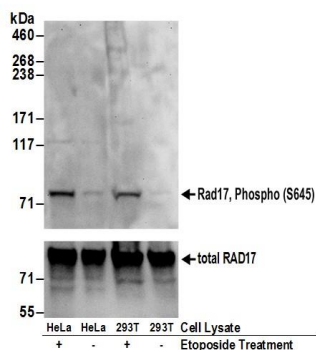
T. +43(0)1 489 3961-0

F. +43(0)1 489 3961-7

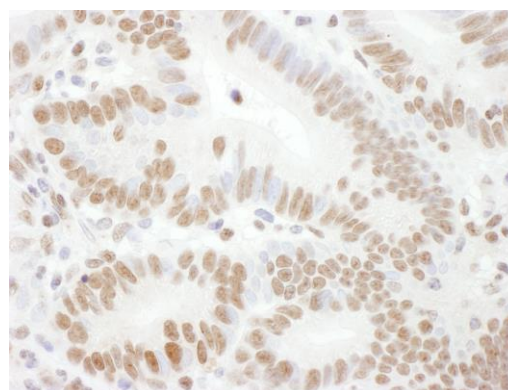
mail@szabo-scandic.com

www.szabo-scandic.com

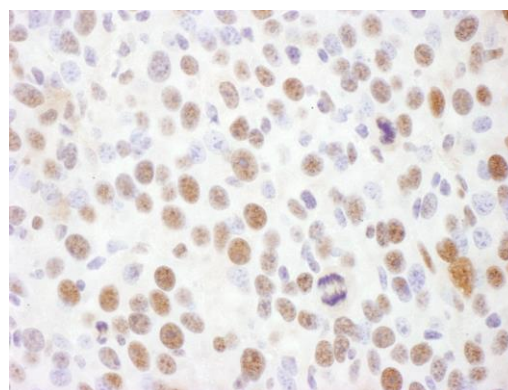
[linkedin.com/company/szaboscandic](https://www.linkedin.com/company/szaboscandic) 



Detection of human Rad17, Phospho (S645) by western blot. *Samples:* Whole cell lysate (50 µg) from HeLa and HEK293T cells treated with 100 µM etoposide for 2 hours (+) or mock treated (-) cells. *Antibodies:* Affinity purified rabbit anti-Rad17, Phospho (S645) antibody A300-153A (lot A300-153A-2) used for WB at 0.4 µg/ml. To examine total Rad17, the membrane was reblotted with goat anti-Rad17 antibody BL239 (lower panel). *Detection:* Chemiluminescence with exposure times of 30 seconds (upper and lower panels).



Detection of human Phospho Rad17 (S645) by immunohistochemistry. *Sample:* FFPE section of human colon carcinoma. *Antibody:* Affinity purified rabbit anti-Phospho Rad17 (S645) (Cat. No. A300-153A Lot2) used at a dilution of 1:1,000 (1 µg/ml). *Detection:* DAB



Detection of mouse Phospho Rad17 (S645) by immunohistochemistry. *Sample:* FFPE section of mouse renal cell carcinoma. *Antibody:* Affinity purified rabbit anti-Phospho Rad17 (S645) (Cat. No. A300-153A Lot2) used at a dilution of 1:1,000 (1 µg/ml). *Detection:* DAB