



# SZABO SCANDIC

Part of Europa Biosite

## Produktinformation



Forschungsprodukte & Biochemikalien



Zellkultur & Verbrauchsmaterial



Diagnostik & molekulare Diagnostik



Laborgeräte & Service

Weitere Information auf den folgenden Seiten!  
See the following pages for more information!



### Lieferung & Zahlungsart

siehe unsere [Liefer- und Versandbedingungen](#)

### Zuschläge

- Mindermengenzuschlag
- Trockeneiszuschlag
- Gefahrgutzuschlag
- Expressversand

### SZABO-SCANDIC HandelsgmbH

Quellenstraße 110, A-1100 Wien

T. +43(0)1 489 3961-0

F. +43(0)1 489 3961-7

[mail@szabo-scandic.com](mailto:mail@szabo-scandic.com)

[www.szabo-scandic.com](http://www.szabo-scandic.com)

[linkedin.com/company/szaboscandic](https://www.linkedin.com/company/szaboscandic) 

# SA1 Antibody

Goat Polyclonal

Antigen Affinity Purified

Protein ID NP\_005853.2

Catalog No. A300-156A-T

GeneID 10274

Lot No. A300-156A-T-2



<b>APPLICATIONS</b>	WB, IP, ICC
<b>SPECIES REACTIVITY</b>	Human
<b>PRESUMED REACTIVITY</b>	Based on 100% sequence identity, this antibody is predicted to react with Mouse
<b>AMOUNT</b>	20 µl (2 blots)
<b>CONCENTRATION</b>	500 µg/ml
<b>STORAGE/SHELF LIFE</b>	2 - 8° C / 1 year from date of receipt
<b>PHYSICAL STATE</b>	Liquid
<b>BUFFER</b>	Tris-buffered Saline containing 0.1% BSA and 0.09% Sodium Azide
<b>ISOTYPE</b>	IgG
<b>ORIGIN</b>	USA
<b>PRODUCTION PROCEDURES</b>	Antibody was affinity purified using an epitope specific to SA1 immobilized on solid support.

The epitope recognized by A300-156A-T maps to a region between residues 25 and 75 of human Stromal Antigen 1 using the numbering given in entry NP\_005853.2 (GeneID 10274).

**APPLICATIONS** Centrifuge tube to remove product from lid. Optimal working dilutions should be determined experimentally by the investigator. Prepare working dilution immediately before use.

Western Blot 1:1000

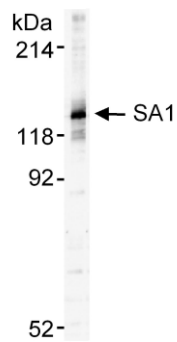
Immunoprecipitation The antibody contained within A300-156A-T has been qualified for use in immunoprecipitation; however, we recommend using the alternative formulation of this antibody found as product A300-156A.

Immunocytochemistry 1:50 - 1:200

**ADDITIONAL INFO** <https://www.bethyl.com/product/A300-156A-T>

Use the link above to view SDS, a current list of citations, and other product specific information.

This document certifies that this product has met all of the quality control standards defined by Bethyl Laboratories, Inc.  
Eric McIntush, PhD | Chief Scientific Officer Date: May 29, 2020

**Detection of human and mouse SA1 by western blot.**

*Samples:* Whole cell lysate (15  $\mu$ g) from HeLa, MCF-7, HEK293T, TCMK-1, and NIH 3T3 cells prepared using NETN lysis buffer. *Antibody:* Affinity purified rabbit anti-SA1 antibody A300-156A-T (lot A300-156A-T-2) used for WB at 1:1000. *Detection:* Chemiluminescence with an exposure time of 30 seconds.