



SZABO SCANDIC

Part of Europa Biosite

Produktinformation



Forschungsprodukte & Biochemikalien



Zellkultur & Verbrauchsmaterial



Diagnostik & molekulare Diagnostik



Laborgeräte & Service

Weitere Information auf den folgenden Seiten!
See the following pages for more information!



Lieferung & Zahlungsart

siehe unsere [Liefer- und Versandbedingungen](#)

Zuschläge

- Mindermengenzuschlag
- Trockeneiszuschlag
- Gefahrgutzuschlag
- Expressversand

SZABO-SCANDIC HandelsgmbH

Quellenstraße 110, A-1100 Wien

T. +43(0)1 489 3961-0

F. +43(0)1 489 3961-7

mail@szabo-scandic.com

www.szabo-scandic.com

[linkedin.com/company/szaboscandic](https://www.linkedin.com/company/szaboscandic) 

SA1 Antibody

Goat Polyclonal

Antigen Affinity Purified

Protein ID NP_005853.2

Catalog No. A300-156A

GeneID 10274

Lot No. A300-156A-2



APPLICATIONS WB, IP, ICC

SPECIES REACTIVITY Human, Mouse

AMOUNT 100 µl

CONCENTRATION 1000 µg/ml

STORAGE/SHELF LIFE 2 – 8° C / 1 year from date of receipt

PHYSICAL STATE Liquid

BUFFER Tris-citrate/phosphate buffer, pH 7 to 8 containing 0.09% Sodium Azide

ISOTYPE IgG

ORIGIN USA

PRODUCTION PROCEDURES Antibody was affinity purified using an epitope specific to SA1 immobilized on solid support.

The epitope recognized by A300-156A maps to a region between residues 25 and 75 of human Stromal Antigen 1 using the numbering given in entry NP_005853.2 (GeneID 10274).

Immunoglobulin concentration was determined by extinction coefficient: absorbance at 280 nm of 1.4 equals 1.0 mg of IgG.

APPLICATIONS Centrifuge tube to remove product from lid. Optimal working dilutions should be determined experimentally by the investigator. Prepare working dilution immediately before use.

Western Blot 1:2,000 – 1:10,000

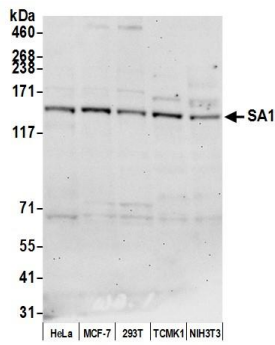
Immunoprecipitation 2 – 10 µg/mg lysate

Immunocytochemistry 1:500 – 1:2,000

ADDITIONAL INFO <https://www.bethyl.com/product/A300-156A>

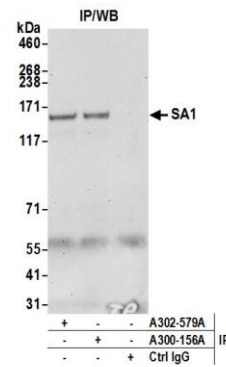
Use the link above to view SDS, a current list of citations, and other product specific information.

This document certifies that this product has met all of the quality control standards defined by Bethyl Laboratories, Inc.
Eric McIntush, PhD | Chief Scientific Officer Date: May 29, 2020



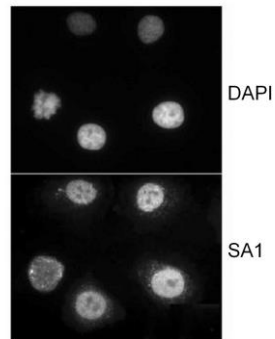
Detection of human and mouse SA1 by western blot.

Samples: Whole cell lysate (15 µg) from HeLa, MCF-7, HEK293T, TCMK-1, and NIH 3T3 cells prepared using NETN lysis buffer. **Antibody:** Affinity purified rabbit anti-SA1 antibody A300-156A (lot A300-156A-2) used for WB at 0.1 µg/ml. **Detection:** Chemiluminescence with an exposure time of 30 seconds.



Detection of human SA1 by western blot of immunoprecipitates.

Samples: Whole cell lysate (1.0 mg per IP reaction; 20% of IP loaded) from HeLa cells prepared using NETN lysis buffer. **Antibodies:** Affinity purified rabbit anti-SA1 antibody A300-156A (lot A300-156A-2) used for IP at 6 µg per reaction. SA1 was also immunoprecipitated by rabbit anti-SA1 antibody A302-579A. For blotting immunoprecipitated SA1, A300-156A was used at 0.1 µg/ml. **Detection:** Chemiluminescence with an exposure time of 30 seconds.



Localization of human SA1. **Sample:** HeLa cells that were extracted for 5 min at 4C in 0.5% Triton in CSK buffer. **Antibody:** Affinity purified goat anti-SA1 (BL140G; A300-156A) used at 1 µg/ml.