



# SZABO SCANDIC

Part of Europa Biosite

## Produktinformation



Forschungsprodukte & Biochemikalien



Zellkultur & Verbrauchsmaterial



Diagnostik & molekulare Diagnostik



Laborgeräte & Service

Weitere Information auf den folgenden Seiten!  
See the following pages for more information!



### Lieferung & Zahlungsart

siehe unsere [Liefer- und Versandbedingungen](#)

### Zuschläge

- Mindermengenzuschlag
- Trockeneiszuschlag
- Gefahrgutzuschlag
- Expressversand

### SZABO-SCANDIC HandelsgmbH

Quellenstraße 110, A-1100 Wien

T. +43(0)1 489 3961-0

F. +43(0)1 489 3961-7

[mail@szabo-scandic.com](mailto:mail@szabo-scandic.com)

[www.szabo-scandic.com](http://www.szabo-scandic.com)

[linkedin.com/company/szaboscandic](https://www.linkedin.com/company/szaboscandic) 

# Chk1 Antibody

Goat Polyclonal

Antigen Affinity Purified	RefSeq ID	NP_001265.1
Catalog No. A300-162A	Uniprot ID	O14757
Lot No. A300-162A-2	GeneID	1111

---

<b>APPLICATIONS</b>	WB, IP
<b>SPECIES REACTIVITY</b>	Human
<b>AMOUNT</b>	100 µl
<b>CONCENTRATION</b>	1000 µg/ml
<b>STORAGE/SHELF LIFE</b>	2 – 8°C / 1 year from date of receipt
<b>PHYSICAL STATE</b>	Liquid
<b>BUFFER</b>	Tris-citrate/phosphate buffer, pH 7 to 8 containing 0.09% Sodium Azide
<b>ISOTYPE</b>	IgG
<b>ORIGIN</b>	USA
<b>PRODUCTION PROCEDURES</b>	Antibody was affinity purified using an epitope specific to Chk1 immobilized on solid support.

The epitope recognized by A300-162A maps to a region between residues 250 and 300 of human Checkpoint Kinase 1 using the numbering given in entry NP\_001265.1 (GeneID 1111).

Immunoglobulin concentration was determined by extinction coefficient: absorbance at 280 nm of 1.4 equals 1.0 mg of IgG.

**APPLICATIONS** Centrifuge tube to remove product from lid. Optimal working dilutions should be determined experimentally by the investigator. Prepare working dilution immediately before use.

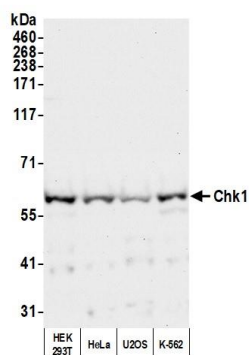
Western Blot 1:1,000 – 1:10,000

Immunoprecipitation 5 – 20 µg/mg lysate

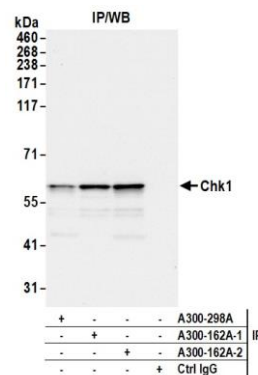
**ADDITIONAL INFO** <https://www.fortislife.com/p/A300-162A>

Use the link above to view SDS, a current list of citations, and other product specific information.

This document certifies that this product has met all of the quality control standards defined by Bethyl Laboratories, Inc.  
Michael Spencer, PhD Date: November 15, 2022



**Detection of human Chk1 by western blot.** *Samples:* Whole cell lysate (50 µg) from HEK293T, HeLa, U2OS, and K-562 cells prepared using NETN lysis buffer. *Antibody:* Affinity purified goat anti-Chk1 antibody (A300-162A lot 2) used for WB at 1 µg/ml. *Detection:* Chemiluminescence with an exposure time of 10 seconds.



**Detection of human Chk1 by western blot of immunoprecipitates.** *Samples:* Whole cell lysate (1.0 mg per IP reaction; 20% of IP loaded) from HEK293T cells prepared using NETN lysis buffer. *Antibodies:* Affinity purified goat anti-Chk1 antibody (A300-162A lot 2) used for IP at 6 µg per reaction. Chk1 was also immunoprecipitated by a previous lot of this antibody (A300-162A lot 1) and a second antibody against a different epitope of Chk1 (A300-298A). For blotting immunoprecipitated Chk1, A300-162A was used at 1 µg/ml. *Detection:* Chemiluminescence with an exposure time of 3 seconds.