



SZABO SCANDIC

Part of Europa Biosite

Produktinformation



Forschungsprodukte & Biochemikalien



Zellkultur & Verbrauchsmaterial



Diagnostik & molekulare Diagnostik



Laborgeräte & Service

Weitere Information auf den folgenden Seiten!
See the following pages for more information!



Lieferung & Zahlungsart

siehe unsere [Liefer- und Versandbedingungen](#)

Zuschläge

- Mindermengenzuschlag
- Trockeneiszuschlag
- Gefahrgutzuschlag
- Expressversand

SZABO-SCANDIC HandelsgmbH

Quellenstraße 110, A-1100 Wien

T. +43(0)1 489 3961-0

F. +43(0)1 489 3961-7

mail@szabo-scandic.com

www.szabo-scandic.com

[linkedin.com/company/szaboscandic](https://www.linkedin.com/company/szaboscandic) 

ELYS Antibody

Rabbit Polyclonal

Antigen Affinity Purified	RefSeq ID	NP_056261.4
Catalog No. A300-166A-T	Uniprot ID	Q8WYP5
Lot No. 2	GeneID	25909

APPLICATIONS	WB, IP
SPECIES REACTIVITY	Human
AMOUNT	10 µl
CONCENTRATION	1000 µg/ml
STORAGE/SHELF LIFE	2 – 8°C / 1 year from date of receipt
PHYSICAL STATE	Liquid
BUFFER	Tris-citrate/phosphate buffer, pH 7 to 8 containing 0.09% Sodium Azide
ISOTYPE	IgG
ORIGIN	USA
PRODUCTION PROCEDURES	Antibody was affinity purified using an epitope specific to ELYS immobilized on solid support.

The epitope recognized by A300-166A maps to a region between residues 2220 and the C-terminus (residue 2302) of human ELYS transcription factor-like protein TMBS62 using the number given in entry AAN65622.1 (GeneID 25909)

Immunoglobulin concentration was determined using Beer's Law where 1 mg/mL IgG has an A280 of 1.4.

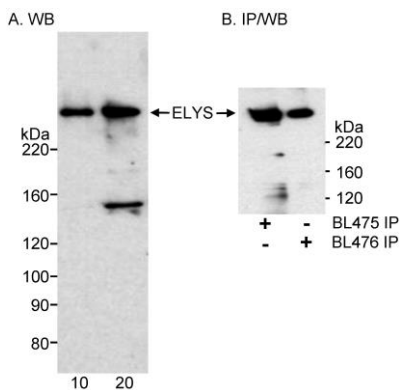
APPLICATIONS Centrifuge tube to remove product from lid. Optimal working dilutions should be determined experimentally by the investigator. Prepare working dilution immediately before use.

Western Blot	1:2000 – 1:10,000 (3-8% Tris-acetate gel recommended)
Immunoprecipitation	6 µg/mg lysate

ADDITIONAL INFO <https://www.fortislife.com/p/A300-166A-T>

Use the link above to view SDS, a current list of citations, and other product specific information.

This document certifies that this product has met all of the quality control standards defined by Bethyl Laboratories, Inc.
Michael Spencer, PhD Date: January 31, 2024



Detection of human ELYS by western blot and immunoprecipitation. *Samples:* Nuclear Extract (10 and 20 µg for WB; 1 mg for IP/WB) from HeLa cells. *Antibodies:* A) Affinity purified rabbit anti-ELYS antibody BL476 (Cat. No. A300-166A) used at 0.5 µg/ml for WB and 4 µg/mg lysate for IP. B) Affinity purified rabbit anti-ELYS antibodies BL476 and BL475 (Cat. No. A300-165A) were each used at 4 µg/mg extract for IP. Immunoprecipitated ELYS was detected by WB using BL475 at 0.2 µg/ml. *Detection:* Chemiluminescence with exposure times of 3 to 5 minutes.