



SZABO SCANDIC

Part of Europa Biosite

Produktinformation



Forschungsprodukte & Biochemikalien



Zellkultur & Verbrauchsmaterial



Diagnostik & molekulare Diagnostik



Laborgeräte & Service

Weitere Information auf den folgenden Seiten!
See the following pages for more information!



Lieferung & Zahlungsart

siehe unsere [Liefer- und Versandbedingungen](#)

Zuschläge

- Mindermengenzuschlag
- Trockeneiszuschlag
- Gefahrgutzuschlag
- Expressversand

SZABO-SCANDIC HandelsgmbH

Quellenstraße 110, A-1100 Wien

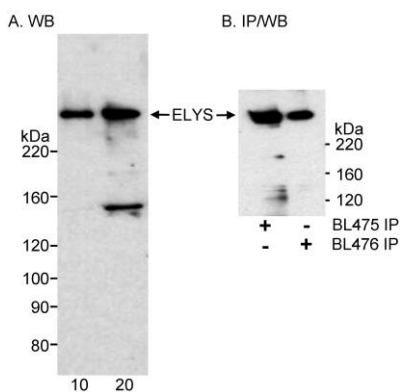
T. +43(0)1 489 3961-0

F. +43(0)1 489 3961-7

mail@szabo-scandic.com

www.szabo-scandic.com

[linkedin.com/company/szaboscandic](https://www.linkedin.com/company/szaboscandic) 



Detection of human ELYS by western blot and immunoprecipitation. *Samples:* Nuclear Extract (10 and 20 µg for WB; 1 mg for IP/WB) from HeLa cells. *Antibodies:* A) Affinity purified rabbit anti-ELYS antibody BL476 (Cat. No. A300-166A) used at 0.5 µg/ml for WB and 4 µg/mg lysate for IP. B) Affinity purified rabbit anti-ELYS antibodies BL476 and BL475 (Cat. No. A300-165A) were each used at 4 µg/mg extract for IP. immunoprecipitatesd ELYS was detected by WB using BL475 at 0.2 µg/ml. *Detection:* Chemiluminescence with exposure times of 3 to 5 minutes.