



# SZABO SCANDIC

Part of Europa Biosite

## Produktinformation



Forschungsprodukte & Biochemikalien



Zellkultur & Verbrauchsmaterial



Diagnostik & molekulare Diagnostik



Laborgeräte & Service

Weitere Information auf den folgenden Seiten!  
See the following pages for more information!



### Lieferung & Zahlungsart

siehe unsere [Liefer- und Versandbedingungen](#)

### Zuschläge

- Mindermengenzuschlag
- Trockeneiszuschlag
- Gefahrgutzuschlag
- Expressversand

### SZABO-SCANDIC HandelsgmbH

Quellenstraße 110, A-1100 Wien

T. +43(0)1 489 3961-0

F. +43(0)1 489 3961-7

[mail@szabo-scandic.com](mailto:mail@szabo-scandic.com)

[www.szabo-scandic.com](http://www.szabo-scandic.com)

[linkedin.com/company/szaboscandic](https://www.linkedin.com/company/szaboscandic) 

# BID Antibody

Rabbit Polyclonal

Antigen Affinity Purified Protein ID NP\_932070.1

Catalog No. A300-168A-T GeneID 637

Lot No. A300-168A-T-3



**APPLICATIONS** WB

**SPECIES REACTIVITY** Human

**AMOUNT** 10  $\mu$ l

**CONCENTRATION** 1000  $\mu$ g/ml

**STORAGE/SHELF LIFE** 2 – 8° C / 1 year from date of receipt

**PHYSICAL STATE** Liquid

**BUFFER** Tris-citrate/phosphate buffer, pH 7 to 8 containing 0.09% Sodium Azide

**ISOTYPE** IgG

**ORIGIN** USA

**PRODUCTION PROCEDURES** Antibody was affinity purified using an epitope specific to human BID immobilized on solid support.. The epitope recognized by A300-168A-T maps to a region between residues 120 and 180 of human BH3 interacting domain death agonist using the numbering given in entry NP\_932070.1 (GeneID 637). The epitope is found in isoforms 1, 2, and 3 of human BID.

Immunoglobulin concentration was determined by extinction coefficient: absorbance at 280 nm of 1.4 equals 1.0 mg of IgG.

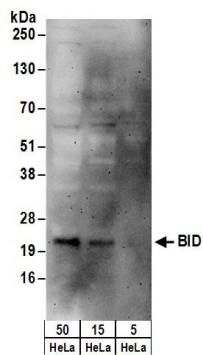
**APPLICATIONS** Centrifuge tube to remove product from lid. Optimal working dilutions should be determined experimentally by the investigator. Prepare working dilution immediately before use.

Western Blot 1:500 – 1:2,500

**APPLICATION NOTES** Western blot of lysates performed using standard western blot reagents and 4–20% SDS-PAGE.

**ADDITIONAL INFO** <https://www.bethyl.com/product/A300-168A-T>  
Use the link above to view SDS, a current list of citations, and other product specific information.

This document certifies that this product has met all of the quality control standards defined by Bethyl Laboratories, Inc.  
Eric McIntush, PhD | Chief Scientific Officer Date: June 21, 2019



**Detection of human BID by western blot.** *Samples:* Whole cell lysate (5, 15 and 50 µg) from HeLa cells. *Antibodies:* Affinity purified rabbit anti-BID antibody A300-168A-T (lot A300-168A-T-3) used for WB at 1 µg/ml. *Detection:* Chemiluminescence with an exposure time of 3 minutes.