



# SZABO SCANDIC

Part of Europa Biosite

## Produktinformation



Forschungsprodukte & Biochemikalien



Zellkultur & Verbrauchsmaterial



Diagnostik & molekulare Diagnostik



Laborgeräte & Service

Weitere Information auf den folgenden Seiten!  
See the following pages for more information!



### Lieferung & Zahlungsart

siehe unsere [Liefer- und Versandbedingungen](#)

### Zuschläge

- Mindermengenzuschlag
- Trockeneiszuschlag
- Gefahrgutzuschlag
- Expressversand

### SZABO-SCANDIC HandelsgmbH

Quellenstraße 110, A-1100 Wien

T. +43(0)1 489 3961-0

F. +43(0)1 489 3961-7

[mail@szabo-scandic.com](mailto:mail@szabo-scandic.com)

[www.szabo-scandic.com](http://www.szabo-scandic.com)

[linkedin.com/company/szaboscandic](https://www.linkedin.com/company/szaboscandic) 

# Rtf1 Antibody

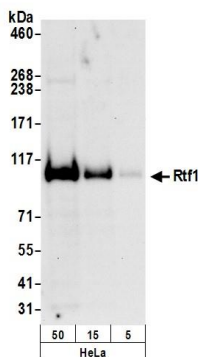
Rabbit Polyclonal

Antigen Affinity Purified      Protein ID    Q92541  
Catalog No.    A300-179A-T      GeneID      23168  
Lot No.      A300-179A-T-1



<b>APPLICATIONS</b>	WB, IP				
<b>SPECIES REACTIVITY</b>	Human				
<b>PRESUMED REACTIVITY</b>	Based on 100% sequence identity, this antibody is predicted to react with Mouse				
<b>AMOUNT</b>	20 µl (2 blots)				
<b>CONCENTRATION</b>	100 µg/ml				
<b>STORAGE/SHELF LIFE</b>	2 - 8° C / 1 year from date of receipt				
<b>PHYSICAL STATE</b>	Liquid				
<b>BUFFER</b>	Tris-buffered Saline containing 0.1% BSA and 0.09% Sodium Azide				
<b>ISOTYPE</b>	IgG				
<b>ORIGIN</b>	USA				
<b>PRODUCTION PROCEDURES</b>	<p>Antibody was affinity purified using an epitope specific to Rtf1 immobilized on solid support.</p> <p>The epitope recognized by A300-179A-T maps to a region between residue 620 and 670 of human Restores TBP (TATA box-binding protein) function-1 using the numbering given in entry EAW92492.1 (GeneID 23168).</p> <p>Immunoglobulin concentration was determined by extinction coefficient: absorbance at 280 nm of 1.4 equals 1.0 mg of IgG.</p>				
<b>APPLICATIONS</b>	<p>Centrifuge tube to remove product from lid. Optimal working dilutions should be determined experimentally by the investigator. Prepare working dilution immediately before use.</p> <table><tr><td>Western Blot</td><td>1:1000</td></tr><tr><td>Immunoprecipitation</td><td>The antibody contained within A300-179A-T has been qualified for use in immunoprecipitation; however, we recommend using the alternative formulation of this antibody found as product A300-179A.</td></tr></table>	Western Blot	1:1000	Immunoprecipitation	The antibody contained within A300-179A-T has been qualified for use in immunoprecipitation; however, we recommend using the alternative formulation of this antibody found as product A300-179A.
Western Blot	1:1000				
Immunoprecipitation	The antibody contained within A300-179A-T has been qualified for use in immunoprecipitation; however, we recommend using the alternative formulation of this antibody found as product A300-179A.				
<b>APPLICATION NOTES</b>	<p>Western blot of immunoprecipitates performed using Normal Pig Serum (Cat. No. S100-020), Goat anti-Rabbit Light Chain HRP Conjugate (Cat. No. A120-113P) and 4-8% SDS-PAGE (link to IP-western blot protocol in Additional Info section below).</p> <p>Western blot of lysates performed using standard western blot reagents and 4-8% SDS-PAGE.</p>				
<b>ADDITIONAL INFO</b>	<p><a href="https://www.bethyl.com/product/A300-179A-T">https://www.bethyl.com/product/A300-179A-T</a></p> <p>Use the link above to view SDS, a current list of citations, and other product specific information.</p> <p>IP-western blot protocol: <a href="https://www.bethyl.com/content/protocol_IP_WB">https://www.bethyl.com/content/protocol_IP_WB</a></p>				

This document certifies that this product has met all of the quality control standards defined by Bethyl Laboratories, Inc.  
Eric McIntush, PhD | Chief Scientific Officer      Date: June 21, 2019



**Detection of human Rtf1 by western blot.** *Samples:* Whole cell lysate (5, 15 and 50 µg) from HeLa cells prepared using NETN lysis buffer. *Antibody:* Affinity purified rabbit anti-Rtf1 antibody A300-179A-T (lot A300-179A-T-1) used for WB at 0.1 µg/ml. *Detection:* Chemiluminescence with an exposure time of 30 seconds.