



SZABO SCANDIC

Part of Europa Biosite

Produktinformation



Forschungsprodukte & Biochemikalien



Zellkultur & Verbrauchsmaterial



Diagnostik & molekulare Diagnostik



Laborgeräte & Service

Weitere Information auf den folgenden Seiten!
See the following pages for more information!



Lieferung & Zahlungsart

siehe unsere [Liefer- und Versandbedingungen](#)

Zuschläge

- Mindermengenzuschlag
- Trockeneiszuschlag
- Gefahrgutzuschlag
- Expressversand

SZABO-SCANDIC HandelsgmbH

Quellenstraße 110, A-1100 Wien

T. +43(0)1 489 3961-0

F. +43(0)1 489 3961-7

mail@szabo-scandic.com

www.szabo-scandic.com

[linkedin.com/company/szaboscandic](https://www.linkedin.com/company/szaboscandic) 

PELP1 /MNAR Antibody

Rabbit Polyclonal

Antigen Affinity Purified

Protein ID AAN41255.1

Catalog No. A300-180A

GeneID 27043

Lot No. A300-180A-4



APPLICATIONS	WB, IP, IHC
SPECIES REACTIVITY	Human, Mouse
AMOUNT	100 µl
CONCENTRATION	1000 µg/ml
STORAGE/SHELF LIFE	2 - 8° C / 1 year from date of receipt
PHYSICAL STATE	Liquid
BUFFER	Tris-citrate/phosphate buffer, pH 7 to 8 containing 0.09% Sodium Azide
ISOTYPE	IgG
ORIGIN	USA
PRODUCTION PROCEDURES	Antibody was affinity purified using an epitope specific to PELP1 /MNAR immobilized on solid support.

The epitope recognized by A300-180A maps to a region between residues 1000 and 1050 of human proline-, glutamic acid-, leucine-rich protein 1/ modulator of nongenomic activity of estrogen receptor using the numbering given in entry AAN41255.1 (GeneID 27043).

Immunoglobulin concentration was determined by extinction coefficient: absorbance at 280 nm of 1.4 equals 1.0 mg of IgG.

APPLICATIONS Centrifuge tube to remove product from lid. Optimal working dilutions should be determined experimentally by the investigator. Prepare working dilution immediately before use.

Western Blot 1:2,000 – 1:10,000

Immunoprecipitation 2 – 10 µg/mg lysate

Immunohistochemistry 1:1,000 to 1:5,000. Epitope retrieval with citrate buffer pH6.0 is recommended for FFPE tissue sections.

APPLICATION NOTES Western blot of immunoprecipitates performed using Normal Pig Serum (Cat. No. S100-020), Goat anti-Rabbit Light Chain HRP Conjugate (Cat. No. A120-113P) and 4-8% SDS-PAGE (link to IP-western blot protocol in Additional Info section below).

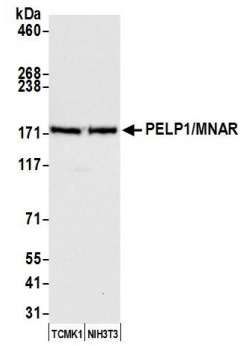
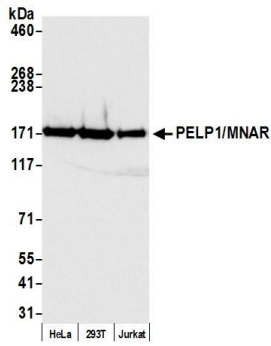
IHC HUMAN CONTROLS Western blot of lysates performed using standard western blot reagents and 4-8% SDS-PAGE. Breast Carcinoma, Colon Carcinoma, Ovarian Carcinoma, Stomach Adenocarcinoma, Testicular Seminoma

IHC MOUSE CONTROLS Renal Cell Carcinoma, Teratoma

ADDITIONAL INFO <https://www.bethyl.com/product/A300-180A>

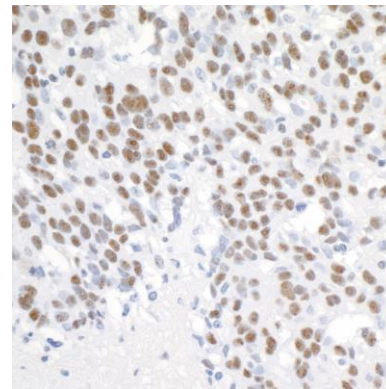
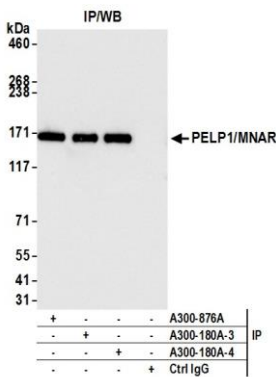
Use the link above to view SDS, a current list of citations, and other product specific information. IP-western blot protocol https://www.bethyl.com/content/protocol_IP_WB

This document certifies that this product has met all of the quality control standards defined by Bethyl Laboratories, Inc.
Eric McIntush, PhD | Chief Scientific Officer Date: December 20, 2019



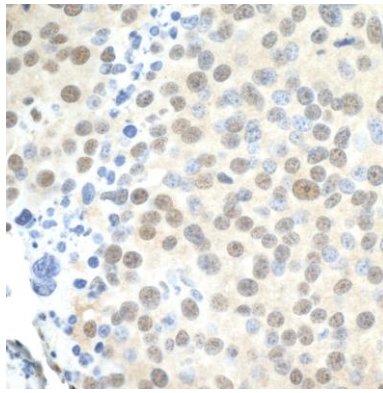
Detection of human PELP1/MNAR by western blot.
Samples: Whole cell lysate (50 µg) from HeLa, HEK293T, and Jurkat cells prepared using NETN lysis buffer.
Antibody: Affinity purified rabbit anti-PELP1/MNAR antibody A300-180A (lot A300-180A-4) used for WB at 0.04 µg/ml.
Detection: Chemiluminescence with an exposure time of 3 seconds.

Detection of mouse PELP1/MNAR by western blot.
Samples: Whole cell lysate (50 µg) from TCMK-1 and NIH 3T3 cells prepared using NETN lysis buffer.
Antibody: Affinity purified rabbit anti-PELP1/MNAR antibody A300-180A (lot A300-180A-4) used for WB at 0.04 µg/ml.
Detection: Chemiluminescence with an exposure time of 10 seconds.



Detection of human PELP1/MNAR by western blot of immunoprecipitates.
Samples: Whole cell lysate (1.0 mg per IP reaction; 20% of IP loaded) from HeLa cells prepared using NETN lysis buffer.
Antibodies: Affinity purified rabbit anti-PELP1/MNAR antibody A300-180A (lot A300-180A-4) used for IP at 6 µg per reaction. PELP1/MNAR was also immunoprecipitated by a previous lot of this antibody (lot A300-180A-3) and rabbit anti-PELP1/MNAR antibody A300-876A. For blotting immunoprecipitated PELP1/MNAR, A300-180A was used at 0.04 µg/ml.
Detection: Chemiluminescence with an exposure time of 1 second.

Detection of human PELP1/MNAR by immunohistochemistry.
Samples: FFPE sections of human ovarian carcinoma.
Antibodies: Affinity purified rabbit anti-PELP1/MNAR Cat. No. A300-180A lot 4 used at a dilution of 1:5,000 (0.2µg/ml).
Detection: DAB



Detection of mouse PELP1/MNAR by immunohistochemistry. *Samples:* FFPE sections of mouse renal cell carcinoma. *Antibodies:* Affinity purified rabbit anti-PELP1/MNAR Cat. No. A300-180A lot 4 used at a dilution of 1:1,000 (1 µg/ml). *Detection:* DAB