



SZABO SCANDIC

Part of Europa Biosite

Produktinformation



Forschungsprodukte & Biochemikalien



Zellkultur & Verbrauchsmaterial



Diagnostik & molekulare Diagnostik



Laborgeräte & Service

Weitere Information auf den folgenden Seiten!
See the following pages for more information!



Lieferung & Zahlungsart

siehe unsere [Liefer- und Versandbedingungen](#)

Zuschläge

- Mindermengenzuschlag
- Trockeneiszuschlag
- Gefahrgutzuschlag
- Expressversand

SZABO-SCANDIC HandelsgmbH

Quellenstraße 110, A-1100 Wien

T. +43(0)1 489 3961-0

F. +43(0)1 489 3961-7

mail@szabo-scandic.com

www.szabo-scandic.com

[linkedin.com/company/szaboscandic](https://www.linkedin.com/company/szaboscandic) 

Rad50 Antibody

Rabbit Polyclonal

Antigen Affinity Purified	RefSeq ID	NP_005723.2
Catalog No. A300-184A-T	Uniprot ID	Q92878
Lot No. 1	GeneID	10111

APPLICATIONS	WB, IP
SPECIES REACTIVITY	Human
PRESUMED REACTIVITY	Based on 100% sequence identity, this antibody is predicted to react with Mouse and Rat
AMOUNT	10 µl
CONCENTRATION	1000 µg/ml
STORAGE/SHELF LIFE	2 – 8°C / 1 year from date of receipt
PHYSICAL STATE	Liquid
BUFFER	Tris-citrate/phosphate buffer, pH 7 to 8 containing 0.09% Sodium Azide
ISOTYPE	IgG
ORIGIN	USA
PRODUCTION PROCEDURES	Antibody was affinity purified using an epitope specific to Rad50 immobilized on solid support.

The epitope recognized by A300-184A maps to a region between residues 50 and 100 of human Rad50 using the numbering given in entry NP_005723.2 (GeneID 10111).

Immunoglobulin concentration was determined using Beer's Law where 1mg/mL IgG has an A280 of 1.4.

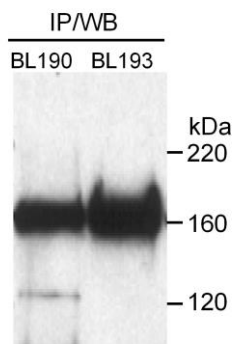
APPLICATIONS Centrifuge tube to remove product from lid. Optimal working dilutions should be determined experimentally by the investigator. Prepare working dilution immediately before use.

Western Blot	1:1000 – 1:5000
Immunoprecipitation	6 µg/mg lysate

ADDITIONAL INFO <https://www.fortislife.com/p/A300-184A-T>

Use the link above to view SDS, a current list of citations, and other product specific information.

This document certifies that this product has met all of the quality control standards defined by Bethyl Laboratories, Inc.
Michael Spencer, PhD Date: January 31, 2024



Detection of human Rad50 by immunoprecipitation and western blot. *Sample:* Nuclear extract (1 mg) from HeLa cells. *Antibodies:* Affinity purified rabbit anti-Rad50 (Cat. No. A300-184A) used at 0.25 $\mu\text{g}/\text{ml}$ for WB of Rad50 immunoprecipitated by 1.25 μg of affinity purified rabbit anti-Rad50 (BL190) or affinity purified rabbit anti-Rad50 (BL193; Cat. No. A300-185A). *Detection:* Chemiluminescence.