



SZABO SCANDIC

Part of Europa Biosite

Produktinformation



Forschungsprodukte & Biochemikalien



Zellkultur & Verbrauchsmaterial



Diagnostik & molekulare Diagnostik



Laborgeräte & Service

Weitere Information auf den folgenden Seiten!
See the following pages for more information!



Lieferung & Zahlungsart

siehe unsere [Liefer- und Versandbedingungen](#)

Zuschläge

- Mindermengenzuschlag
- Trockeneiszuschlag
- Gefahrgutzuschlag
- Expressversand

SZABO-SCANDIC HandelsgmbH

Quellenstraße 110, A-1100 Wien

T. +43(0)1 489 3961-0

F. +43(0)1 489 3961-7

mail@szabo-scandic.com

www.szabo-scandic.com

[linkedin.com/company/szaboscandic](https://www.linkedin.com/company/szaboscandic) 

Rad50 Antibody

Rabbit Polyclonal

Antigen Affinity Purified

Protein ID NP_005723.2

Catalog No. A300-185A-T

GeneID 10111

Lot No. A300-185A-T-1



APPLICATIONS	WB, IHC
SPECIES REACTIVITY	Human
AMOUNT	20 µl (2 blots)
CONCENTRATION	200 µg/ml
STORAGE/SHELF LIFE	2 - 8° C / 1 year from date of receipt
PHYSICAL STATE	Liquid
BUFFER	Tris-buffered Saline containing 0.1% BSA and 0.09% Sodium Azide
ISOTYPE	IgG
ORIGIN	USA

PRODUCTION PROCEDURES Antibody was affinity purified using an epitope specific to Rad50 immobilized on solid support. The epitope recognized by A300-185A-T maps to a region between residues 700 and 750 of human Rad50 using the numbering given in entry NP_005723.2 (GeneID 10111). Immunoglobulin concentration was determined by extinction coefficient: absorbance at 280 nm of 1.4 equals 1.0 mg of IgG.

APPLICATIONS Centrifuge tube to remove product from lid. Optimal working dilutions should be determined experimentally by the investigator. Prepare working dilution immediately before use.

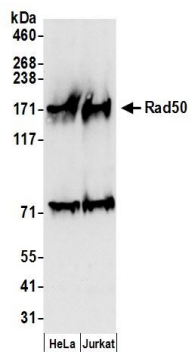
Western Blot	1:1000
Immunohistochemistry	1:100 - 1:400. Epitope retrieval with citrate buffer pH 6.0 is recommended for FFPE tissue sections.

APPLICATION NOTES Western blot of immunoprecipitates performed using Normal Pig Serum (Cat. No. S100-020), Goat anti-Rabbit Light Chain HRP Conjugate (Cat. No. A120-113P) and 4-8% SDS-PAGE (link to IP-western blot protocol in Additional Info section below).

Western blot of lysates performed using standard western blot reagents and 4-8% SDS-PAGE.

ADDITIONAL INFO <https://www.bethyl.com/product/A300-185A-T>
Use the link above to view SDS, a current list of citations, and other product specific information.
IP-western blot protocol: https://www.bethyl.com/content/protocol_IP_WB

This document certifies that this product has met all of the quality control standards defined by Bethyl Laboratories, Inc.
Eric McIntush, PhD | Chief Scientific Officer Date: June 21, 2019



Detection of human Rad50 by western blot. *Samples:* Whole cell lysate (50 μ g) from HeLa and Jurkat cells prepared using NETN lysis buffer. *Antibody:* Affinity purified rabbit anti-Rad50 antibody A300-185A-T (lot A300-185A-T-1) used at 1:1000. *Detection:* Chemiluminescence with an exposure time of 3 seconds.