



# SZABO SCANDIC

Part of Europa Biosite

## Produktinformation



Forschungsprodukte & Biochemikalien



Zellkultur & Verbrauchsmaterial



Diagnostik & molekulare Diagnostik



Laborgeräte & Service

Weitere Information auf den folgenden Seiten!  
See the following pages for more information!



### Lieferung & Zahlungsart

siehe unsere [Liefer- und Versandbedingungen](#)

### Zuschläge

- Mindermengenzuschlag
- Trockeneiszuschlag
- Gefahrgutzuschlag
- Expressversand

### SZABO-SCANDIC HandelsgmbH

Quellenstraße 110, A-1100 Wien

T. +43(0)1 489 3961-0

F. +43(0)1 489 3961-7

[mail@szabo-scandic.com](mailto:mail@szabo-scandic.com)

[www.szabo-scandic.com](http://www.szabo-scandic.com)

[linkedin.com/company/szaboscandic](https://www.linkedin.com/company/szaboscandic) 

# MCM4 Antibody

Rabbit Polyclonal

Antigen Affinity Purified

Protein ID NP\_005905.2

Catalog No. A300-193A

GeneID 4173

Lot No. A300-193A-2



<b>APPLICATIONS</b>	WB, IHC
<b>SPECIES REACTIVITY</b>	Human, Mouse
<b>AMOUNT</b>	100 µl
<b>CONCENTRATION</b>	1000 µg/ml
<b>STORAGE/SHELF LIFE</b>	2 - 8° C / 1 year from date of receipt
<b>PHYSICAL STATE</b>	Liquid
<b>BUFFER</b>	Tris-citrate/phosphate buffer, pH 7 to 8 containing 0.09% Sodium Azide
<b>ISOTYPE</b>	IgG
<b>ORIGIN</b>	USA
<b>PRODUCTION PROCEDURES</b>	Antibody was affinity purified using an epitope specific to MCM4 immobilized on solid support.

The epitope recognized by A300-193A maps to a region between residues 750 and 800 of human Minichromosome Maintenance 4 using the numbering given in entry NP\_005905.2 (GeneID 4173).

Immunoglobulin concentration was determined by extinction coefficient: absorbance at 280 nm of 1.4 equals 1.0 mg of IgG.

**APPLICATIONS** Centrifuge tube to remove product from lid. Optimal working dilutions should be determined experimentally by the investigator. Prepare working dilution immediately before use.

Western Blot 1:2,000 - 1:10,000

Immunoprecipitation Not recommended. Use rabbit anti-MCM4 antibody A300-191A or A300-195A.

Immunohistochemistry 1:500 - 1:2,000. Epitope retrieval with citrate buffer pH 6.0 is recommended for FFPE tissue sections.

**APPLICATION NOTES** Western blot of lysates performed using standard western blot reagents and 4-8% SDS-PAGE.

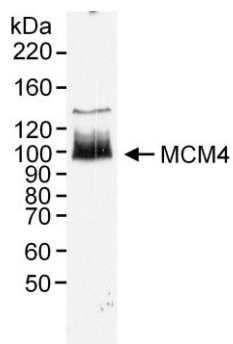
**IHC HUMAN CONTROLS** Ovarian Carcinoma, Small Cell Lung Cancer, Testicular Seminoma

**IHC MOUSE CONTROLS** Squamous Cell Carcinoma

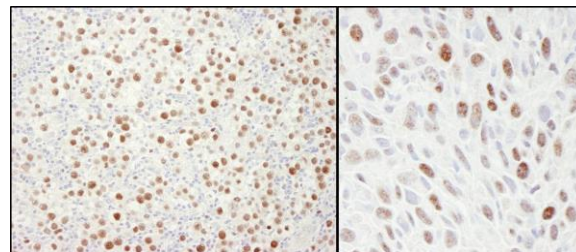
**ADDITIONAL INFO** <https://www.bethyl.com/product/A300-193A>

Use the link above to view SDS, a current list of citations, and other product specific information.

This document certifies that this product has met all of the quality control standards defined by Bethyl Laboratories, Inc.  
Eric McIntush, PhD | Chief Scientific Officer Date: June 21, 2019



**Detection of human MCM4 by western blot.** *Sample:* RIPA extract (50  $\mu$ g) from HeLa cells. *Antibody:* Affinity purified rabbit anti-MCM4 (Cat. No. A300-193A) used at 0.2  $\mu$ g/ml. *Detection:* Chemiluminescence.



**Detection of human and mouse MCM4 by immunohistochemistry.** *Sample:* FFPE section of human testicular seminoma (left) and mouse squamous cell carcinoma (right). *Antibody:* Affinity purified rabbit anti-MCM4 (Cat. No. A300-193A Lot2) used at a dilution of 1:1,000 (1  $\mu$ g/ml). *Detection:* DAB