



SZABO SCANDIC

Part of Europa Biosite

Produktinformation



Forschungsprodukte & Biochemikalien



Zellkultur & Verbrauchsmaterial



Diagnostik & molekulare Diagnostik



Laborgeräte & Service

Weitere Information auf den folgenden Seiten!
See the following pages for more information!



Lieferung & Zahlungsart

siehe unsere [Liefer- und Versandbedingungen](#)

Zuschläge

- Mindermengenzuschlag
- Trockeneiszuschlag
- Gefahrgutzuschlag
- Expressversand

SZABO-SCANDIC HandelsgmbH

Quellenstraße 110, A-1100 Wien

T. +43(0)1 489 3961-0

F. +43(0)1 489 3961-7

mail@szabo-scandic.com

www.szabo-scandic.com

[linkedin.com/company/szaboscandic](https://www.linkedin.com/company/szaboscandic) 

MCM6 Antibody

Rabbit Polyclonal

Antigen Affinity Purified

Protein ID NP_005906.2

Catalog No. A300-194A

GeneID 4175

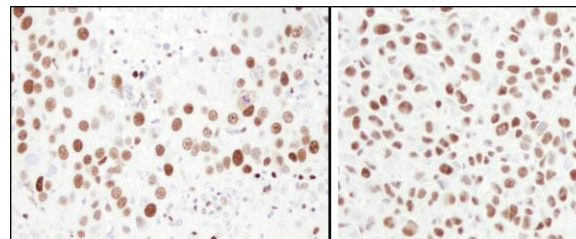
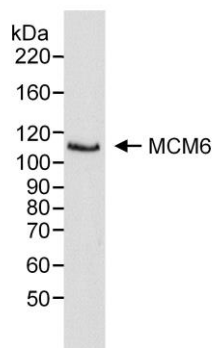
Lot No. A300-194A-2



APPLICATIONS	WB, IHC						
SPECIES REACTIVITY	Human, Mouse						
PRESUMED REACTIVITY	Based on 100% sequence identity, this antibody is predicted to react with Bovine						
AMOUNT	100 µl						
CONCENTRATION	1000 µg/ml						
STORAGE/SHELF LIFE	2 - 8° C / 1 year from date of receipt						
PHYSICAL STATE	Liquid						
BUFFER	Tris-citrate/phosphate buffer, pH 7 to 8 containing 0.09% Sodium Azide						
ISOTYPE	IgG						
ORIGIN	USA						
PRODUCTION PROCEDURES	<p>Antibody was affinity purified using an epitope specific to MCM6 immobilized on solid support.</p> <p>The epitope recognized by A300-194A maps to a region between residue 775 and the C-terminus (residue 821) of human Minichromosome Maintenance 6 using the numbering given in entry NP_005906.2 (GeneID 4175).</p> <p>Immunoglobulin concentration was determined by extinction coefficient: absorbance at 280 nm of 1.4 equals 1.0 mg of IgG.</p>						
APPLICATIONS	<p>Centrifuge tube to remove product from lid. Optimal working dilutions should be determined experimentally by the investigator. Prepare working dilution immediately before use.</p> <table><tr><td>Western Blot</td><td>1:2,000 - 1:10,000</td></tr><tr><td>Immunoprecipitation</td><td>Not recommended. Use rabbit anti-MCM6 antibody A300-191A or A300-195A.</td></tr><tr><td>Immunohistochemistry</td><td>1:1,000 - 1:5,000. Epitope retrieval with citrate buffer pH 6.0 is recommended for FFPE tissue sections.</td></tr></table>	Western Blot	1:2,000 - 1:10,000	Immunoprecipitation	Not recommended. Use rabbit anti-MCM6 antibody A300-191A or A300-195A.	Immunohistochemistry	1:1,000 - 1:5,000. Epitope retrieval with citrate buffer pH 6.0 is recommended for FFPE tissue sections.
Western Blot	1:2,000 - 1:10,000						
Immunoprecipitation	Not recommended. Use rabbit anti-MCM6 antibody A300-191A or A300-195A.						
Immunohistochemistry	1:1,000 - 1:5,000. Epitope retrieval with citrate buffer pH 6.0 is recommended for FFPE tissue sections.						
APPLICATION NOTES	Western blot of lysates performed using standard western blot reagents and 4-8% SDS-PAGE.						
IHC HUMAN CONTROLS	Breast Carcinoma, Colon Carcinoma, Ovarian Carcinoma						
IHC MOUSE CONTROLS	Squamous Cell Carcinoma						
ADDITIONAL INFO	<p>https://www.bethyl.com/product/A300-194A</p> <p>Use the link above to view SDS, a current list of citations, and other product specific information.</p>						

This document certifies that this product has met all of the quality control standards defined by Bethyl Laboratories, Inc.
Eric McIntush, PhD | Chief Scientific Officer

Date: June 21, 2019



Detection of human MCM6 by western blot. *Sample:* RIPA extract (50 μ g) from HeLa cells. *Antibody:* Affinity purified rabbit anti-MCM6 (Cat. No. A300-194A) used at 0.2 μ g/ml. *Detection:* Chemiluminescence.

Detection of human and mouse MCM6 by immunohistochemistry. *Sample:* FFPE section of human breast carcinoma (left) and mouse squamous cell carcinoma (right). *Antibody:* Affinity purified rabbit anti-MCM6 (Cat. No. A300-194A Lot2) used at a dilution of 1:1,000 (1 μ g/ml). *Detection:* DAB