



SZABO SCANDIC

Part of Europa Biosite

Produktinformation



Forschungsprodukte & Biochemikalien



Zellkultur & Verbrauchsmaterial



Diagnostik & molekulare Diagnostik



Laborgeräte & Service

Weitere Information auf den folgenden Seiten!
See the following pages for more information!



Lieferung & Zahlungsart

siehe unsere [Liefer- und Versandbedingungen](#)

Zuschläge

- Mindermengenzuschlag
- Trockeneiszuschlag
- Gefahrgutzuschlag
- Expressversand

SZABO-SCANDIC HandelsgmbH

Quellenstraße 110, A-1100 Wien

T. +43(0)1 489 3961-0

F. +43(0)1 489 3961-7

mail@szabo-scandic.com

www.szabo-scandic.com

[linkedin.com/company/szaboscandic](https://www.linkedin.com/company/szaboscandic) 

CKII alpha' Antibody

Rabbit Polyclonal

Antigen Affinity Purified	RefSeq ID	NP_001887.1
Catalog No. A300-199A-T	Uniprot ID	P19784
Lot No. A300-199A-T-6	GeneID	1459

APPLICATIONS	WB, IP
SPECIES REACTIVITY	Human, Mouse
PRESUMED REACTIVITY	Based on 100% sequence identity, this antibody is predicted to react with Bovine
AMOUNT	10 µl
CONCENTRATION	1000 µg/ml
STORAGE/SHELF LIFE	2 - 8°C / 1 year from date of receipt
PHYSICAL STATE	Liquid
BUFFER	Tris-citrate/phosphate buffer, pH 7 to 8 containing 0.09% Sodium Azide
ISOTYPE	IgG
ORIGIN	USA
PRODUCTION PROCEDURES	Antibody was affinity purified using an epitope specific to CKII alpha' immobilized on solid support.

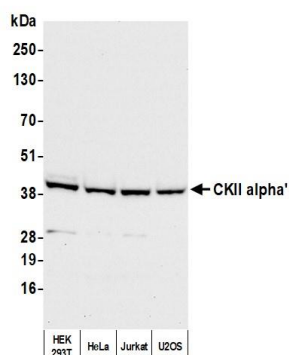
The epitope recognized by A300-199A-T maps to a region between residue 300 and the C-terminus (residue 350) of human Casein Kinase 2, alpha 2 using the numbering given in entry NP_001887.1 (GeneID 1459).

APPLICATIONS Centrifuge tube to remove product from lid. Optimal working dilutions should be determined experimentally by the investigator. Prepare working dilution immediately before use.

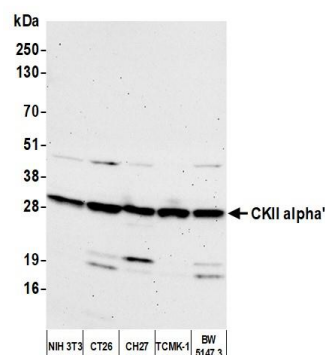
Western Blot	1:2,000 - 1:10,000
Immunoprecipitation	2 - 10 µg/mg lysate

ADDITIONAL INFO <https://www.fortislife.com/p/A300-199A-T>
Use the link above to view SDS, a current list of citations, and other product specific information.

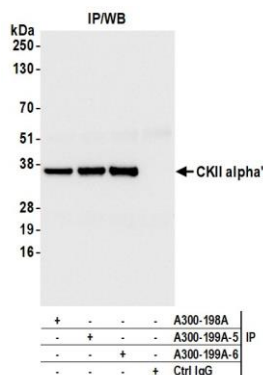
This document certifies that this product has met all of the quality control standards defined by Bethyl Laboratories, Inc.
Michael Spencer, PhD Date: September 15, 2022



Detection of human CKII alpha' by western blot. *Samples:* Whole cell lysate (25 µg) from HEK293T, HeLa, Jurkat, and U2OS cells prepared using NETN lysis buffer. *Antibody:* Affinity purified rabbit anti-CKII alpha' antibody (A300-199A lot 6) used for WB at 0.1 µg/ml. *Detection:* Chemiluminescence with an exposure time of 10 seconds.



Detection of mouse CKII alpha' by western blot. *Samples:* Whole cell lysate (25 µg) from NIH 3T3, CT26, CH27, TCMK-1, and BW5147.3 cells prepared using NETN lysis buffer. *Antibody:* Affinity purified rabbit anti-CKII alpha' antibody (A300-199A lot 6) used for WB at 0.1 µg/ml. *Detection:* Chemiluminescence with an exposure time of 75 seconds.



Detection of human CKII alpha' by western blot of immunoprecipitates. *Samples:* Whole cell lysate (1.0 mg per IP reaction; 20% of IP loaded) from HEK293T cells prepared using NETN lysis buffer. *Antibodies:* Affinity purified rabbit anti-CKII alpha' antibody (A300-199A lot 6) used for IP at 6 µg per reaction. CKII alpha' was also immunoprecipitated by a previous lot of this antibody (A300-199A lot 5) and a second antibody against a different epitope of CKII alpha' (A300-198A). For blotting immunoprecipitated CKII alpha', A300-199A was used at 0.1 µg/ml. *Detection:* Chemiluminescence with an exposure time of 1 second.