



# SZABO SCANDIC

Part of Europa Biosite

## Produktinformation



Forschungsprodukte & Biochemikalien



Zellkultur & Verbrauchsmaterial



Diagnostik & molekulare Diagnostik



Laborgeräte & Service

Weitere Information auf den folgenden Seiten!  
See the following pages for more information!



### Lieferung & Zahlungsart

siehe unsere [Liefer- und Versandbedingungen](#)

### Zuschläge

- Mindermengenzuschlag
- Trockeneiszuschlag
- Gefahrgutzuschlag
- Expressversand

### SZABO-SCANDIC HandelsgmbH

Quellenstraße 110, A-1100 Wien

T. +43(0)1 489 3961-0

F. +43(0)1 489 3961-7

[mail@szabo-scandic.com](mailto:mail@szabo-scandic.com)

[www.szabo-scandic.com](http://www.szabo-scandic.com)

[linkedin.com/company/szaboscandic](https://www.linkedin.com/company/szaboscandic) 

# Matriptase/ST14 Antibody

Rabbit Polyclonal

Antigen Affinity Purified	RefSeq ID	NP_068813.1
Catalog No. A300-221A-T	Uniprot ID	Q9Y5Y6
Lot No. A300-221A-T-3	GeneID	6768

**APPLICATIONS** WB, IP

**SPECIES REACTIVITY** Human

**AMOUNT** 10 µl

**CONCENTRATION** 1000 µg/ml

**STORAGE/SHELF LIFE** 2 – 8°C / 1 year from date of receipt

**PHYSICAL STATE** Liquid

**BUFFER** Tris-citrate/phosphate buffer, pH 7 to 8 containing 0.09% Sodium Azide

**ISOTYPE** IgG

**ORIGIN** USA

**PRODUCTION PROCEDURES** Antibody was affinity purified using an epitope specific to Matriptase/ST14 immobilized on solid support.

The epitope recognized by A300-221A-T maps to a region between residues 800 and the C-terminus (residue 855) of human Membrane-type serine protease 1 using the numbering given in SwissProt entry Q9Y5Y6 (GeneID 6768).

Immunoglobulin concentration was determined by extinction coefficient: absorbance at 280 nm of 1.4 equals 1.0 mg of IgG.

**APPLICATIONS** Centrifuge tube to remove product from lid. Optimal working dilutions should be determined experimentally by the investigator. Prepare working dilution immediately before use.

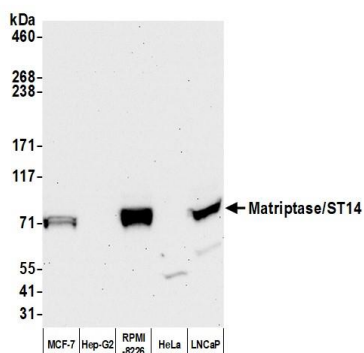
Western Blot 1:10,000 – 1:25,000

Immunoprecipitation 2 – 10 µg/mg lysate

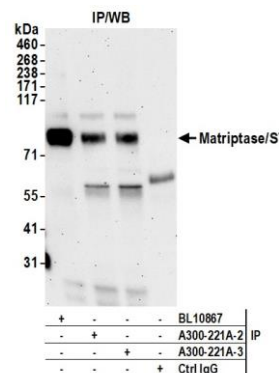
**ADDITIONAL INFO** <https://www.fortislife.com/p/A300-221A-T>

Use the link above to view SDS, a current list of citations, and other product specific information.

This document certifies that this product has met all of the quality control standards defined by Bethyl Laboratories, Inc.  
Michael Spencer, PhD Date: November 15, 2022



**Detection of human Matriptase/ST14 by western blot.**  
*Samples:* Whole cell lysate (50 µg) from MCF-7, Hep-G2, RPMI-8226, HeLa, and LNCaP cells prepared using NETN lysis buffer. *Antibody:* Affinity purified rabbit anti-Matriptase/ST14 antibody (A300-221A lot 3) used for WB at 0.4 µg/ml. *Detection:* Chemiluminescence with an exposure time of 30 seconds.



**Detection of human Matriptase/ST14 by western blot of immunoprecipitates.** *Samples:* Whole cell lysate (1.0 mg per IP reaction; 10% of IP loaded) from RPMI-8226 cells prepared using NETN lysis buffer. *Antibodies:* Affinity purified rabbit anti-Matriptase/ST14 antibody (A300-221A lot 3) used for IP at 6 µg per reaction. Matriptase/ST14 was also immunoprecipitated by a previous lot of this antibody (A300-221A lot 2) and a second antibody against a different epitope of Matriptase/ST14 (BL10867). For blotting immunoprecipitated Matriptase/ST14, A300-221A was used at 0.4 µg/ml. *Detection:* Chemiluminescence with an exposure time of 75 seconds.