



# SZABO SCANDIC

Part of Europa Biosite

## Produktinformation



Forschungsprodukte & Biochemikalien



Zellkultur & Verbrauchsmaterial



Diagnostik & molekulare Diagnostik



Laborgeräte & Service

Weitere Information auf den folgenden Seiten!  
See the following pages for more information!



### Lieferung & Zahlungsart

siehe unsere [Liefer- und Versandbedingungen](#)

### Zuschläge

- Mindermengenzuschlag
- Trockeneiszuschlag
- Gefahrgutzuschlag
- Expressversand

### SZABO-SCANDIC HandelsgmbH

Quellenstraße 110, A-1100 Wien

T. +43(0)1 489 3961-0

F. +43(0)1 489 3961-7

[mail@szabo-scandic.com](mailto:mail@szabo-scandic.com)

[www.szabo-scandic.com](http://www.szabo-scandic.com)

[linkedin.com/company/szaboscandic](https://www.linkedin.com/company/szaboscandic) 

# MerTK/c-mer Antibody

Rabbit Polyclonal

Antigen Affinity Purified

Protein ID Q12866

Catalog No. A300-222A-T

GeneID 10461

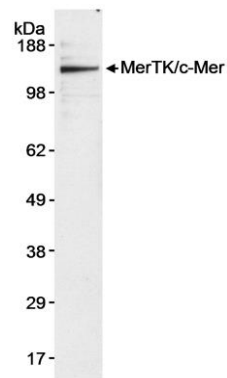
Lot No. A300-222A-T-1



<b>APPLICATIONS</b>	WB
<b>SPECIES REACTIVITY</b>	Human
<b>AMOUNT</b>	20 µl (2 blots)
<b>CONCENTRATION</b>	200 µg/ml
<b>STORAGE/SHELF LIFE</b>	2 - 8° C / 1 year from date of receipt
<b>PHYSICAL STATE</b>	Liquid
<b>BUFFER</b>	Tris-buffered Saline containing 0.1% BSA and 0.09% Sodium Azide
<b>ISOTYPE</b>	IgG
<b>ORIGIN</b>	USA
<b>PRODUCTION PROCEDURES</b>	Antibody was affinity purified using an epitope specific to MerTK/c-Mer immobilized on solid support.  The epitope recognized by A300-222A-T maps to a region between residues 200 and 250 of human c-mer proto-oncogene tyrosine kinase using the numbering given in SwissProt entry Q12866 (GeneID 10461).
<b>APPLICATIONS</b>	Centrifuge tube to remove product from lid. Optimal working dilutions should be determined experimentally by the investigator. Prepare working dilution immediately before use.  Western Blot 1:1000
<b>APPLICATION NOTES</b>	Western blot of lysates performed using standard western blot reagents and 4-8% SDS-PAGE.
<b>ADDITIONAL INFO</b>	<a href="https://www.bethyl.com/product/A300-222A-T">https://www.bethyl.com/product/A300-222A-T</a> Use the link above to view SDS, a current list of citations, and other product specific information.

This document certifies that this product has met all of the quality control standards defined by Bethyl Laboratories, Inc.  
Eric McIntush, PhD | Chief Scientific Officer

Date: June 21, 2019

**Detection of human MerTK/c-Mer by western blot.**

*Samples:* Whole cell lysate (50 µg) from U937 cells.

*Antibody:* Affinity purified rabbit anti-MerTK/c-Mer antibody (Cat. No. A300-222A-T) used for WB at 1:1000.

*Detection:* Chemiluminescence with an exposure time of 5 minutes.