



SZABO SCANDIC

Part of Europa Biosite

Produktinformation



Forschungsprodukte & Biochemikalien



Zellkultur & Verbrauchsmaterial



Diagnostik & molekulare Diagnostik



Laborgeräte & Service

Weitere Information auf den folgenden Seiten!
See the following pages for more information!



Lieferung & Zahlungsart

siehe unsere [Liefer- und Versandbedingungen](#)

Zuschläge

- Mindermengenzuschlag
- Trockeneiszuschlag
- Gefahrgutzuschlag
- Expressversand

SZABO-SCANDIC HandelsgmbH

Quellenstraße 110, A-1100 Wien

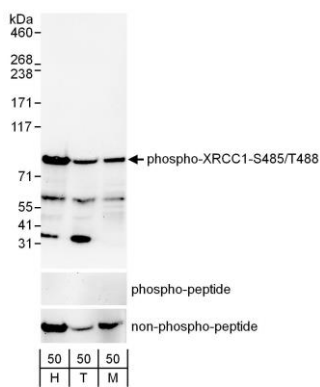
T. +43(0)1 489 3961-0

F. +43(0)1 489 3961-7

mail@szabo-scandic.com

www.szabo-scandic.com

[linkedin.com/company/szaboscandic](https://www.linkedin.com/company/szaboscandic) 



Detection of human and mouse Phospho-XRCC1-S485/T488 by western blot. *Samples:* Whole cell lysate (50 µg) from asynchronously growing HeLa (H), HEK293T (T) and mouse NIH-3T3 (M) cells. *Antibody:* Affinity purified rabbit anti-Phospho-XRCC1-S485/T488 antibody A300-231A-T used at 1:1000. The binding of the antibody was blocked by pre-incubation with the phospho-peptide but was not blocked by pre-incubation with the non-phosphorylated peptide. *Detection:* Chemiluminescence with an exposure time of 30 seconds.