



SZABO SCANDIC

Part of Europa Biosite

Produktinformation



Forschungsprodukte & Biochemikalien



Zellkultur & Verbrauchsmaterial



Diagnostik & molekulare Diagnostik



Laborgeräte & Service

Weitere Information auf den folgenden Seiten!
See the following pages for more information!



Lieferung & Zahlungsart

siehe unsere [Liefer- und Versandbedingungen](#)

Zuschläge

- Mindermengenzuschlag
- Trockeneiszuschlag
- Gefahrgutzuschlag
- Expressversand

SZABO-SCANDIC HandelsgmbH

Quellenstraße 110, A-1100 Wien

T. +43(0)1 489 3961-0

F. +43(0)1 489 3961-7

mail@szabo-scandic.com

www.szabo-scandic.com

[linkedin.com/company/szaboscandic](https://www.linkedin.com/company/szaboscandic) 

KIF14 Antibody

Rabbit Polyclonal

Antigen Affinity Purified	RefSeq ID	NP_055690.1
Catalog No. A300-232A-T	Uniprot ID	Q15058
Lot No. 1	GeneID	9928

APPLICATIONS WB, IP

SPECIES REACTIVITY Human

AMOUNT 10 µl

CONCENTRATION 1000 µg/ml

STORAGE/SHELF LIFE 2 – 8°C / 1 year from date of receipt

PHYSICAL STATE Liquid

BUFFER Tris-citrate/phosphate buffer, pH 7 to 8 containing 0.09% Sodium Azide

ISOTYPE IgG

ORIGIN USA

PRODUCTION PROCEDURES Antibody was affinity purified using an epitope specific to KIF14 immobilized on solid support.

The epitope recognized by A300-232A maps to a region between residues 50 and 100 of human Kinesin Family Member 14 using the numbering given in entry NP_055690.1 (GeneID 9928).

Immunoglobulin concentration was determined using Beer's Law where 1 mg/mL IgG has an A280 of 1.4.

APPLICATIONS Centrifuge tube to remove product from lid. Optimal working dilutions should be determined experimentally by the investigator. Prepare working dilution immediately before use.

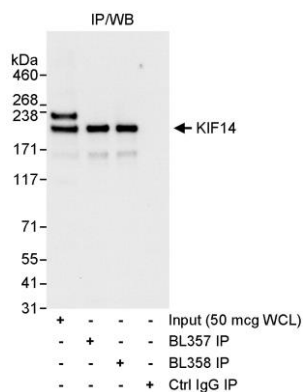
Western Blot 1:2000 – 1:10,000

Immunoprecipitation 6 µg/mg lysate

ADDITIONAL INFO <https://www.fortislife.com/p/A300-232A-T>

Use the link above to view SDS, a current list of citations, and other product specific information.

This document certifies that this product has met all of the quality control standards defined by Bethyl Laboratories, Inc.
Michael Spencer, PhD Date: January 31, 2024



Detection of human KIF14 by western blot and immunoprecipitation. *Samples:* Whole cell lysate (WCL; 50 µg for input; 1 mg/IP, 20% of IP loaded) from HeLa cells. *Antibodies:* Affinity purified rabbit anti-KIF14 antibodies BL357 (Cat. No. A300-232A) used for WB at 1 µg/ml and used for IP at 3 µg/mg lysate. KIF14 was also immunoprecipitated using rabbit anti-KIF14 antibody BL358 (Cat. No. A300-233A). *Detection:* Chemiluminescence with an exposure time of 10 seconds.