



# SZABO SCANDIC

Part of Europa Biosite

## Produktinformation



Forschungsprodukte & Biochemikalien



Zellkultur & Verbrauchsmaterial



Diagnostik & molekulare Diagnostik



Laborgeräte & Service

Weitere Information auf den folgenden Seiten!  
See the following pages for more information!



### Lieferung & Zahlungsart

siehe unsere [Liefer- und Versandbedingungen](#)

### Zuschläge

- Mindermengenzuschlag
- Trockeneiszuschlag
- Gefahrgutzuschlag
- Expressversand

### SZABO-SCANDIC HandelsgmbH

Quellenstraße 110, A-1100 Wien

T. +43(0)1 489 3961-0

F. +43(0)1 489 3961-7

[mail@szabo-scandic.com](mailto:mail@szabo-scandic.com)

[www.szabo-scandic.com](http://www.szabo-scandic.com)

[linkedin.com/company/szaboscandic](https://www.linkedin.com/company/szaboscandic) 

# Phospho RPA32 (S33) Antibody

Rabbit Polyclonal

Antigen Affinity Purified	RefSeq ID	NP_002937.1
Catalog No. A300-246A-T	Uniprot ID	P15927
Lot No. A300-246A-T-12	GeneID	6118

---

<b>APPLICATIONS</b>	WB
<b>SPECIES REACTIVITY</b>	Human
<b>PRESUMED REACTIVITY</b>	Based on 100% sequence identity, this antibody is predicted to react with Orangutan
<b>AMOUNT</b>	10 µl
<b>CONCENTRATION</b>	1000 µg/ml
<b>STORAGE/SHELF LIFE</b>	2 – 8°C / 1 year from date of receipt
<b>PHYSICAL STATE</b>	Liquid
<b>BUFFER</b>	Tris-citrate/phosphate buffer, pH 7 to 8 containing 0.09% Sodium Azide
<b>ISOTYPE</b>	IgG
<b>ORIGIN</b>	USA

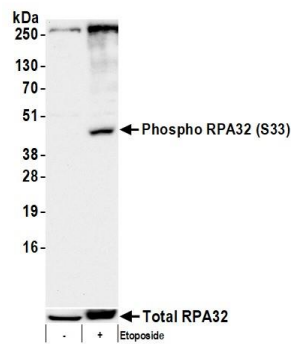
<b>PRODUCTION PROCEDURES</b>	Antibody was affinity purified using the peptide immobilized on solid support. Immunogen was a phosphorylated synthetic peptide, which represented a portion of human replication protein A2, 32 kDa surrounding phosphorylated serine that corresponded to position 33 using the numbering given in entry NP_002937.1 (GeneID 6118).
------------------------------	---

<b>APPLICATIONS</b>	Centrifuge tube to remove product from lid. Optimal working dilutions should be determined experimentally by the investigator. Prepare working dilution immediately before use.
---------------------	---

Western Blot	1:10,000 – 1:25,000. Numerous bands representing proteins that migrate more slowly than 60 to 70 kDA have been observed during WB. Under some conditions, at least two of these may be more intense than the band that represents phospho RPA32-S33.
--------------	--

<b>ADDITIONAL INFO</b>	<a href="https://www.fortislife.com/p/A300-246A-T">https://www.fortislife.com/p/A300-246A-T</a> Use the link above to view SDS, a current list of citations, and other product specific information.
------------------------	---

This document certifies that this product has met all of the quality control standards defined by Bethyl Laboratories, Inc.  
Michael Spencer, PhD Date: March 1, 2023



**Detection of human Phospho RPA32 (S33) by western blot.** *Samples:* Whole cell lysate (50  $\mu$ g) from HeLa cells treated with 100uM Etoposide for 16 hours (+) or mock treated (-). *Antibody:* Affinity purified rabbit anti-Phospho RPA32 (S33) antibody (A300-246A lot 12) used for WB at 0.1  $\mu$ g/ml. *Detection:* Chemiluminescence with an exposure time of 30 seconds. Lower Panel: Rabbit anti-RPA32 antibody (A300-244A).