



# SZABO SCANDIC

Part of Europa Biosite

## Produktinformation



Forschungsprodukte & Biochemikalien



Zellkultur & Verbrauchsmaterial



Diagnostik & molekulare Diagnostik



Laborgeräte & Service

Weitere Information auf den folgenden Seiten!  
See the following pages for more information!



### Lieferung & Zahlungsart

siehe unsere [Liefer- und Versandbedingungen](#)

### Zuschläge

- Mindermengenzuschlag
- Trockeneiszuschlag
- Gefahrgutzuschlag
- Expressversand

### SZABO-SCANDIC HandelsgmbH

Quellenstraße 110, A-1100 Wien

T. +43(0)1 489 3961-0

F. +43(0)1 489 3961-7

[mail@szabo-scandic.com](mailto:mail@szabo-scandic.com)

[www.szabo-scandic.com](http://www.szabo-scandic.com)

[linkedin.com/company/szaboscandic](https://www.linkedin.com/company/szaboscandic) 

# PLK1 Antibody

Rabbit Polyclonal

Antigen Affinity Purified Protein ID P53350

Catalog No. A300-250A-T GeneID 5347

Lot No. A300-250A-T-2



|                              |                                                                                                                                                                                                                                                                                  |
|------------------------------|----------------------------------------------------------------------------------------------------------------------------------------------------------------------------------------------------------------------------------------------------------------------------------|
| <b>APPLICATIONS</b>          | WB, IP                                                                                                                                                                                                                                                                           |
| <b>SPECIES REACTIVITY</b>    | Human                                                                                                                                                                                                                                                                            |
| <b>PRESUMED REACTIVITY</b>   | Based on 100% sequence identity, this antibody is predicted to react with Mouse                                                                                                                                                                                                  |
| <b>AMOUNT</b>                | 20 µl (2 blots)                                                                                                                                                                                                                                                                  |
| <b>CONCENTRATION</b>         | 40 µg/ml                                                                                                                                                                                                                                                                         |
| <b>STORAGE/SHELF LIFE</b>    | 2 - 8° C / 1 year from date of receipt                                                                                                                                                                                                                                           |
| <b>PHYSICAL STATE</b>        | Liquid                                                                                                                                                                                                                                                                           |
| <b>BUFFER</b>                | Tris-buffered Saline containing 0.1% BSA and 0.09% Sodium Azide                                                                                                                                                                                                                  |
| <b>ISOTYPE</b>               | IgG                                                                                                                                                                                                                                                                              |
| <b>ORIGIN</b>                | USA                                                                                                                                                                                                                                                                              |
| <b>PRODUCTION PROCEDURES</b> | Antibodies were affinity purified using epitopes specific to PLK1 immobilized on solid support. The epitopes recognized by A300-250A-T maps to a region between residues 1 and 50 of human Polo-like kinase 1 using the numbering given in SwissProt entry P53350 (GeneID 5347). |

Immunoglobulin concentration was determined by extinction coefficient: absorbance at 280 nm of 1.4 equals 1.0 mg of IgG.

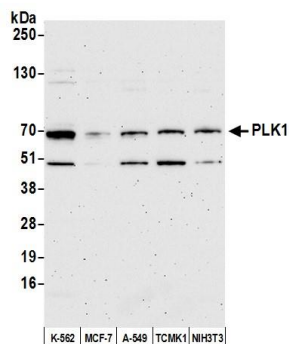
|                     |                                                                                                                                                                                                   |
|---------------------|---------------------------------------------------------------------------------------------------------------------------------------------------------------------------------------------------|
| <b>APPLICATIONS</b> | Centrifuge tube to remove product from lid. Optimal working dilutions should be determined experimentally by the investigator. Prepare working dilution immediately before use.                   |
| Western Blot        | 1:1000                                                                                                                                                                                            |
| Immunoprecipitation | The antibody contained within A300-250A-T has been qualified for use in immunoprecipitation; however, we recommend using the alternative formulation of this antibody found as product A300-250A. |

**APPLICATION NOTES** Western blot of immunoprecipitates performed using Normal Pig Serum (Cat. No. S100-020), Goat anti-Rabbit Light Chain HRP Conjugate (Cat. No. A120-113P) and 4-8% SDS-PAGE (link to IP-western blot protocol in Additional Info section below).

Western blot of lysates performed using standard western blot reagents and 4-8% SDS-PAGE.

**ADDITIONAL INFO** <https://www.bethyl.com/product/A300-250A-T>  
Use the link above to view SDS, a current list of citations, and other product specific information.  
IP-western blot protocol: [https://www.bethyl.com/content/protocol\\_IP\\_WB](https://www.bethyl.com/content/protocol_IP_WB)

This document certifies that this product has met all of the quality control standards defined by Bethyl Laboratories, Inc.  
Eric McIntush, PhD | Chief Scientific Officer Date: June 21, 2019

**Detection of human and mouse PLK1 by western blot.**

*Samples:* Whole cell lysate (10 µg) from K-562, MCF-7, A-549, TCMK-1, and NIH 3T3 cells prepared using NETN lysis buffer. *Antibody:* Affinity purified rabbit anti-PLK1 antibody A300-250A-T (lot A300-250A-T-2) used for WB at 1:1000. *Detection:* Chemiluminescence with an exposure time of 3 minutes.