



# SZABO SCANDIC

Part of Europa Biosite

## Produktinformation



Forschungsprodukte & Biochemikalien



Zellkultur & Verbrauchsmaterial



Diagnostik & molekulare Diagnostik



Laborgeräte & Service

Weitere Information auf den folgenden Seiten!  
See the following pages for more information!



### Lieferung & Zahlungsart

siehe unsere [Liefer- und Versandbedingungen](#)

### Zuschläge

- Mindermengenzuschlag
- Trockeneiszuschlag
- Gefahrgutzuschlag
- Expressversand

### SZABO-SCANDIC HandelsgmbH

Quellenstraße 110, A-1100 Wien

T. +43(0)1 489 3961-0

F. +43(0)1 489 3961-7

[mail@szabo-scandic.com](mailto:mail@szabo-scandic.com)

[www.szabo-scandic.com](http://www.szabo-scandic.com)

[linkedin.com/company/szaboscandic](https://www.linkedin.com/company/szaboscandic)

# EMSY Antibody

Rabbit Polyclonal

Antigen Affinity Purified

Protein ID Q8TE50

Catalog No. A300-253A

GeneID 56946

Lot No. A300-253A-3



<b>APPLICATIONS</b>	WB, IP, IHC
<b>SPECIES REACTIVITY</b>	Human
<b>AMOUNT</b>	100 µl
<b>CONCENTRATION</b>	1000 µg/ml
<b>STORAGE/SHELF LIFE</b>	2 – 8° C / 1 year from date of receipt
<b>PHYSICAL STATE</b>	Liquid
<b>BUFFER</b>	Tris-citrate/phosphate buffer, pH 7 to 8 containing 0.09% Sodium Azide
<b>ISOTYPE</b>	IgG
<b>ORIGIN</b>	USA
<b>PRODUCTION PROCEDURES</b>	Antibody was affinity purified using an epitope specific to EMSY immobilized on solid support.

The epitope recognized by A300-253A maps to a region between residue 1250 and the C-terminus (residue 1322) of human EMSY chromosome 11 open reading frame 30 using the numbering given in TrEMBL entry Q8TE50 (GeneID 56946).

Immunoglobulin concentration was determined by extinction coefficient: absorbance at 280 nm of 1.4 equals 1.0 mg of IgG.

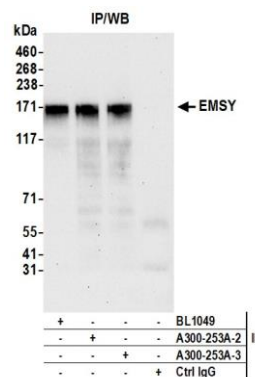
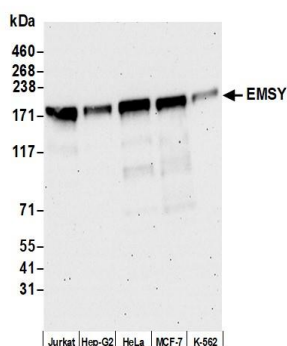
**APPLICATIONS** Centrifuge tube to remove product from lid. Optimal working dilutions should be determined experimentally by the investigator. Prepare working dilution immediately before use.

Western Blot	1:2,000 – 1:10,000
Immunoprecipitation	2 – 10 µg/mg lysate
Immunohistochemistry	1:500 – 1:2,000. Epitope retrieval with Tris-EDTA pH 9.0 is recommended for FFPE tissue sections.

**IHC HUMAN CONTROLS** Breast Carcinoma, Prostate Carcinoma, Stomach Adenocarcinoma

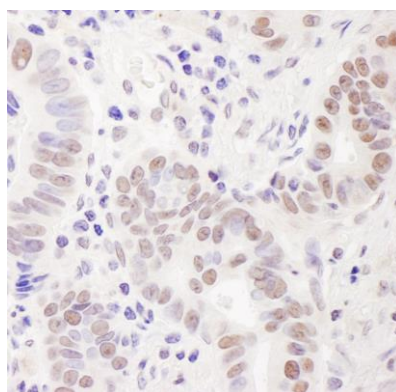
**ADDITIONAL INFO** <https://www.bethyl.com/product/A300-253A>  
Use the link above to view SDS, a current list of citations, and other product specific information.  
IP-western blot protocol: [https://www.bethyl.com/content/protocol\\_IP\\_WB](https://www.bethyl.com/content/protocol_IP_WB)

This document certifies that this product has met all of the quality control standards defined by Bethyl Laboratories, Inc.  
Brian McWilliams, PhD Date: July 28, 2021



**Detection of human EMSY by western blot. Samples:** Whole cell lysate (50 µg) from BeWo, AlphaTC1 Clone 9, A20, 3T3-L1, and cells. **Antibody:** Affinity purified rabbit anti-EMSY antibody EMSY (A300-253A lot 3) used for WB at 0.1 µg/ml. **Detection:** Chemiluminescence with an exposure time of 30 seconds.

**Detection of human EMSY by western blot of immunoprecipitates. Samples:** Whole cell lysate (1.0 mg per IP reaction; 5% of IP loaded) from Jurkat cells prepared using NETN lysis buffer. **Antibodies:** Affinity purified rabbit anti-EMSY antibody (A300-253A lot 3) used for IP at 6 µg per reaction. EMSY was also immunoprecipitated by a previous lot of this antibody (A300-253A lot 2) and another antibody against a different epitope of EMSY (BL1049). For blotting immunoprecipitated EMSY, A300-253A was used at 0.1 µg/ml. **Detection:** Chemiluminescence with an exposure time of 30 seconds.



**Detection of human EMSY by immunohistochemistry.**  
**Sample:** FFPE section of human stomach carcinoma.  
**Antibody:** Affinity purified rabbit anti-EMSY (Cat. No. A300-253A Lot2) used at a dilution of 1:1,000 (1 µg/ml).  
**Detection:** DAB