



SZABO SCANDIC

Part of Europa Biosite

Produktinformation



Forschungsprodukte & Biochemikalien



Zellkultur & Verbrauchsmaterial



Diagnostik & molekulare Diagnostik



Laborgeräte & Service

Weitere Information auf den folgenden Seiten!
See the following pages for more information!



Lieferung & Zahlungsart

siehe unsere [Liefer- und Versandbedingungen](#)

Zuschläge

- Mindermengenzuschlag
- Trockeneiszuschlag
- Gefahrgutzuschlag
- Expressversand

SZABO-SCANDIC HandelsgmbH

Quellenstraße 110, A-1100 Wien

T. +43(0)1 489 3961-0

F. +43(0)1 489 3961-7

mail@szabo-scandic.com

www.szabo-scandic.com

[linkedin.com/company/szaboscandic](https://www.linkedin.com/company/szaboscandic) 

BARD1 Antibody

Rabbit Polyclonal

Antigen Affinity Purified

Protein ID NP_000456.1

Catalog No. A300-263A-T

GeneID 580

Lot No. A300-263A-T-4



APPLICATIONS	WB, IP
SPECIES REACTIVITY	Human
AMOUNT	10 µl
CONCENTRATION	1000 µg/ml
STORAGE/SHELF LIFE	2 – 8° C / 1 year from date of receipt
PHYSICAL STATE	Liquid
BUFFER	Tris-citrate/phosphate buffer, pH 7 to 8 containing 0.09% Sodium Azide
ISOTYPE	IgG
ORIGIN	USA
PRODUCTION PROCEDURES	Antibody was affinity purified using an epitope specific to BARD1 immobilized on solid support.

The epitope recognized by A300-263A-T maps to a region between residues 250 and 300 of human BRCA1-associated RING Domain 1 using the numbering given in entry NP_000456.1 (GeneID 580).

Immunoglobulin concentration was determined by extinction coefficient: absorbance at 280 nm of 1.4 equals 1.0 mg of IgG.

APPLICATIONS Centrifuge tube to remove product from lid. Optimal working dilutions should be determined experimentally by the investigator. Prepare working dilution immediately before use.

Western Blot 1:500 – 1:2,500

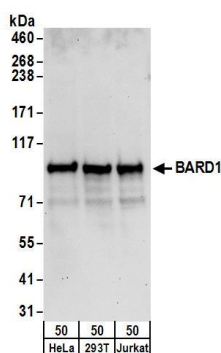
Immunoprecipitation The antibody contained within A300-263A-T has been qualified for use in immunoprecipitation; however, we recommend using the alternative formulation of this antibody found as product A300-263A.

ADDITIONAL INFO <https://www.bethyl.com/product/A300-263A-T>

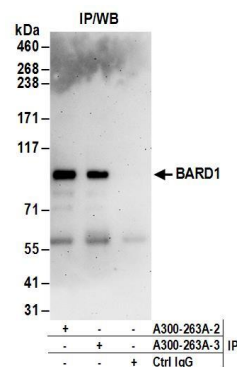
Use the link above to view SDS, a current list of citations, and other product specific information.

IP-western blot protocol: https://www.bethyl.com/content/protocol_IP_WB

This document certifies that this product has met all of the quality control standards defined by Bethyl Laboratories, Inc.
Eric McIntush, PhD | Chief Scientific Officer Date: March 25, 2020



Detection of human BARD1 by western blot. *Samples:* Whole cell lysate (10 μ g) from Jurkat, Hep-G2, K-562, MCF-7, and A-549 cells prepared using NETN lysis buffer. *Antibody:* Affinity purified rabbit anti-BARD1 antibody A300-263A-T (A300-263A-T lot 4) used for WB at 0.04 μ g/ml. *Detection:* Chemiluminescence with an exposure time of 30 seconds.



Detection of human BARD1 by western blot of immunoprecipitates. *Samples:* Whole cell lysate (1.0 mg per IP reaction; 20% of IP loaded) from MCF-7 cells prepared using NETN lysis buffer. *Antibodies:* Affinity purified rabbit anti-BARD1 antibody A300-263A-T (A300-263A-T lot 4) used for IP at 6 μ g per reaction. BARD1 was also immunoprecipitated by a previous lot of this antibody (A300-263A lot 3). For blotting immunoprecipitated BARD1, A300-263A-T was used at 0.04 μ g/ml. *Detection:* Chemiluminescence with an exposure time of 10 seconds.