



SZABO SCANDIC

Part of Europa Biosite

Produktinformation



Forschungsprodukte & Biochemikalien



Zellkultur & Verbrauchsmaterial



Diagnostik & molekulare Diagnostik



Laborgeräte & Service

Weitere Information auf den folgenden Seiten!
See the following pages for more information!



Lieferung & Zahlungsart

siehe unsere [Liefer- und Versandbedingungen](#)

Zuschläge

- Mindermengenzuschlag
- Trockeneiszuschlag
- Gefahrgutzuschlag
- Expressversand

SZABO-SCANDIC HandelsgmbH

Quellenstraße 110, A-1100 Wien

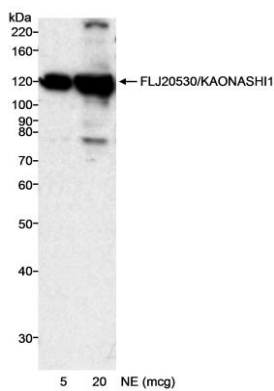
T. +43(0)1 489 3961-0

F. +43(0)1 489 3961-7

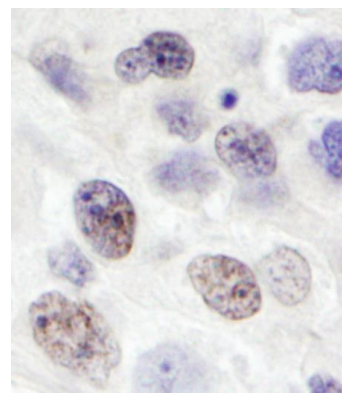
mail@szabo-scandic.com

www.szabo-scandic.com

[linkedin.com/company/szaboscandic](https://www.linkedin.com/company/szaboscandic) 



Detection of human FLJ20530/KAONASHI1 by western blot. *Samples:* Nuclear extract (NE) from HeLa cells. *Antibody:* Affinity purified rabbit anti-FLJ20530/KAONASHI1 antibody (Cat. No. A300-269A-T) used at 0.2 $\mu\text{g}/\text{ml}$. *Detection:* Chemiluminescence with an exposure time of 20 minutes.



Detection of human FLJ20530/KAONASHI1 by immunohistochemistry. *Sample:* FFPE section of human breast carcinoma. *Antibody:* Affinity purified rabbit anti-FLJ20530/KAONASHI1 (Cat. No. A300-269A-T Lot1) used at a dilution of 1:1,000 (1 $\mu\text{g}/\text{ml}$). *Detection:* DAB