



# SZABO SCANDIC

Part of Europa Biosite

## Produktinformation



Forschungsprodukte & Biochemikalien



Zellkultur & Verbrauchsmaterial



Diagnostik & molekulare Diagnostik



Laborgeräte & Service

Weitere Information auf den folgenden Seiten!  
See the following pages for more information!



### Lieferung & Zahlungsart

siehe unsere [Liefer- und Versandbedingungen](#)

### Zuschläge

- Mindermengenzuschlag
- Trockeneiszuschlag
- Gefahrgutzuschlag
- Expressversand

### SZABO-SCANDIC HandelsgmbH

Quellenstraße 110, A-1100 Wien

T. +43(0)1 489 3961-0

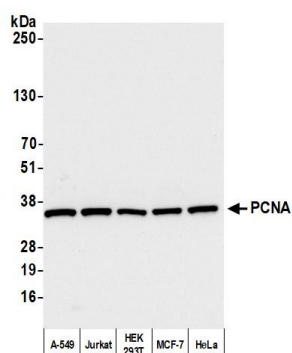
F. +43(0)1 489 3961-7

[mail@szabo-scandic.com](mailto:mail@szabo-scandic.com)

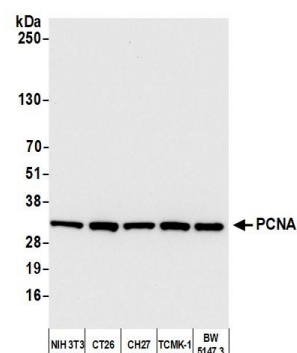
[www.szabo-scandic.com](http://www.szabo-scandic.com)

[linkedin.com/company/szaboscandic](https://www.linkedin.com/company/szaboscandic) 

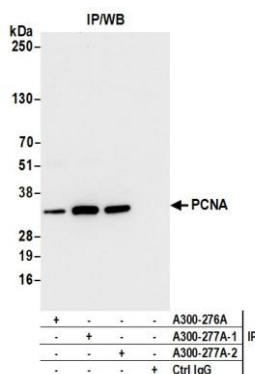




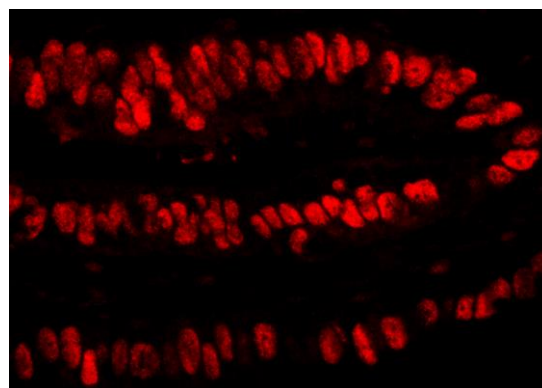
**Detection of human PCNA by western blot.** *Samples:* Whole cell lysate (10  $\mu$ g) from A-549, Jurkat, HEK293T, MCF-7, and HeLa cells prepared using NETN lysis buffer. *Antibody:* Affinity purified rabbit anti-PCNA antibody (A300-277A lot 2) used for WB at 0.1  $\mu$ g/ml. *Detection:* Chemiluminescence with an exposure time of 3 seconds.



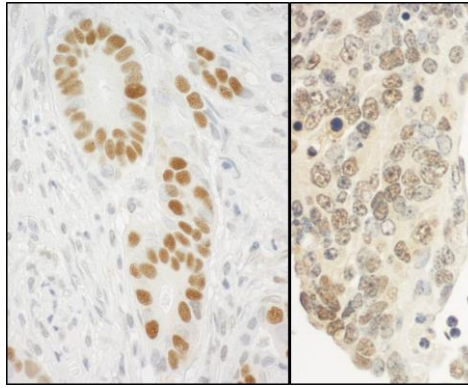
**Detection of mouse PCNA by western blot.** *Samples:* Whole cell lysate (10  $\mu$ g) from NIH 3T3, CT26, CH27, TCMK-1, and BW5147.3 cells prepared using NETN lysis buffer. *Antibody:* Affinity purified rabbit anti-PCNA antibody (A300-277A lot 2) used for WB at 0.1  $\mu$ g/ml. *Detection:* Chemiluminescence with an exposure time of 3 seconds.



**Detection of human PCNA by western blot of immunoprecipitates.** *Samples:* Whole cell lysate (1.0 mg per IP reaction; 5% of IP loaded) from HEK293T cells prepared using NETN lysis buffer. *Antibodies:* Affinity purified rabbit anti-PCNA antibody (A300-277A lot 2) used for IP at 6  $\mu$ g per reaction. PCNA was also immunoprecipitated by a previous lot of this antibody (A300-277A lot 1) and a second antibody against a different epitope of PCNA (A300-276A). For blotting immunoprecipitated PCNA, A300-277A was used at 0.1  $\mu$ g/ml. *Detection:* Chemiluminescence with an exposure time of 3 seconds.



**Detection of human PCNA by immunohistochemistry.** *Sample:* FFPE section of human stomach carcinoma. *Antibody:* Affinity purified rabbit anti-PCNA (Cat. No. A300-277A Lot1) used at a dilution of 1:4,000 (0.25  $\mu$ g/ml). *Detection:* Red-fluorescent goat anti-rabbit IgG-heavy and light chain cross-adsorbed Antibody DyLight® 594 Conjugated used at a dilution of 1:100.



**Detection of human and mouse PCNA by immunohistochemistry.** *Sample:* FFPE section of human stomach carcinoma (left) and mouse teratoma (right). *Antibody:* Affinity purified rabbit anti-PCNA (Cat. No. A300-277A Lot1) used at a dilution of 1:10,000 (0.1 µg/ml). *Detection:* DAB