



SZABO SCANDIC

Part of Europa Biosite

Produktinformation



Forschungsprodukte & Biochemikalien



Zellkultur & Verbrauchsmaterial



Diagnostik & molekulare Diagnostik



Laborgeräte & Service

Weitere Information auf den folgenden Seiten!
See the following pages for more information!



Lieferung & Zahlungsart

siehe unsere [Liefer- und Versandbedingungen](#)

Zuschläge

- Mindermengenzuschlag
- Trockeneiszuschlag
- Gefahrgutzuschlag
- Expressversand

SZABO-SCANDIC HandelsgmbH

Quellenstraße 110, A-1100 Wien

T. +43(0)1 489 3961-0

F. +43(0)1 489 3961-7

mail@szabo-scandic.com

www.szabo-scandic.com

[linkedin.com/company/szaboscandic](https://www.linkedin.com/company/szaboscandic) 

SMAR1 /BANP Antibody

Rabbit Polyclonal

Antigen Affinity Purified	Protein ID	Q96GJ7
Catalog No. A300-279A	GeneID	54971
Lot No. A300-279A-4		

APPLICATIONS	WB, IP, IHC
SPECIES REACTIVITY	Human, Mouse
PRESUMED REACTIVITY	Based on 100% sequence identity, this antibody is predicted to react with Bovine
AMOUNT	100 µl
CONCENTRATION	1000 µg/ml
STORAGE/SHELF LIFE	2 – 8°C / 1 year from date of receipt
PHYSICAL STATE	Liquid
BUFFER	Tris-citrate/phosphate buffer, pH 7 to 8 containing 0.09% Sodium Azide
ISOTYPE	IgG
ORIGIN	USA
PRODUCTION PROCEDURES	Antibody was affinity purified using an epitope specific to SMAR1 /BANP immobilized on solid support.

The epitope recognized by A300-279A maps to a region between residue 425 and the C-terminus (residue 469) of human BTG3 associated nuclear protein using the numbering given in TrEMBL entry Q96GJ7 (GeneID 54971).

Immunoglobulin concentration was determined by extinction coefficient: absorbance at 280 nm of 1.4 equals 1.0 mg of IgG.

APPLICATIONS Centrifuge tube to remove product from lid. Optimal working dilutions should be determined experimentally by the investigator. Prepare working dilution immediately before use.

Western Blot 1:10,000 – 1:25,000

Immunoprecipitation 1:500 – 1:2,500

Immunohistochemistry 1:2,000 – 1:10,000. Epitope retrieval with citrate buffer pH 6.0 is recommended for FFPE tissue sections.

IHC HUMAN CONTROLS Breast Carcinoma, Colon Carcinoma, Ovarian Carcinoma

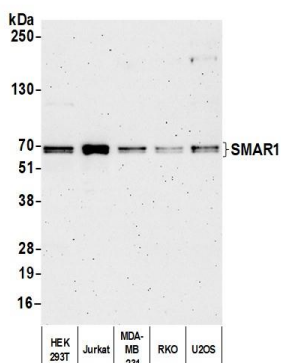
IHC MOUSE CONTROLS Renal Cell Carcinoma, Teratoma

ADDITIONAL INFO <https://www.bethyl.com/product/A300-279A>

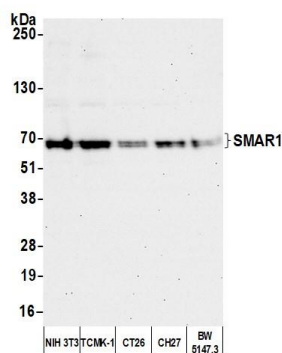
Use the link above to view SDS, a current list of citations, and other product specific information.

IP-western blot protocol: https://www.bethyl.com/content/protocol_IP_WB

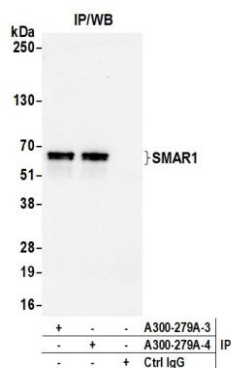
This document certifies that this product has met all of the quality control standards defined by Bethyl Laboratories, Inc.
Michael Spencer, PhD Date: March 18, 2022



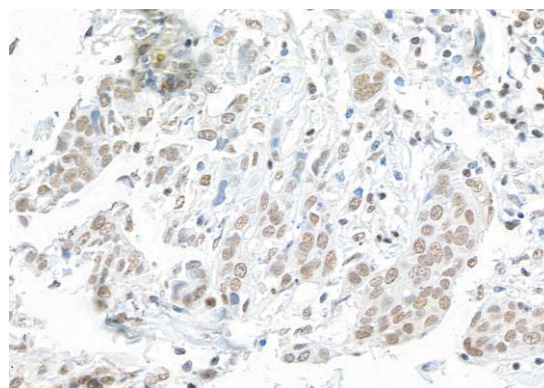
Detection of human SMAR1 by western blot. *Samples:* Whole cell lysate (10 µg) from HEK293T, Jurkat, MDA-MB-231, RKO, and U2OS cells prepared using NETN lysis buffer. *Antibody:* Affinity purified rabbit anti-SMAR1 antibody (A300-279A lot 4) used for WB at 0.1 µg/ml. *Detection:* Chemiluminescence with an exposure time of 3 minutes.



Detection of mouse SMAR1 by western blot. *Samples:* Whole cell lysate (25 µg) from NIH 3T3, TCMK-1, CT26, CH27, and BW5147.3 cells prepared using NETN lysis buffer. *Antibody:* Affinity purified rabbit anti-SMAR1 antibody (A300-279A lot 4) used for WB at 0.1 µg/ml. *Detection:* Chemiluminescence with an exposure time of 30 seconds.



Detection of human SMAR1 by western blot of immunoprecipitates. *Samples:* Whole cell lysate (1.0 mg per IP reaction; 10% of IP loaded) from HEK293T cells prepared using NETN lysis buffer. *Antibodies:* Affinity purified rabbit anti-SMAR1 antibody (A300-279A lot 4) used for IP at 6 µg per reaction. SMAR1 was also immunoprecipitated by a previous lot of this antibody (A300-279A lot 3). For blotting immunoprecipitated SMAR1, A300-279A was used at 0.1 µg/ml. *Detection:* Chemiluminescence with an exposure time of 3 seconds.



Detection of human SMAR1 by immunohistochemistry. *Sample:* FFPE section of human breast carcinoma. *Antibodies:* Affinity purified rabbit anti-SMAR1 (A300-279A Lot 4) used at dilution of 1:5,000 (0.2 µg/ml). *Detection:* DAB