



# SZABO SCANDIC

Part of Europa Biosite

## Produktinformation



Forschungsprodukte & Biochemikalien



Zellkultur & Verbrauchsmaterial



Diagnostik & molekulare Diagnostik



Laborgeräte & Service

Weitere Information auf den folgenden Seiten!  
See the following pages for more information!



### Lieferung & Zahlungsart

siehe unsere [Liefer- und Versandbedingungen](#)

### Zuschläge

- Mindermengenzuschlag
- Trockeneiszuschlag
- Gefahrgutzuschlag
- Expressversand

### SZABO-SCANDIC HandelsgmbH

Quellenstraße 110, A-1100 Wien

T. +43(0)1 489 3961-0

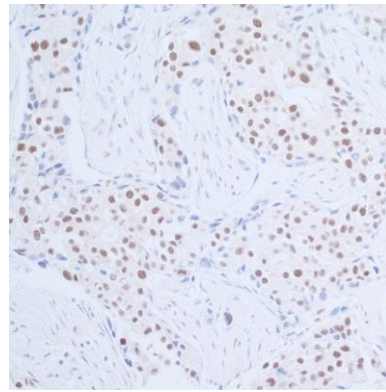
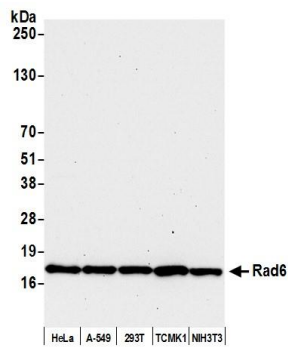
F. +43(0)1 489 3961-7

[mail@szabo-scandic.com](mailto:mail@szabo-scandic.com)

[www.szabo-scandic.com](http://www.szabo-scandic.com)

[linkedin.com/company/szaboscandic](https://www.linkedin.com/company/szaboscandic) 



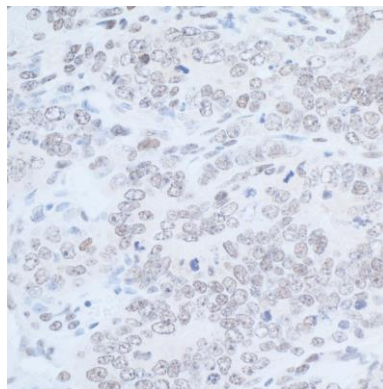


**Detection of human and mouse Rad6 by western blot.**

*Samples:* Whole cell lysate (50 µg) from HeLa, A-549, HEK293T, TCMK-1, and NIH 3T3 cells prepared using NETN lysis buffer. *Antibody:* Affinity purified rabbit anti-Rad6 antibody A300-281A (lot A300-281A-2) used for WB at 0.04 µg/ml. *Detection:* Chemiluminescence with an exposure time of 30 seconds.

**Detection of human Rad6 by immunohistochemistry.**

*Sample:* FFPE section of human lung carcinoma. *Antibody:* Affinity purified rabbit anti-Rad6 (Cat. No. A300-281A lot 2) used at 1:1,000 (1 µg/ml). *Detection:* DAB



**Detection of mouse Rad6 by immunohistochemistry.**

*Sample:* FFPE section of mouse teratoma. *Antibody:* Affinity purified rabbit anti-Rad6 (Cat. No. A300-281A lot 2) used at 1:1,000 (1 µg/ml). *Detection:* DAB